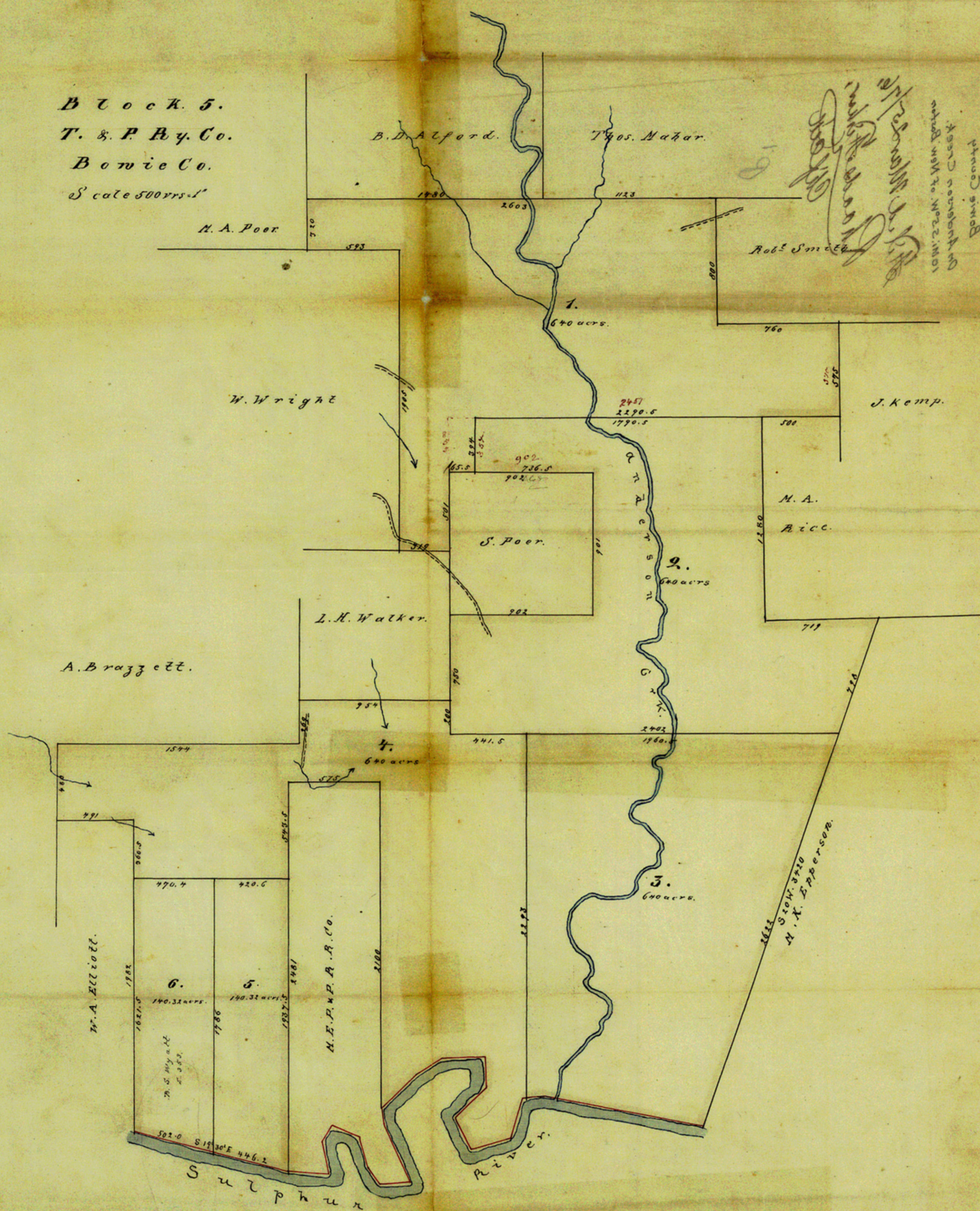


Block 5.
 T. & P. Ry. Co.
 Bowie Co.
 Scale 500rs-1"



Handwritten notes:
 1001.2241.02 New Bond
 On Aqueduct Creek
 Bowie County
 2167.54. 116 No. 5
 2167.54. 116 No. 5
 2167.54. 116 No. 5

0491 # 257000

file 2
Prowie Co

Sketch File No. 2
Bowie County
On Anderson Creek.
10 Mi. S. 5° W. of New Boston

Filed March 25/76
Rhoads Fisher,
Clerk



COUNTER # 78906

Counter # 10440

W. A. A.
Bowie Co.
T. R. F. A. A.
Bowie Co.