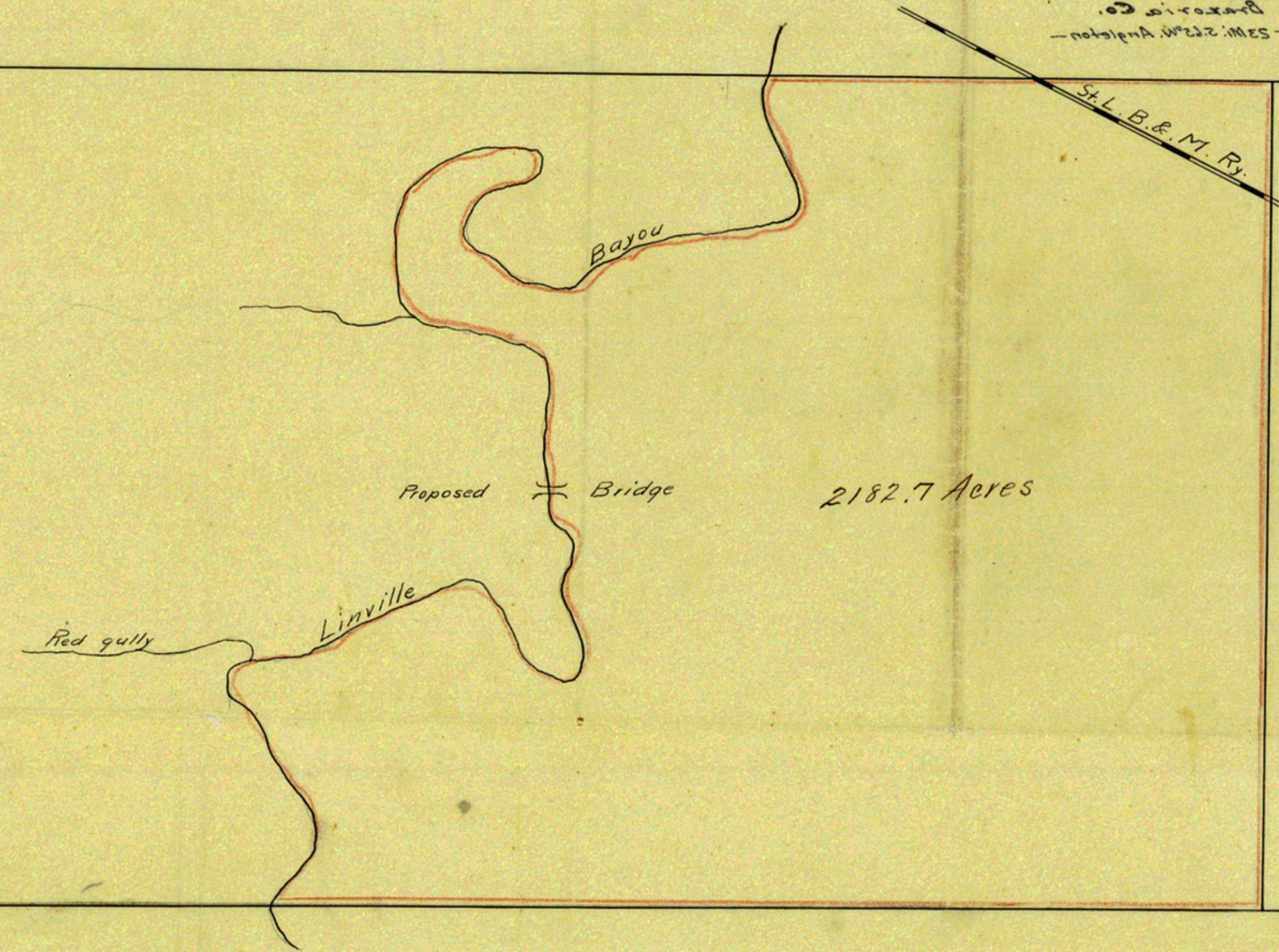


Mr. B. Nuckles League
Plot Part in Brazoria Co.
6-17-10
Sketch File No. 35.
Brazoria Co.
- 23 Mi. 23 1/2 W. Angleton -



PLAT
of
M. B. Nuckles League in Brazoria
County Texas. Surveyed May 24-28, 1910.
J. L. Chambers
County Surveyor.

COUNT# 10828

No. 35.
M. B. Nickles League
That Part in Brazoria Co.
6-17-10 Hunt.

Sketch File No 35.
Brazoria Co.
- 23 Mi. S. 65° W. Angleton -

M. B. & M. R.

9-32

2185.7 Acres

Proposed Bridge

Bayou

Linville

Red Bull

PLAT
of
M. B. Nickles League in Brazoria
County Texas. Surveyed May 24-25, 1910.
J. L. Chambers
County Surveyor.

COUNTER # 78923

Counter # 10228