

Map showing true position of Bks A.1
 G. H. & H. Ry. Co. 364, 316 G. & S. Ry. Co.
 206, 207 & 212 Tex. & St. Louis Ry. Co.
 in Precinct & Brewster County, Tex. as
 Surveyed Jan. 29th & 30th 1914
 Joe Moser County Surveyor Brewster
 County Tex.

variation used 11°50' E
 405 814 218 180 509
 418 257 1041
 405 118 19 2 25 25
 14 114 10 51 9 4 4 4
 125 114 5 5 5 5 5 5
 2 2 2 2 2 2 2 2

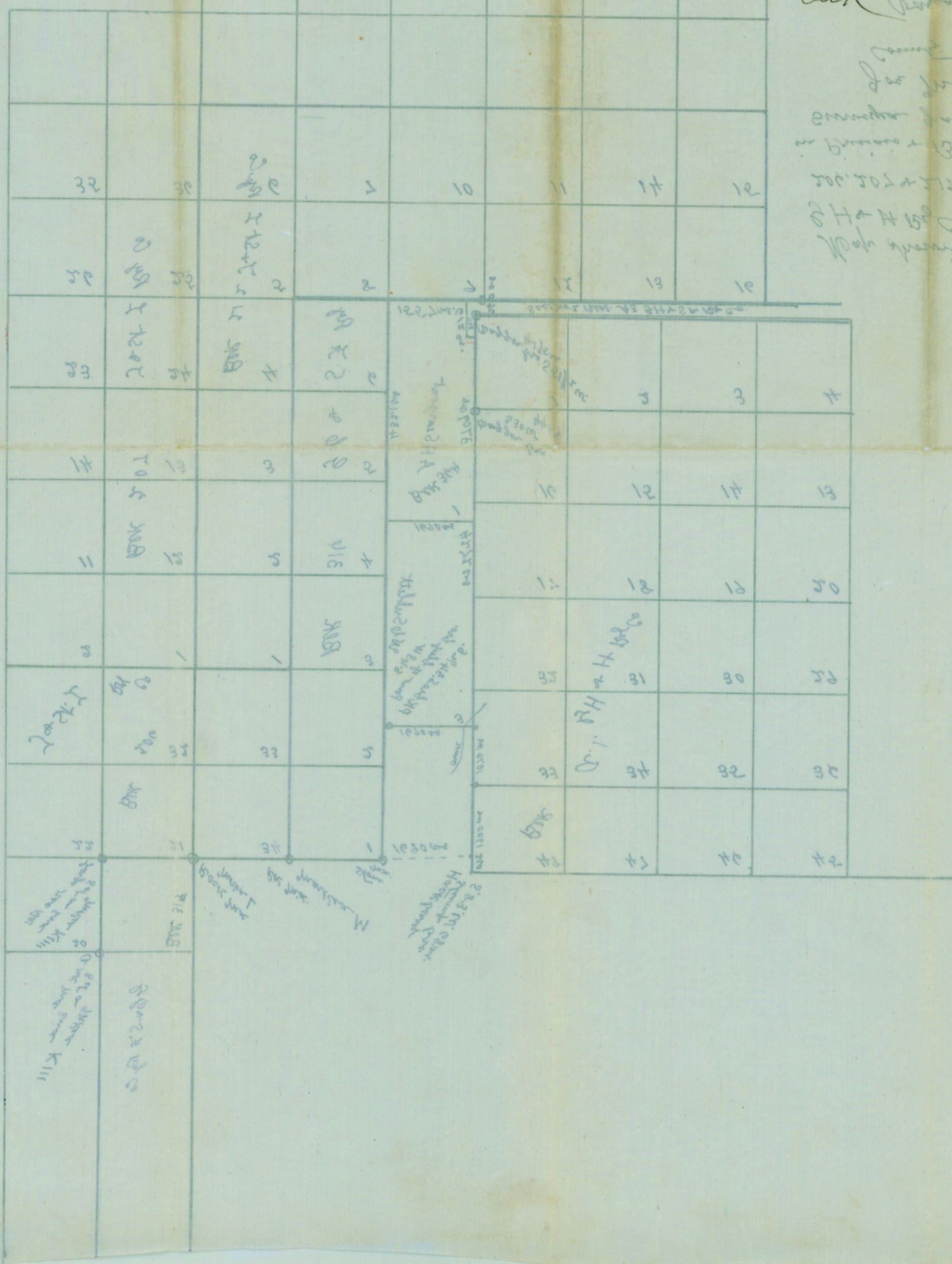
COUNTER# 18936

18901 # 1000

Sketch showing
 connection made by
 Joe Moss, showing
 relative positions of
 H. & L. RR Co. Blk A1
 & West L. Ry Co Blk 206
 in Brewster & Presidio Cos.
 Filed in General Land
 Office Feb 5th - 1914

J. J. Robinson
 Com.
 H. F. McDonald
 Clerk

Sketch File No. N. 9.
 (North) Brewster County
 Joe Moss Sketch
 Blks A1 & 206 - Brewster & Presidio
 Cos.
 Filed Feb 5, 1914
 J. H. Walker, Comm.
 File Clerk
 Descriptive: 35 Mi. S. 10 W. Alpine.
 Shows connections made
 between Blks A1 & 206.
 See Sk. File No. N. 8. for Surveyor's Report.



1.05617
 2.05617
 3.05617
 4.05617
 5.05617
 6.05617
 7.05617
 8.05617
 9.05617
 10.05617
 11.05617
 12.05617
 13.05617
 14.05617
 15.05617
 16.05617
 17.05617
 18.05617
 19.05617
 20.05617
 21.05617
 22.05617
 23.05617
 24.05617
 25.05617
 26.05617
 27.05617
 28.05617
 29.05617
 30.05617
 31.05617
 32.05617
 33.05617
 34.05617
 35.05617
 36.05617
 37.05617
 38.05617
 39.05617
 40.05617
 41.05617
 42.05617
 43.05617
 44.05617
 45.05617
 46.05617
 47.05617
 48.05617
 49.05617
 50.05617
 51.05617
 52.05617
 53.05617
 54.05617
 55.05617
 56.05617
 57.05617
 58.05617
 59.05617
 60.05617
 61.05617
 62.05617
 63.05617
 64.05617
 65.05617
 66.05617
 67.05617
 68.05617
 69.05617
 70.05617
 71.05617
 72.05617
 73.05617
 74.05617
 75.05617
 76.05617
 77.05617
 78.05617
 79.05617
 80.05617
 81.05617
 82.05617
 83.05617
 84.05617
 85.05617
 86.05617
 87.05617
 88.05617
 89.05617
 90.05617
 91.05617
 92.05617
 93.05617
 94.05617
 95.05617
 96.05617
 97.05617
 98.05617
 99.05617
 100.05617