



North

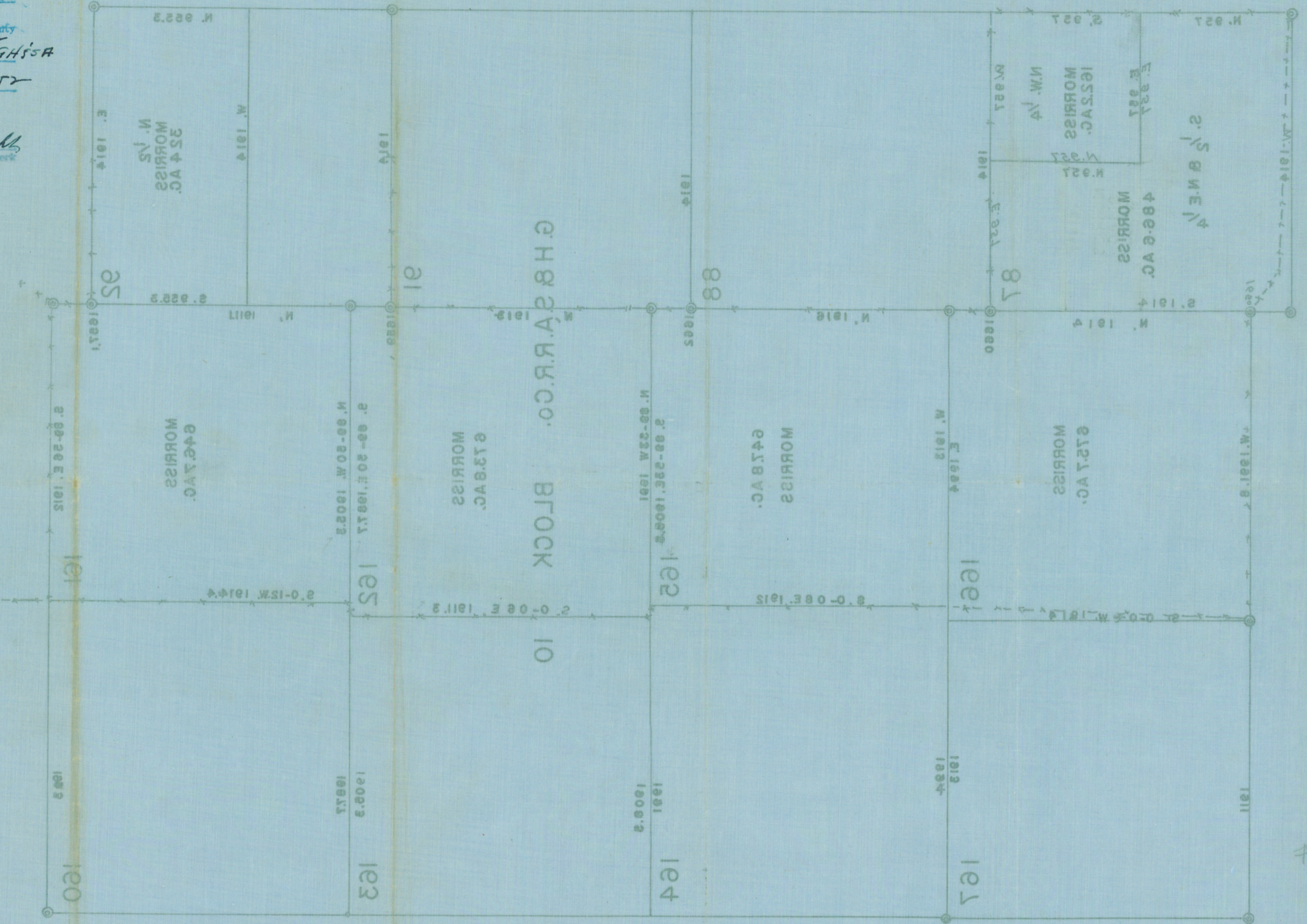
File No. 24

Brewster County  
Sur. 87-92-161-162  
168 and 166-BLK 10-GH's A

Filed 10/27 1912

BASCOM GILES, Com'r

*H. H. Pfeiffer*  
File Clerk



SCALE 1"=200 AS.  
SURVEYED OCT. 18-25-1925.  
BLK. 10 GH&S.A.R.R.CO. BREWSTER CO.  
N.W. 1/4 S. 25 BANE 1/4 185' 100'  
SHOWING SURVEY OF N. 1/2 SEC. 95

COUNTY SURVEYOR  
*H. H. Pfeiffer*

REFERRED TO MAP  
OCT. 29 1925  
RECEIVED

COUNTER# 78943

*10/27*  
*10/27*