

RECORDED
 JUL 22 1957
 GENERAL LAND OFFICE

SKETCH FILE NO. 11-21
 COUNTY Brewster

File No. N. 26

Brewster County

Sec-164, 166, 167, 169-

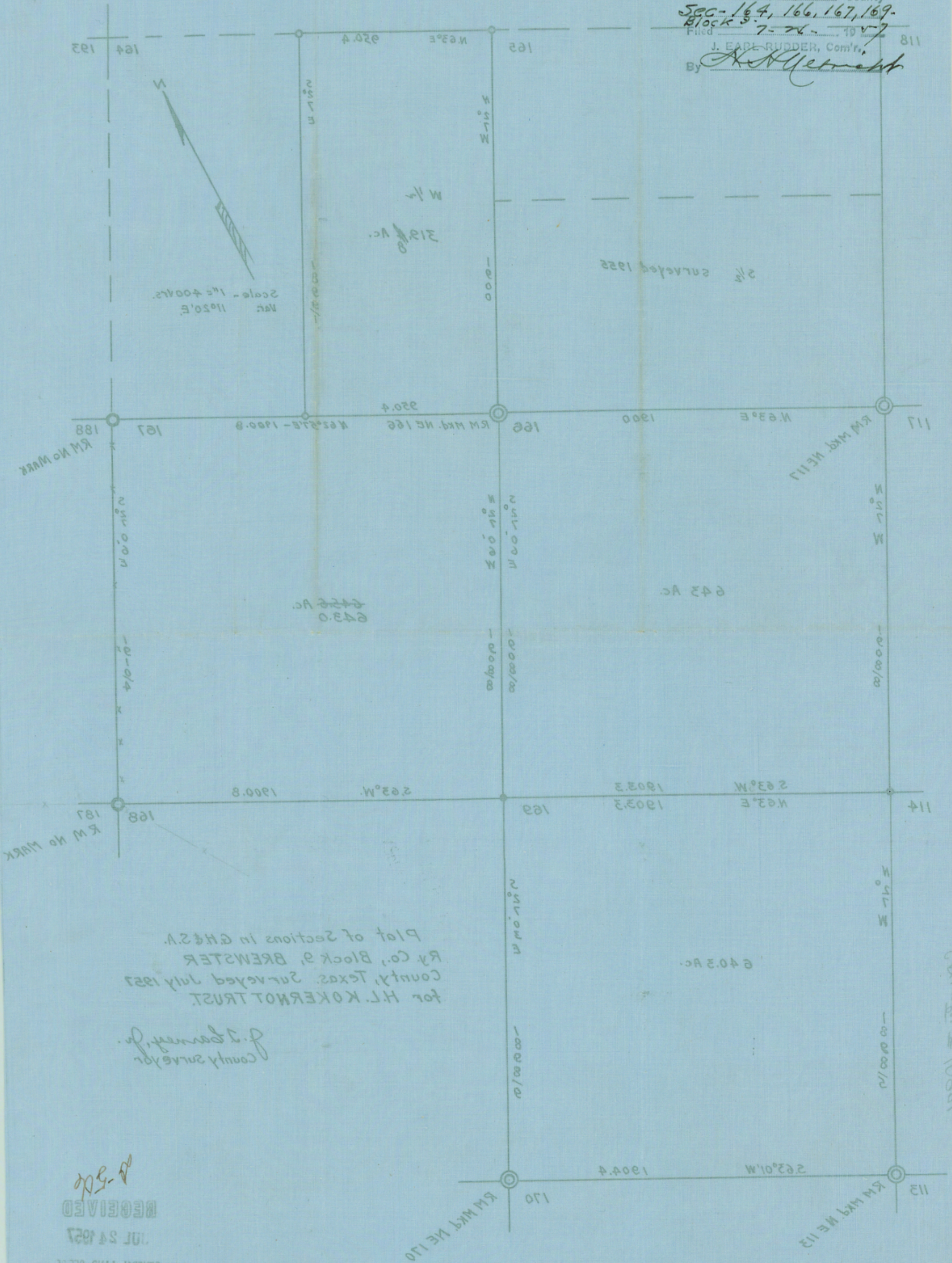
Block 3-7-24

Filed 7-24-19 v-7

J. EARL RUDDER, Com'r.

By A. H. Mett

811



Scale - 1" = 400 ft.
N. 1120' E.

Plot of sections in G.H.S.A.
Ry Co., Block 3, BREWSTER
County, Texas. Surveyed July 1927
for H.L. KOKERNOT TRUST

J. J. Garney, Jr.
County Surveyor

RECEIVED
JUL 24 1927
GENERAL LAND OFFICE

COUNTER # 78944

Counter # 10921