

PLAT  
OF  
RESURVEY  
OF  
BLOCK G-12  
BREWSTER Co. TEXAS.  
MADE September 1910  
from field notes of original  
survey

N  
↑  
W ← E  
North Arrow  
Scale 2000 ft. = 1 in.

Legend  
○ Corners of Resurvey  
⊙ Original Corners

*J. R. Wood, State Surveyor, do hereby certify that  
the above plat is a true & correct plat of the position  
of survey in Block G-12 as found by actual survey on  
the ground made by me Sep. 1910*  
J. R. Wood  
S. Sur.

Sketch "B"

(South)  
Newnan Co  
Block G12, G.C.E.S.F.Ry Co.

Sketch & Surveyors report  
R.S. Dod, state surveyor

Filed July 17<sup>th</sup> 1911 -

H. F. McDonald  
Clerk

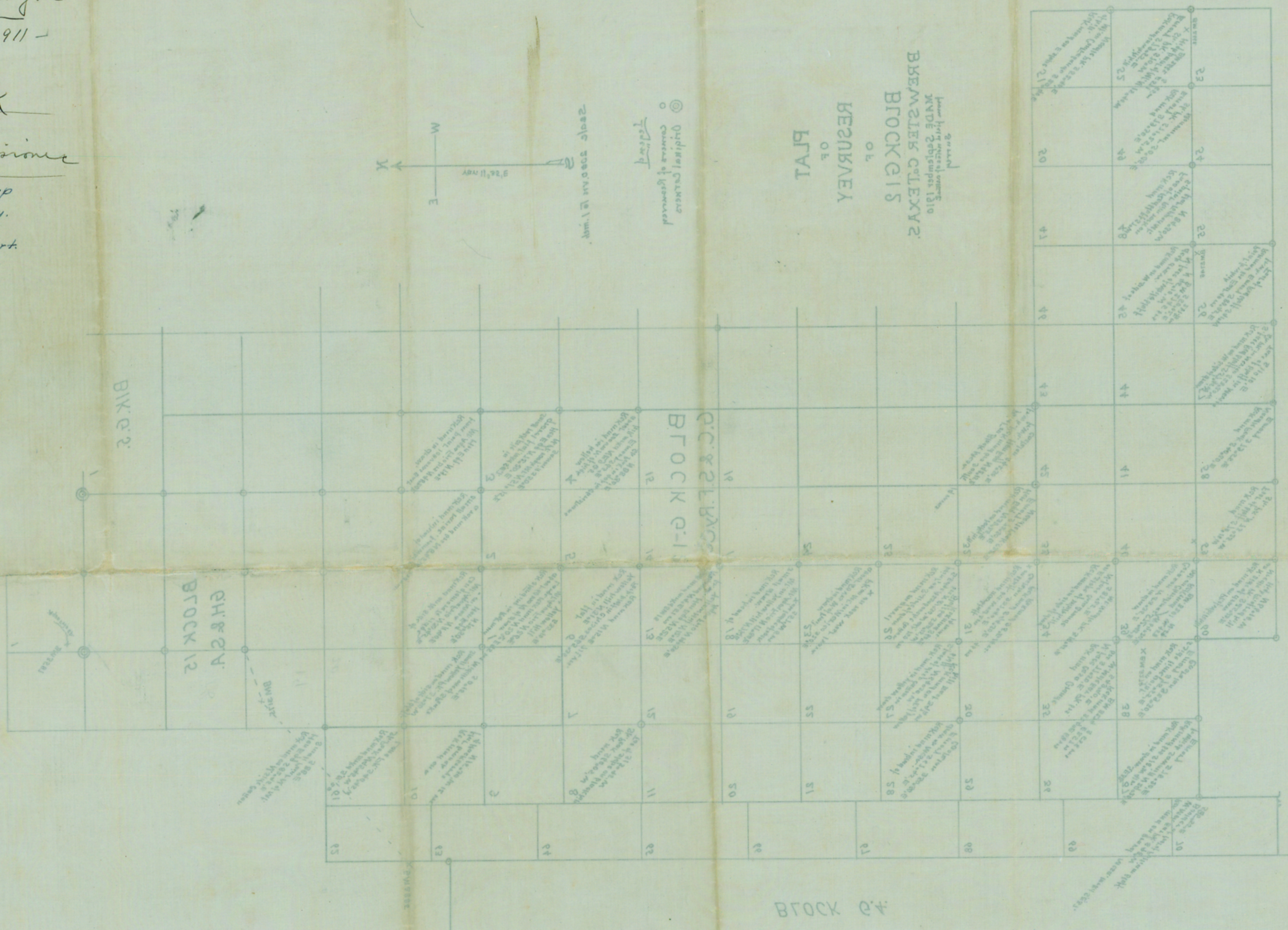
J. J. Robison  
Commissioner

In S.W. Cor. of Map  
of 5 1/2 of County.

See Sta. File B1- for Report.

21001 # 1002

COUNTER # 78948



24

See Sta. File B1- for Report.

J. J. Robison  
Commissioner

H. F. McDonald  
Clerk

R.S. Dod, state surveyor

Sketch & Surveyors report

(South)  
Newnan Co  
Block G12, G.C.E.S.F.Ry Co.

Sketch "B"