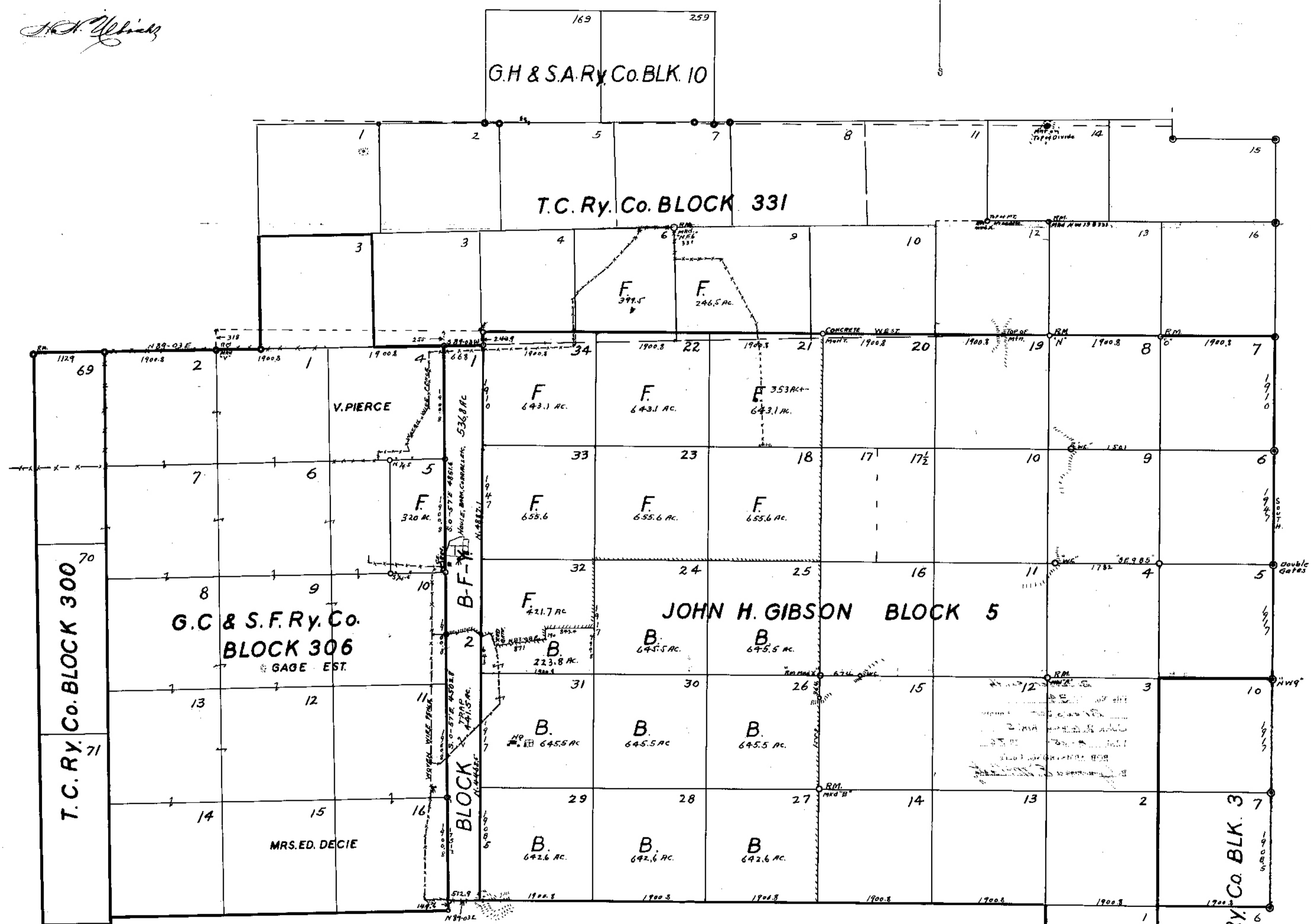
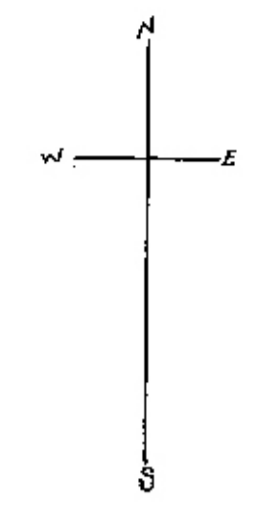


4  
S.F. 14522  
Brewster  
Surveyor's Sketch  
9-3 43

*H.A. Uphoff*



I, H.R. Gard, County Surveyor of Brewster County, Tex., do hereby certify that the foregoing survey was made by me on the ground, and according to law; that the limits, boundaries & corners, with the marks, natural & artificial, are truly described in the foregoing plat & field notes; & that they were filed for record in the Surveyors office on the 20th day of Aug 1943, at 4 o'clock PM, and are recorded in Book C.F.M. 5 Pages 73 & 74.

*H.R. Gard*  
County Surveyor.

PLAT  
SHOWING BILLIE & FAYETTE YATES  
GLASS MOUNTAIN RANCHES  
IN BREWSTER COUNTY TEXAS.  
SURVEYED IN JUNE & JULY 1943.  
SCALE 1" = 1000 VRS.  
VAR. 11' E.  
H.R. GARD  
COUNTY SURVEYOR.

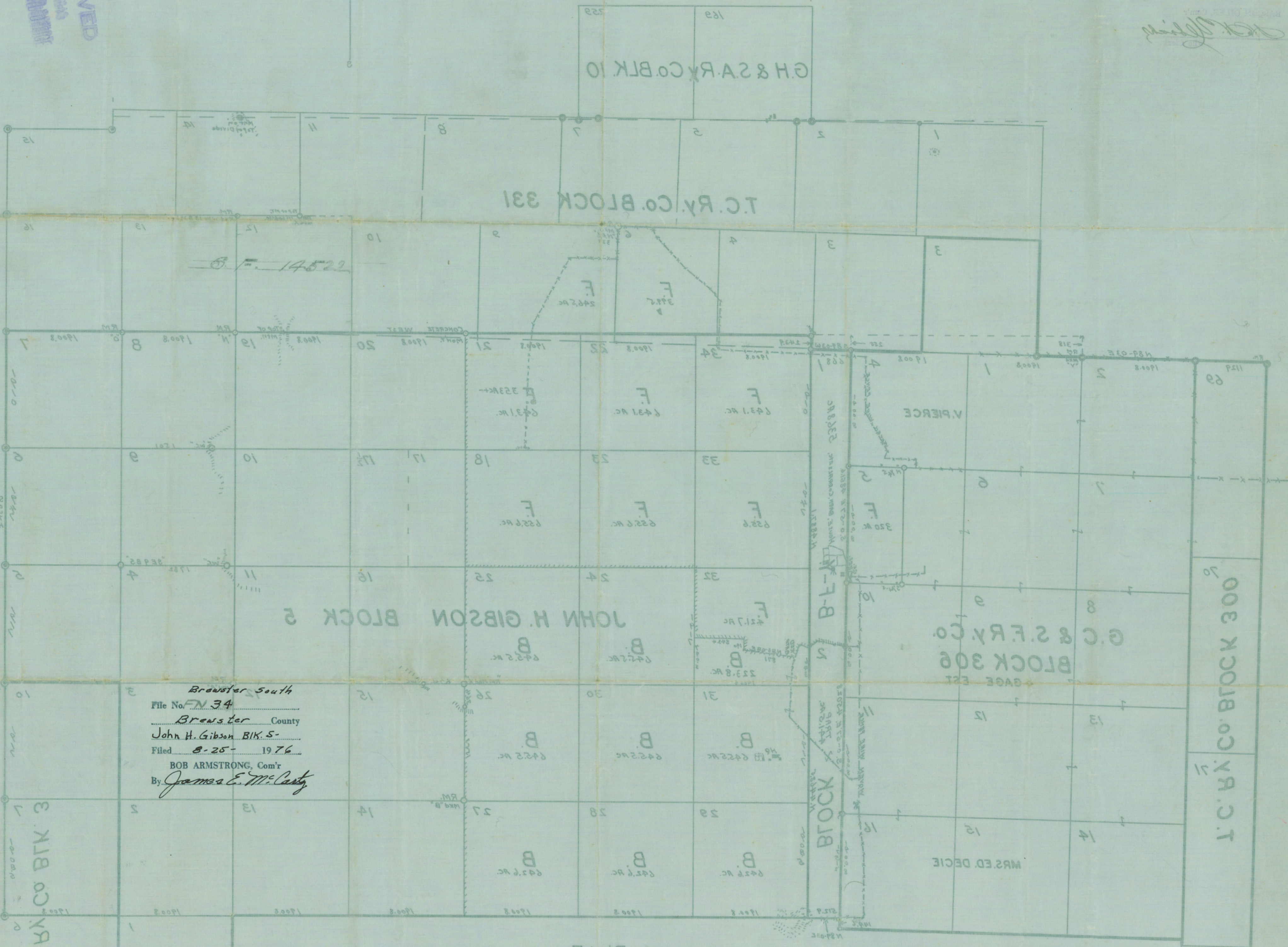
734

RECEIVED  
AUGUST 25 1976  
COUNTY CLERK



Brewster  
Surveyor's Sketch  
P-3  
4  
S.F. 14522

COUNTER # 78962



Brewster South  
File No. FN-34  
Brewster County  
John H. Gibson, B.L.K. 5-  
Filed 8-25-1976  
BOB ARMSTRONG, Com'r  
By James E. McCarty

PLAT  
SHOWING BILLIE & FAYETTE YATES  
GLASS MOUNTAIN RANCHES  
IN BREWSTER COUNTY TEXAS.  
SURVEYED IN JUNE & JULY 1943.  
SCALE 1"=1000 YRS.  
H. R. GARD  
COUNTY SURVEYOR  
MAR 11 E.

I, H. R. GARD, County Surveyor of Brewster County, Texas, do hereby certify that the foregoing survey was made by me on the ground, and according to law; that the lines, boundaries, corners, with the marks, natural & artificial, are truly described in the foregoing plat & field notes; that they were filed for record in the surveyor's office on the 25th day of August 1976 at 4 o'clock P.M. and are recorded in Book C.R.M. & Page 3224.  
H. R. GARD  
County Surveyor

Brewster Co. Sk. File # FN-34