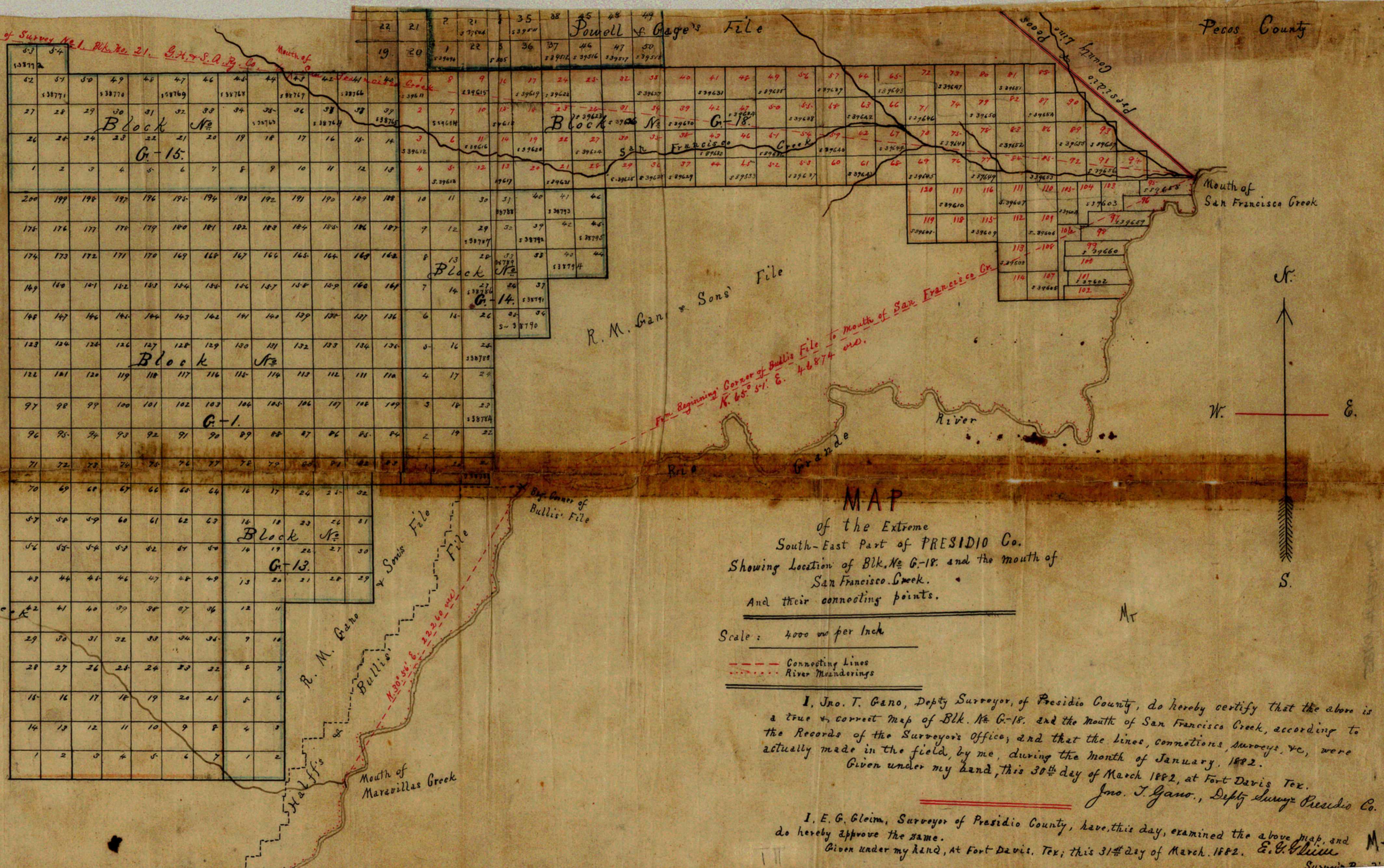


Patent File No. 118040
 From N.W. Corner of Survey No. 1, Blk. No. 21, G.H. & S.A. Ry. Co.
 S. 82° 41' E. 118040 and
 T. & St. L. Ry. Co.
 58/Pl 118040
 J. H. Walker, Comm.
 Filed
 1882

T. & St. L.
 Ry. Co.
 58/Pl 118040
 J. H. Walker, Comm.
 Filed
 1882



MAP
 of the Extreme
 South-East Part of PRESIDIO Co.
 Showing Location of Blk. No. G-18 and the mouth of
 San Francisco Creek.
 And their connecting points.

Scale: 4000 feet per Inch

--- Connecting Lines
 - - - River Meanderings

I, Jno. T. Gano, Depty Surveyor, of Presidio County, do hereby certify that the above is a true & correct map of Blk. No. G-18, and the mouth of San Francisco Creek, according to the Records of the Surveyor's Office, and that the lines, connections, surveys, &c, were actually made in the field, by me, during the month of January, 1882.
 Given under my hand, this 30th day of March 1882, at Fort Davis Tex.
 Jno. T. Gano., Depty Surveyor Presidio Co.

I, E. G. Gleim, Surveyor of Presidio County, have, this day, examined the above map, and do hereby approve the same.
 Given under my hand, At Fort Davis, Tex; this 31st day of March, 1882. E. G. Gleim

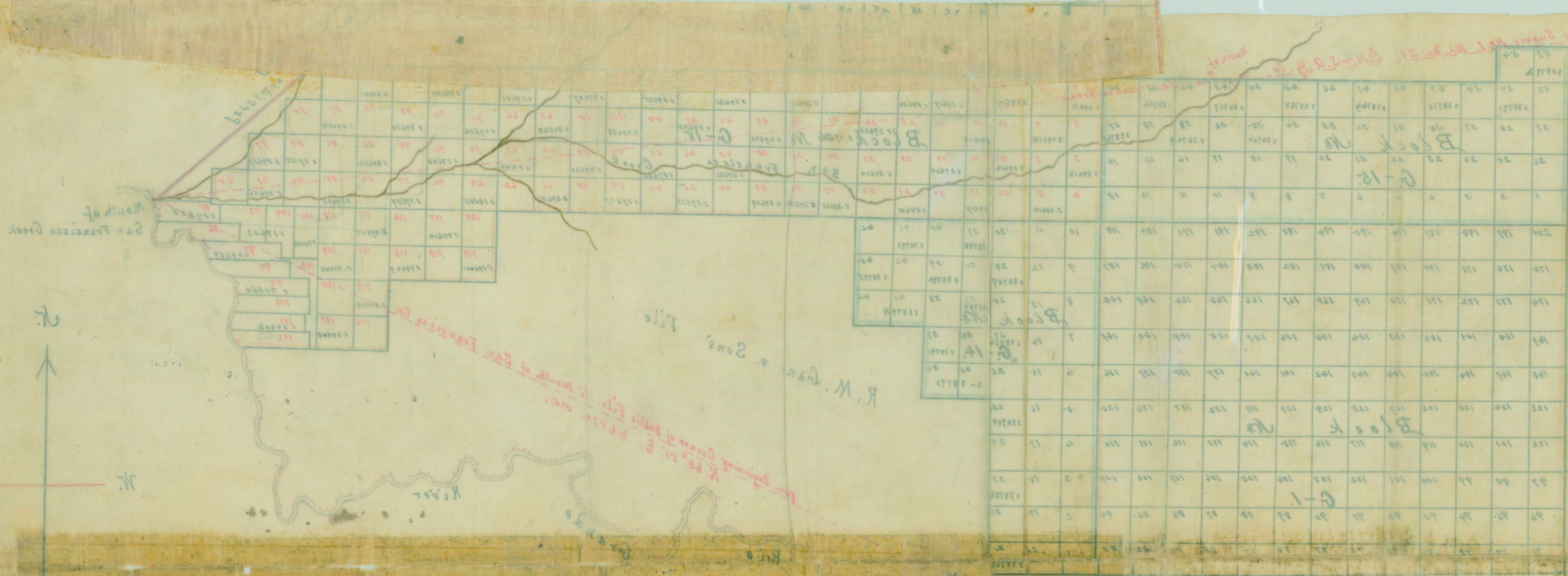
Sketch File No. N-5-1
 (North & South) Brewster County
 Ino. T. Gano's Sk.
 Blk. G-10 & Adjoining Blks.
 Filed April 19th - 1882
 J. H. Walker, Comm.
 File Clerk

Descriptive: At mouth San Francisco Cr.
 87 M. S. 66 E Alpine Connection Mouth
 San Francisco Cr. to Mouth Matavillas Cr.

Sketch N^o 10.
 Presidio County
 Foley Co
 Now Brewster Co
 State files

See Plot in S-38450
 Filed same date
 P.M. Gano & Son's statement in
 connection with this sk. is
 in above mentioned protest.

Filed Apr 19/82
 by
 R. W. Gano & Son
 Rhoads Fisher
 atty at law



MAP
 of the Extremes
 South-East Part of PRESIDIO Co.
 Showing location of Blk. No. G-10 and the mouth of
 San Francisco Creek.
 And their connecting points.
 Scale: 4000 feet per inch
 --- Connecting Lines
 --- River Boundaries

I, Jno. T. Gano, Deputy Surveyor of Presidio County, do hereby certify that the above is a true & correct map of Blk. No. G-10 and the mouth of San Francisco Creek, according to the records of the Surveyor's Office, and that the lines, connections, bearings, &c., were actually made in the field, by me, during the month of January, 1882.
 Given under my hand, this 30th day of March 1882, at Fort Davis, Tex.
 Jno. T. Gano, Deputy Surveyor Presidio Co.

I, E. G. Cairn, Surveyor of Presidio County, have this day, examined the above map, and do hereby approve the same.
 E. G. Cairn
 Given under my hand, at Fort Davis, Tex., this 31st day of March 1882.
 Surveyor Presidio Co.
 March 10/82

COUNTY P# 18965