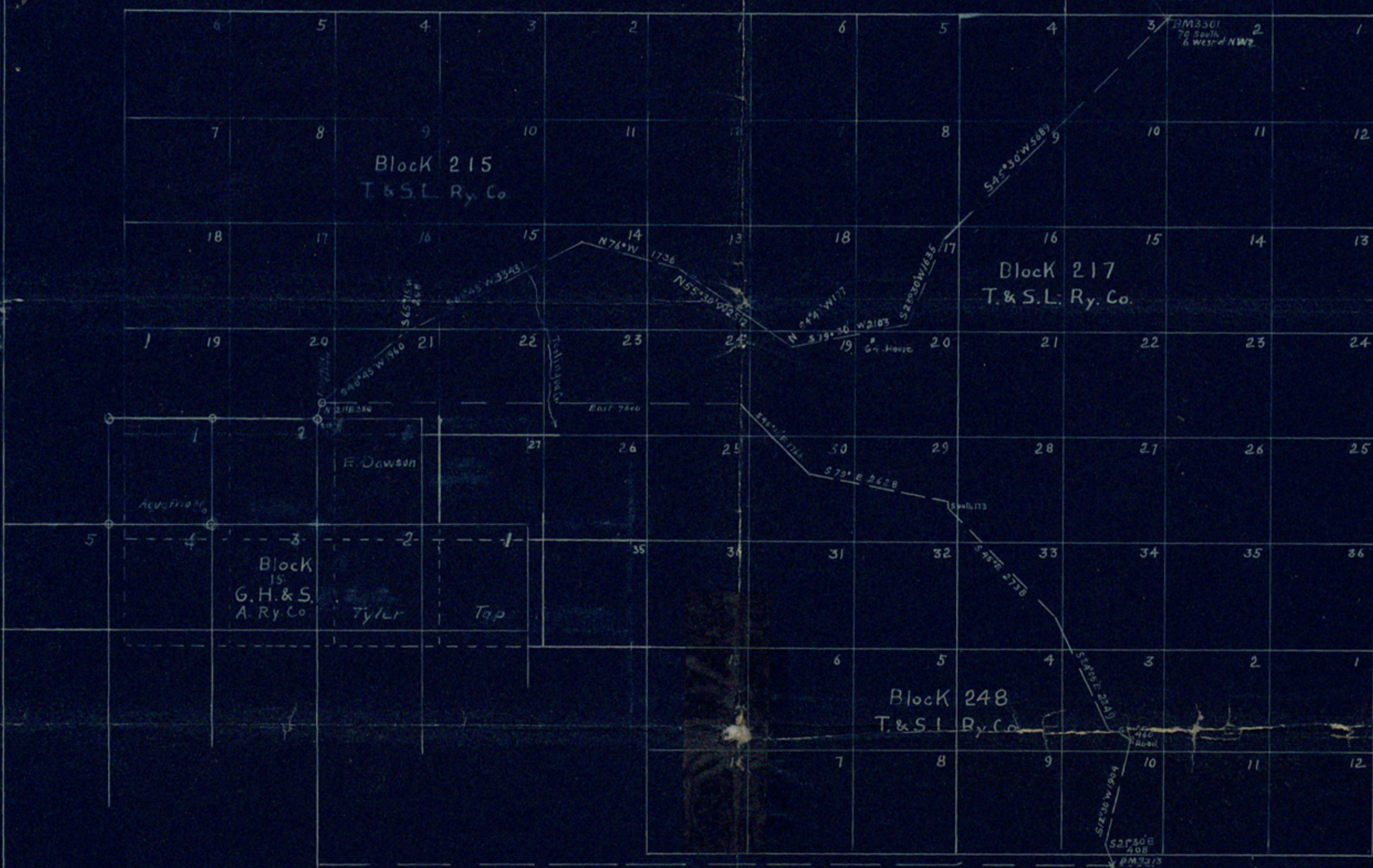


Map of Traverse
 to connect row of Original Corners
 in Block 213 T.&S.L. Ry. Co. Brewster Co.
 with the NE Cor. Sur. 1, Block 15 G.H.&S.A. Ry. Co.
 to show the relative position, on the ground, of
 Surveys in Block 215 T.&S.L. and Block 15 G.H.&S.A.

from actual Survey made May 1913
 by R.S. Dool
 State Surveyor

Also showing Traverse from NE Cor. Sur. 207 Block 64
 to NE Cor. Sur. 1 Block 15

from actual Survey made Sep. 1909
 by R.S. Dool
 State Surveyor



From NE Cor. 3, Blk 213
 to NE Cor. 1, Blk 15
 South 3391.4 varas
 West 15418.7 varas

NE Cor. 2, Blk 15 is
 218 varas West
 286 = North
 of SE Cor. 2, Blk 215 by
 Course and Distance from
 center of NE. 215 - 216



Scale 2000 varas to 1 inch.

Original Corners
 Marked

I, R.S. Dool, State Surveyor, do hereby certify
 that the above map is a true & correct copy of
 of the same, and that all monuments, natural and
 artificial, are shown in their proper position on
 the ground, and all corners are marked as
 shown on the map, by a true & correct survey
 of the ground made by me on the 17th day of
 May, 1913.
 R.S. Dool
 State Surveyor



COUNTER #
78966

~~#~~ Sketch ~~D~~
BREWSTER
County Sketch Files
N^o 3

Sketch and Connecting line
by R. S. Dod, State Surveyor,
from Block 213, T. 8, St. L. R. Co.,
South to Bk. 15, G. H. + H. R. Co., +
to Bk. G4.

Filed May, 19, 1913.
J. T. Robison, Commissioner
J. C. Clark,
Clerk

See other side for
new index number.

old sk. file D.
Sketch File No. N. S. 3.
(North & South) Brewster County
Dod's Sk. & Conn. line Bk. 213
South to Bk. 15 & Bk. G4.
Filed May 19, 1913. 1913
J. H. Walker, Comm.
File Clerk
Descriptive: 43 Mi. S. 5° E Alpine
This is old sketch file D.
For Report see sk. file N. S. 2.

See other side for re-
reference as to SK. D.

ka²