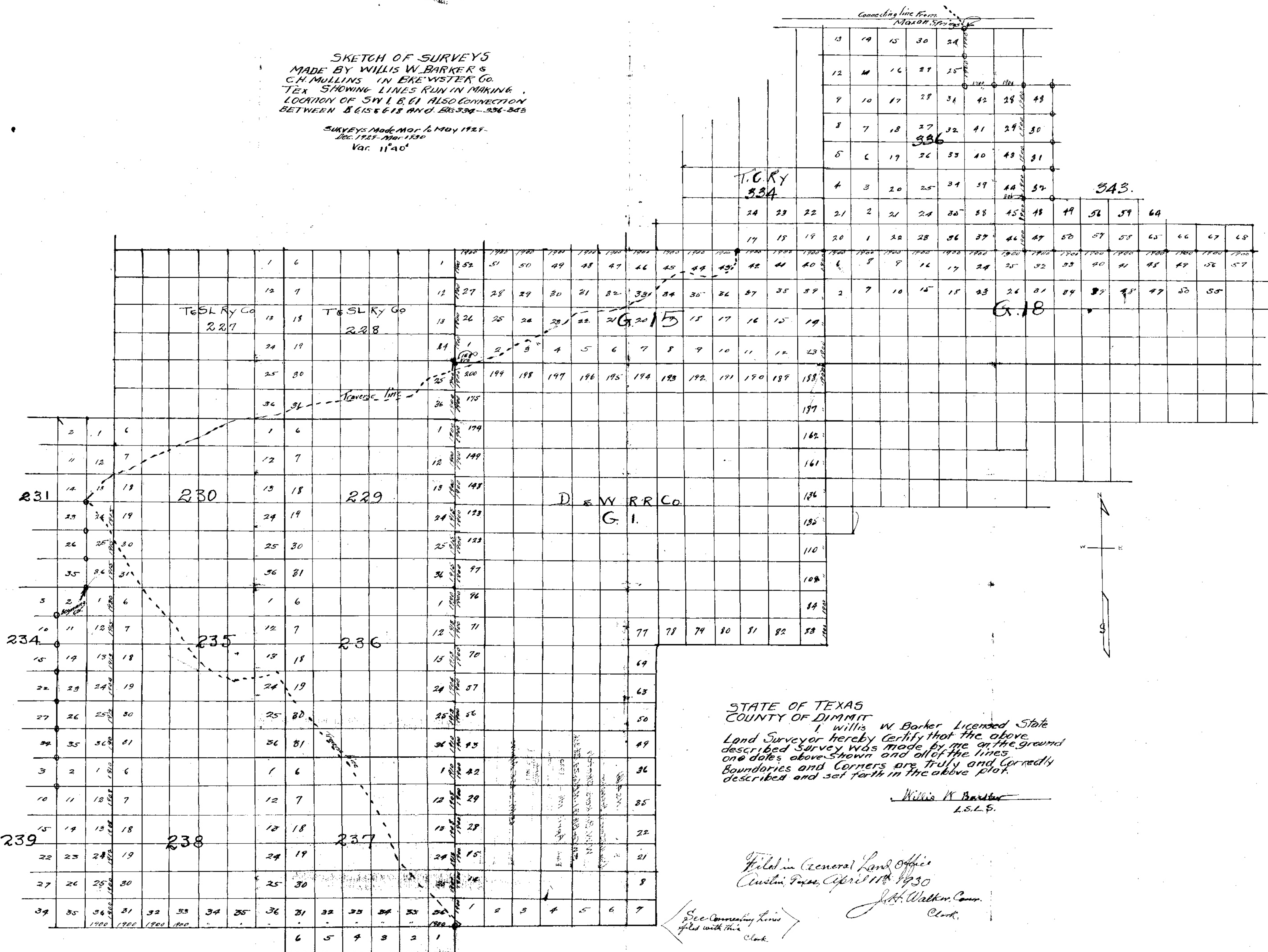


SKETCH OF SURVEYS  
 MADE BY WILLIS W. BARKER &  
 C.H. MULLINS IN EREWSTER CO.  
 TEX. SHOWING LINES RUN IN MAKING  
 LOCATION OF SW 1/4, E1 ALSO CONNECTION  
 BETWEEN B 615 & 618 AND B 534-336-305

SURVEYS MADE MO. 16 MAY 1927.  
 DEC. 1927 - MAR. 1930  
 Var. 11°40'



STATE OF TEXAS  
 COUNTY OF DIMMIT  
 I, Willis W. Barker, Licensed State  
 Land Surveyor hereby certify that the above  
 described survey was made by me on the ground  
 on dates above shown and all of the lines  
 boundaries and corners are truly and correctly  
 described and set forth in the above plot.

Willis W. Barker  
 L.S.L.S.

Filed in General Land Office  
 Austin, Texas, April 11th 1930  
 J.H. Walker, Comm.  
 Clerk.

See Connecting Lines  
 filed with this  
 Clerk.



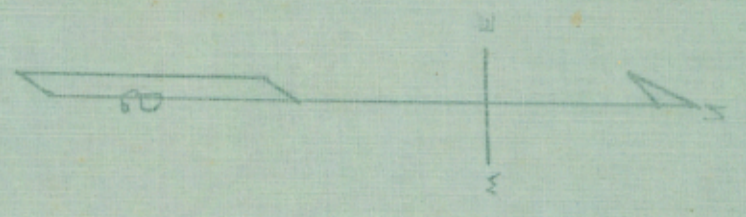
County # 18968

1	2	3	4	5	6	7	8	9	10	11	12	13	14	15	16	17	18	19	20	21	22	23	24	25	26	27	28	29	30	31	32	33	34	35	36	37	38	39	40	41	42	43	44	45	46	47	48	49	50	51	52	53	54	55	56	57	58	59	60	61	62	63	64	65	66	67	68	69	70	71	72	73	74	75	76	77	78	79	80	81	82	83	84	85	86	87	88	89	90	91	92	93	94	95	96	97	98	99	100
1	2	3	4	5	6	7	8	9	10	11	12	13	14	15	16	17	18	19	20	21	22	23	24	25	26	27	28	29	30	31	32	33	34	35	36	37	38	39	40	41	42	43	44	45	46	47	48	49	50	51	52	53	54	55	56	57	58	59	60	61	62	63	64	65	66	67	68	69	70	71	72	73	74	75	76	77	78	79	80	81	82	83	84	85	86	87	88	89	90	91	92	93	94	95	96	97	98	99	100

Sheet 7 of 10  
 (North & South) Brewster County  
 W.W. Barker's Sketch  
 S.W. 1/4 Sec. 9 - N.E. 1/4 Sec. 24 - T. 33 N. R. 33 W.  
 Filed April 17th 1930  
 J. D. Walker, Comm.  
 Clerk  
 File Clerk  
 Dist. 65 Mi. S. 45 E. Alpine

STATE OF TEXAS  
 COUNTY OF BREWSTER

W.W. Barker  
 Sheriff  
 I hereby certify that the above  
 is a true and correct copy of the  
 original as the same appears in  
 the files of the Sheriff's Office  
 at Alpine, Texas, this 17th day  
 of April 1930.



W. W. Barker  
 Sheriff

with reference to the  
 original as the same  
 appears in the files  
 of the Sheriff's Office  
 at Alpine, Texas, this  
 17th day of April 1930.

NOV 11 1930  
 J. D. Walker, Comm.  
 Clerk  
 File Clerk  
 DIST. 65 MI. S. 45 E. ALPINE

BETWEEN 2 1/2 AND 3 1/2 MILES FROM THE  
 TOWN OF ALPINE, BREWSTER COUNTY,  
 TEXAS, SHOWING THE LOCATION OF  
 THE PROPERTY IN THE ALPINE CO  
 MADE BY MITCHELL M. BARKER &  
 SKETCH OF SAME

1	2	3	4	5	6	7	8	9	10	11	12	13	14	15	16	17	18	19	20	21	22	23	24	25	26	27	28	29	30	31	32	33	34	35	36	37	38	39	40	41	42	43	44	45	46	47	48	49	50	51	52	53	54	55	56	57	58	59	60	61	62	63	64	65	66	67	68	69	70	71	72	73	74	75	76	77	78	79	80	81	82	83	84	85	86	87	88	89	90	91	92	93	94	95	96	97	98	99	100
1	2	3	4	5	6	7	8	9	10	11	12	13	14	15	16	17	18	19	20	21	22	23	24	25	26	27	28	29	30	31	32	33	34	35	36	37	38	39	40	41	42	43	44	45	46	47	48	49	50	51	52	53	54	55	56	57	58	59	60	61	62	63	64	65	66	67	68	69	70	71	72	73	74	75	76	77	78	79	80	81	82	83	84	85	86	87	88	89	90	91	92	93	94	95	96	97	98	99	100