

Mr. Lew Spencer  
Alpine, Texas

December 18, 1944

Dear Mr. Spencer:

In order to conform with the opinion of the Court of Civil Appeals, Eighth Supreme Judicial District of Texas, at El Paso, in Cause #4331, the State of Texas et al vs. Asa A. Jones et al, which became final October 4, 1944 when a writ of error was denied, all the sections in the T & St L Ry Co Blocks 225, 226, 227, 228, 229, 230, 231, 232, 233, 234, 235, 236, 237, 238, 239, 240, 242 and 243, Brewster County, surveyed by S. A. Thompson in 1881, must be resurveyed before patents can issue.

This resurvey should be based on the NW corner of Section 1, GH & SA Block 21, which is the beginning corner of Thompson's survey of the T & St L Ry Co blocks, and the SW corner of Section 1, D & W Ry Co Block G-1, as fixed by the Court. This corner is described as being 3128.4 Varas East and 3396 Varas South of what is known as the Hunklutt corner. The construction of the interior lines of these blocks should conform with the original corners established by Thompson, most of which were identified by Hunklutt in 1908.

M. P. Ball, Licensed State Land Surveyor, in his survey of December 1941 and January 1942, tied the NW corner of Section 1, GH & SA Block 21, and the Hunklutt corner to the triangulation network as established by the U. S. Coast and Geodetic Survey. The resulting geographic values for these NW corners are as follows: Section 1, GH & SA Block 21--Latitude 29° 36' 29.024"; Longitude 103° 12' 51.616"; Hunklutt corner--Latitude 29° 33' 51.931"; Longitude 102° 59' 56.239".

By calculations based on these geographic values, the location of the SW corner of Section 1, D & W Ry Co Block G-1, as fixed by the Court, is located 52,776 Varas south and 43,113 Varas east from the NW corner of Section 1, GH & SA Block 21 or East 42,964 Varas and South 52,776 Varas from that corner. The average East-West distance of the sections at the south end of this area will be 1959.7 Varas, while at the north end only 1848.9 Varas. The average North-South distance of the sections will be 1848.9 Varas. The area of an average section will approximate 653.2 acres.

I am enclosing a sketch of the T & St L Ry Co blocks and have indicated thereon the original corners established by Thompson. Please, therefore, submit corrected field notes on all of your sections located in the above listed blocks.

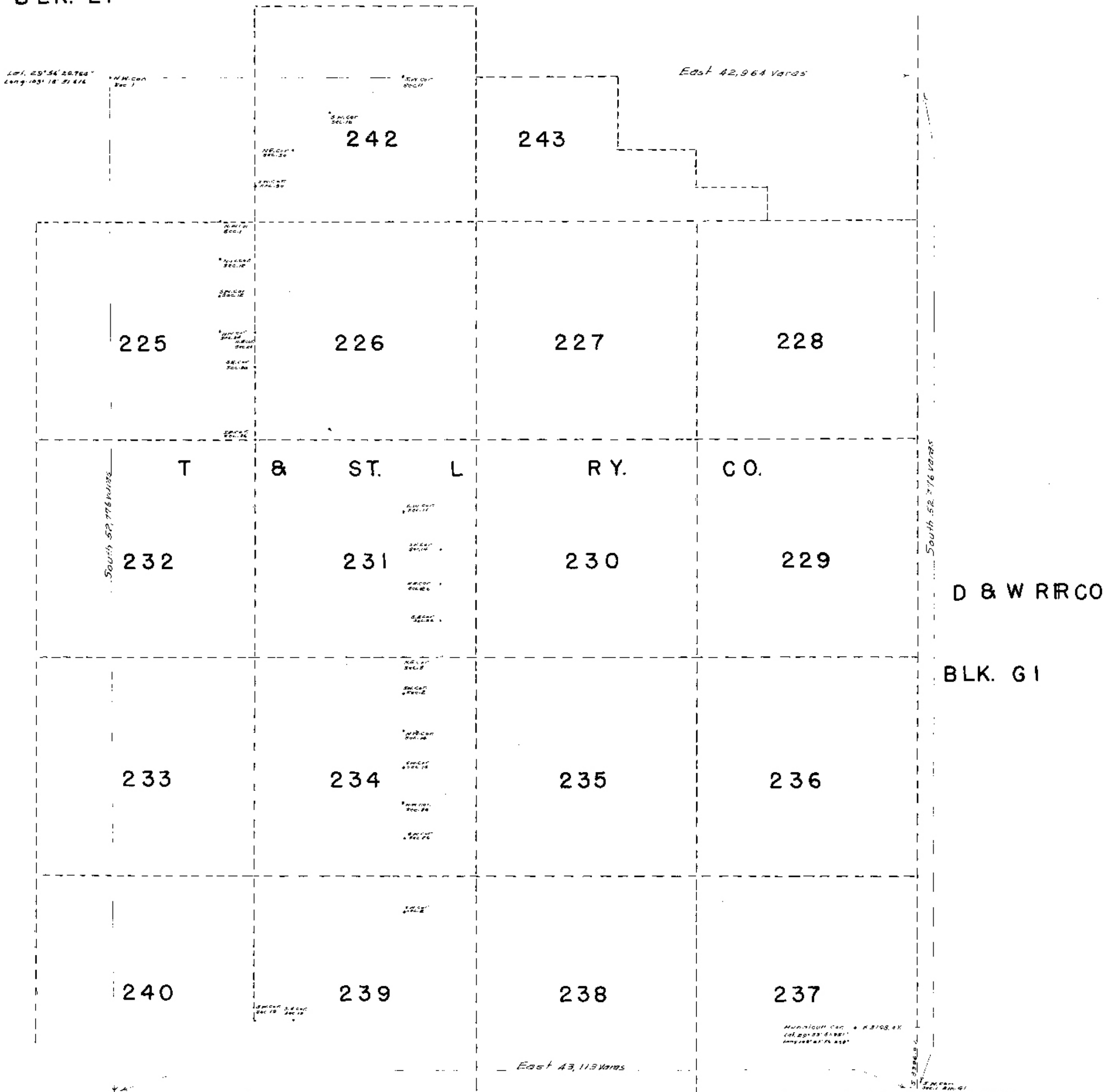
Sincerely yours,

BASCOM GILLS, COMMISSIONER  
OF THE GENERAL LAND OFFICE

MWR:IS  
Encl.  
cc

G H & S A RY. CO.

BLK. 21



GENERAL LAND OFFICE  
BREWSTER COUNTY  
SEE LETTER OF DEC. 18, 1944  
TO  
LEW SPENCER  
ALPINE, TEXAS  
Scale 1" = 4000'.  
M. P. Ball

cc  
SPOUT  
HONORARY

OF THE GENERAL LAND OFFICE  
BYSCOCK CITY, COMMISSIONER  
STANDARD FORM NO. 1

In the above case, the land in question is located in the  
Block 21, Section 1, Township 10N, Range 10E, County of Brewster,  
State of Texas. The land is owned by the State of Texas, and is  
being offered for sale to the highest bidder.

The land in question is located in the Block 21, Section 1,  
Township 10N, Range 10E, County of Brewster, State of Texas.  
The land is owned by the State of Texas, and is being offered  
for sale to the highest bidder.

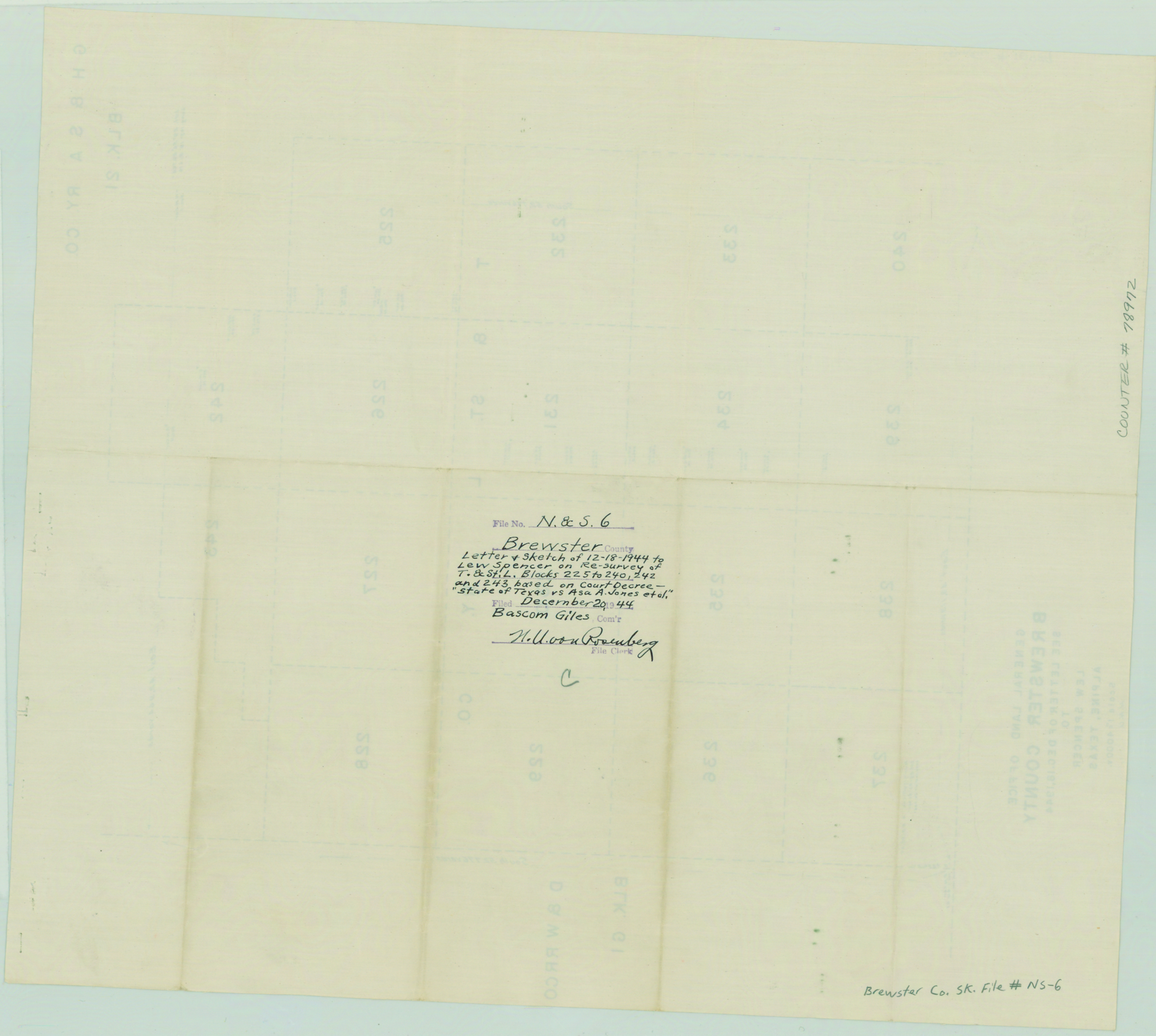
The land in question is located in the Block 21, Section 1,  
Township 10N, Range 10E, County of Brewster, State of Texas.  
The land is owned by the State of Texas, and is being offered  
for sale to the highest bidder.

The land in question is located in the Block 21, Section 1,  
Township 10N, Range 10E, County of Brewster, State of Texas.  
The land is owned by the State of Texas, and is being offered  
for sale to the highest bidder.

The land in question is located in the Block 21, Section 1,  
Township 10N, Range 10E, County of Brewster, State of Texas.  
The land is owned by the State of Texas, and is being offered  
for sale to the highest bidder.

Very truly yours,  
Commissioner

December 19, 1944



File No. N. & S. 6  
 Brewster County  
 Letter & Sketch of 12-18-1944 to  
 Lew Spencer on Re-survey of  
 T. & S. L. Blocks 225 to 240, 242  
 and 243, based on Court Decree -  
 "State of Texas vs Asa A. Jones et al."  
 Filed December 29, 1944  
 Bascom Giles Com'r  
 H. U. Rosenberg  
 File Clerk

BREWSTER COUNTY  
 GENERAL LAND OFFICE  
 SEE LETTER OF DECISION

Brewster Co. SK. File # NS-6

COUNTER # 18972