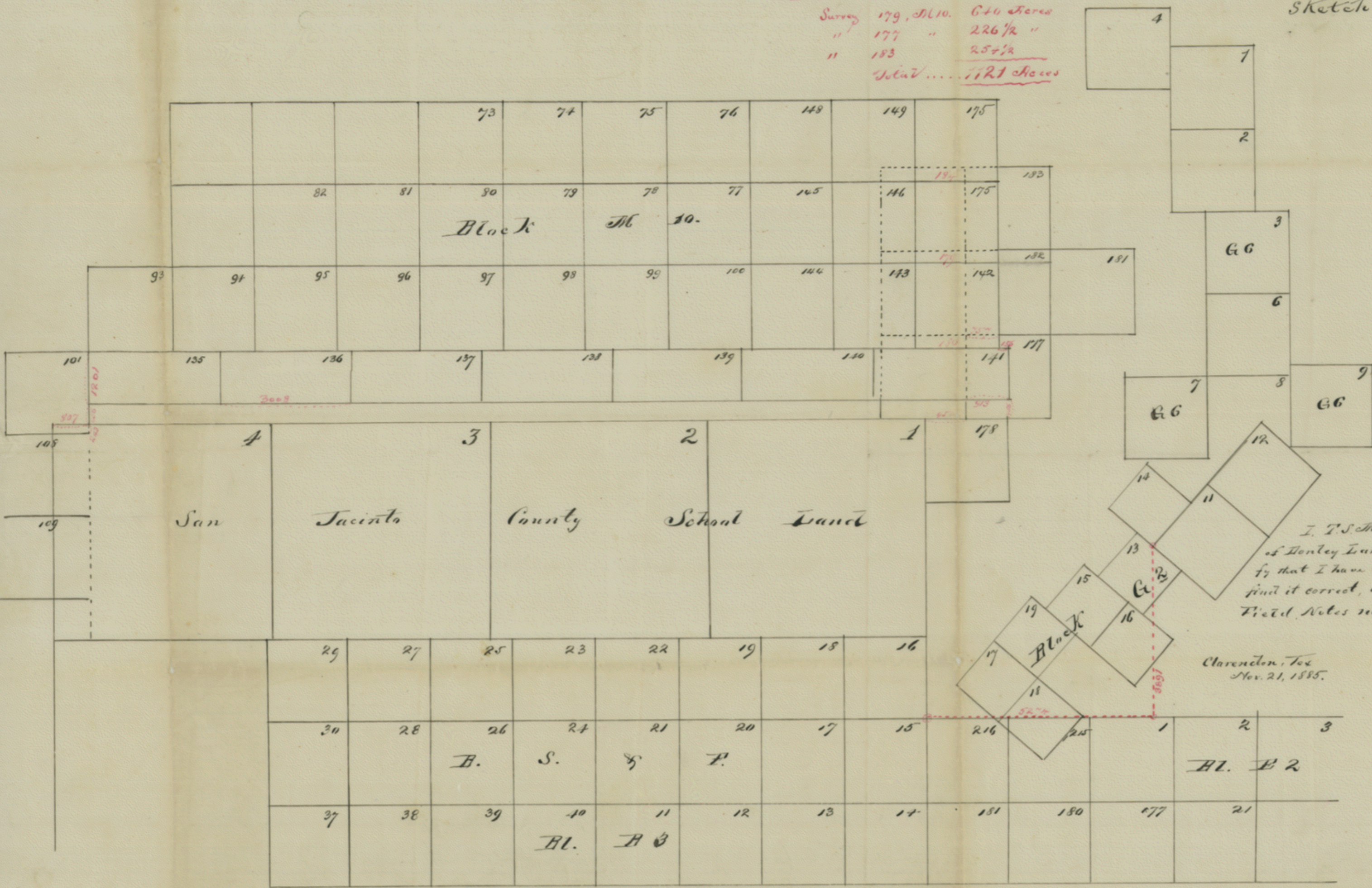


Conflict

Survey 179, Bl. 10. 646 Acres
" 177 " 226 1/2 "
" 183 " 25 1/2 "
Total ... 1121 Acres

Sketch Briscoe Co.



I, J. S. McClelland, District Surveyor
of Dentley Land District, do hereby certify
that I have examined this Sketch, and
find it correct, and in accordance with
Field Notes now on file in my office
J. S. McClelland
Dist. Sur. D. L. Dist.

Clarendon, Tex.
Nov. 21, 1885.

SK. FILE #3
BRISCOE Co.

Surveyor's Office
Clarendon, Tex. as
Nov. 21 1885

Report of connecting lines between
B. & C. Co. Sur. No. 1 Bl. B. & C.
and the West Co. Sur. No. 14 Bl. B.
of Briscoe Co.

Begin at the established corner of
C. W. Sur. No. 1 B. & C. Bl. B. & C. 4/1500
corner being a large earth mound and
Plays, thence West 120 miles, Post.
thence North 15 miles to large oak
mound marked X in corner of Salt Co. returned
C. W. on the X, Co. 613 E 246⁰⁰ No. 587 or
125⁰⁰ for the C. & C. Co. Sur. No. 15.
B. & C. Bl. B. & C. 4/1500
thence East 5274⁰⁰ no. Post.
thence North 3891⁰⁰ Cypress, etc.
mound on edge of hill, the water level
cross. Sur. No. 14 Bl. B. & C.
V. S. A. R. Co. Cert. No. 2/309

West

Surveyed Nov. 10-20 1884
Jno. A. Key Chain
Jas. M. Johnson (Over)

I, J. J. McElland
Surr. of New York Land Dist.
hereby certify that the foregoing
Survey was actually made
on the ground and that said
connection is a true and correct
one to the best of my knowledge
and belief and that field notes
of said Survey are now on file
in my Office. Witness my
hand officially

J. J. McElland
Surr. New York Land Dist.

file No. 3:
Briscoe Co.

Sketch & connection
filed Jan. 17/86.

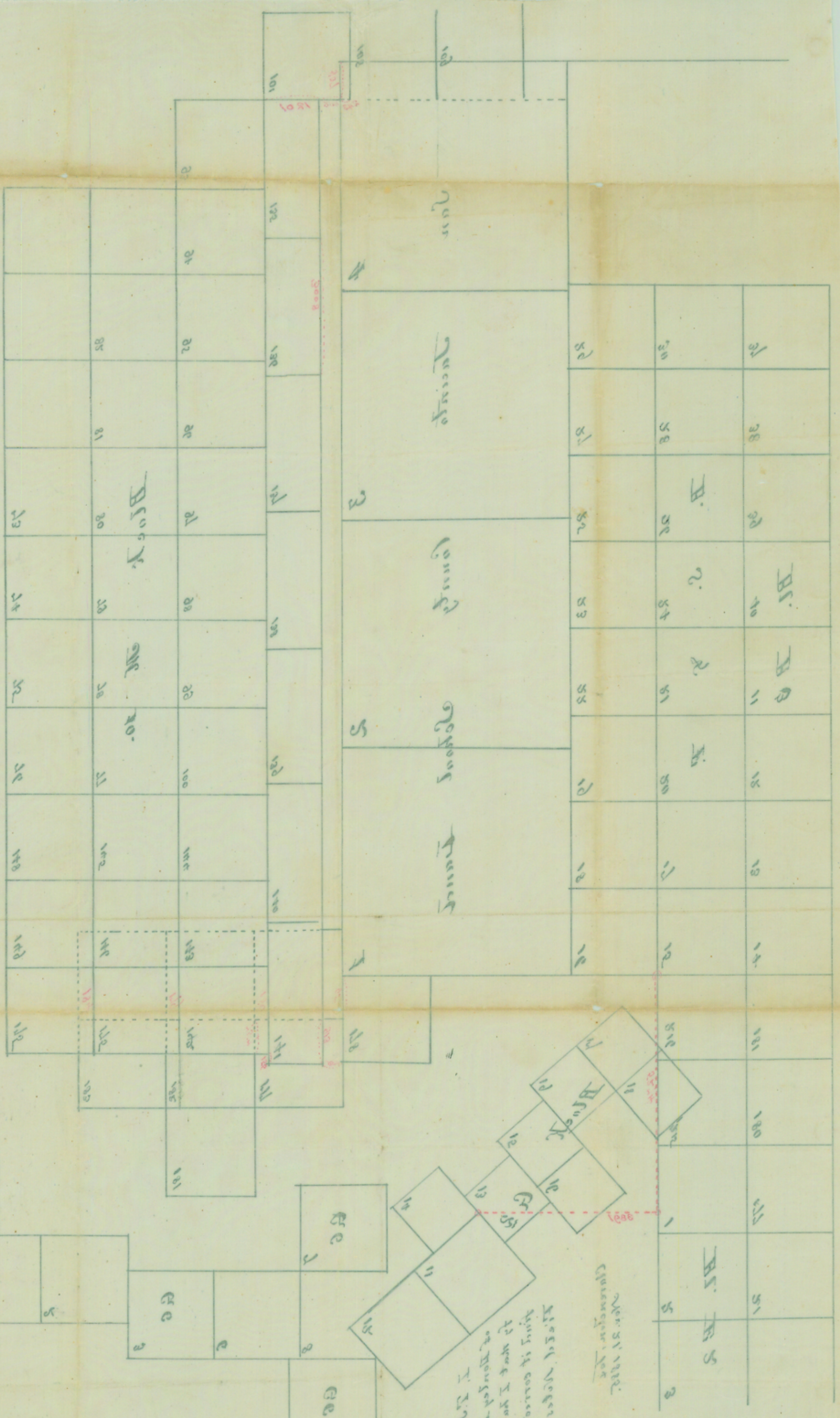
D. N. Robinson
Chy. El. 14

By T. S. McClelland
L.S.M., N. 20° W., Silverton

Rebun
Jan 7/86
file & with sketches
in with some papers
re: same
Shovel & Shovel
Franklin

Count # 10005
BRISCOE Co
St. FILE #3

COUNTER # 80036



Witness my hand
this 17th day of
Jan. 1886
D. N. Robinson
Chy. El. 14

County
188
189
190
191
192
193
194
195
196
197
198
199
200
201
202
203
204
205
206
207
208
209
210
211
212
213
214
215
216
217
218
219
220
221
222
223
224
225
226
227
228
229
230
231
232
233
234
235
236
237
238
239
240
241
242
243
244
245
246
247
248
249
250
251
252
253
254
255
256
257
258
259
260
261
262
263
264
265
266
267
268
269
270
271
272
273
274
275
276
277
278
279
280
281
282
283
284
285
286
287
288
289
290
291
292
293
294
295
296
297
298
299
300

Sketcher
Briscoe Co