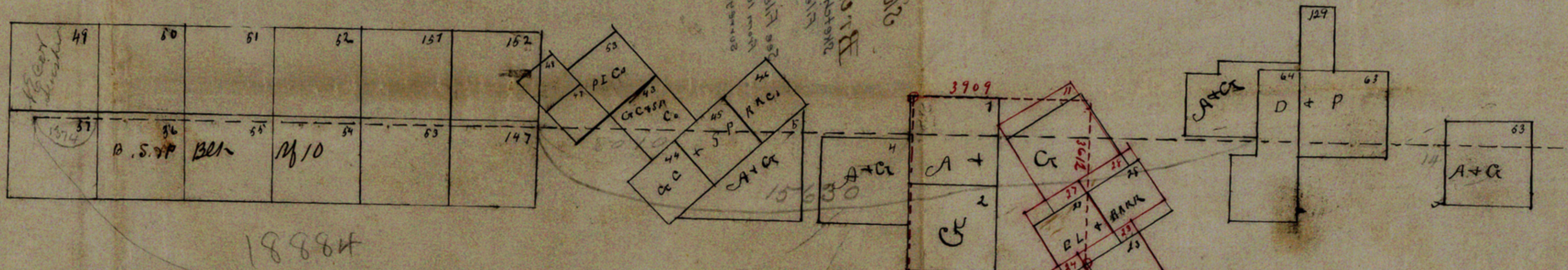


from SE cor of N 129 24 + 4
 to NE cor of N 147 24 + 8
 by notes of connecting line filed
 15630 W.

Remnants of N 147 24 + 8
 of N 129 24 + 4
 by notes of connecting line filed
 15630 W.



18884

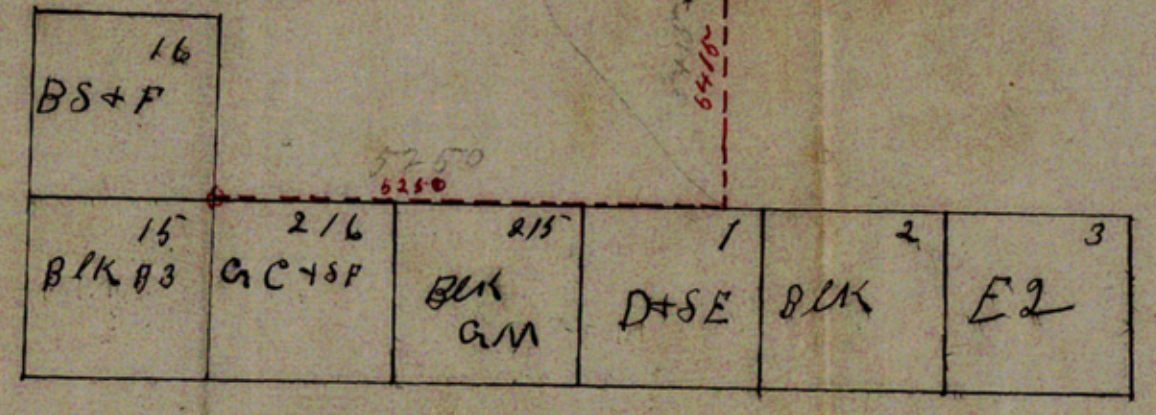
I Nat & Waller Surveyor of Beavere County
 do hereby certify that the above sketches maps
 with together with the accompanying
 field notes does truly show the connections
 between the land lines & the North boundary
 line of Beavere County between the NW cor
 ner of survey No 53 A+G Blk Co 6 & sur
 vey No 57. B.S.+P Blk No 10

Also the connection between SE corner of survey
 No 16 B.S.+P Blk 3 & the W corner of survey No 11
 G.C.+S.P. & between ^{corner} No 11 & survey No 1 A+G Blk Co 6
 & between said No 1 and No 20 G.C.+S.P. Blk Co 6
 as indicated on maps are ~~true~~ correct

Nat & Waller

Surveyor of
 Beavere Co. W

Subscribed
 April 9 1894



CONTEST # 10884

189901 # 109901

COUNTY # 80022



Sketch A
 Briscoe Co
 Sketch by Nat. G. Waller,
 Filed May 26, 1894.

See File No A1 for statement.
 From 10 Mi. North-northward to
 Surreys along County line

18884

18881

18880

18882

18883

18884

18885

18886

18887

18888

18889

18890

18891

18892

18893

18894

18895

18896

18897

18898

18899

18900

18901

18902

18903

18904

18905

18906

18907

18908

18909

18910

18911

18912

18913

18914

18915

18916

18917

18918

18919

18920

18921

18922

18923

18924

18925

18926

18927

18928

18929

18930

18931

18932

18933

18934

18935

18936

18937

18938

18939

18940

18941

18942

18943

18944

18945

18946

18947

18948

18949

18950

18951

18952

18953

18954

18955

18956

18957

18958

18959

18960

18961

18962

18963

18964

18965

18966

18967

18968

18969

18970

18971

18972

18973

18974

18975

18976

18977

18978

18979

18980

18981

18982

18983

18984

18985

18986

18987

18988

18989

18990

18991

18992

18993

18994

18995

18996

18997

18998

18999

19000

18880

18881

18882

18883

18884

18885

18886

18887

18888

18889

18890

18891

18892

18893

18894

18895

18896

18897

18898

18899

18900

18901

18902

18903

18904

18905

18906

18907

18908

18909

18910

18911

18912

18913

18914

18915

18916

18917

18918

18919

18920

18921

18922

18923

18924

18925

18926

18927

18928

18929

18930

18931

18932

18933

18934

18935

18936

18937

18938

18939

18940

18941

18942

18943

18944

18945

18946

18947

18948

18949

18950

18951

18952

18953

18954

18955

18956

18957

18958

18959

18960

18961

18962

18963

18964

18965

18966

18967

18968

18969

18970

18971

18972

18973

18974

18975

18976

18977

18978

18979

18980

18981

18982

18983

18984

18985

18986

18987

18988

18989

18990

18991

18992

18993

18994

18995

18996

18997

18998

18999

19000