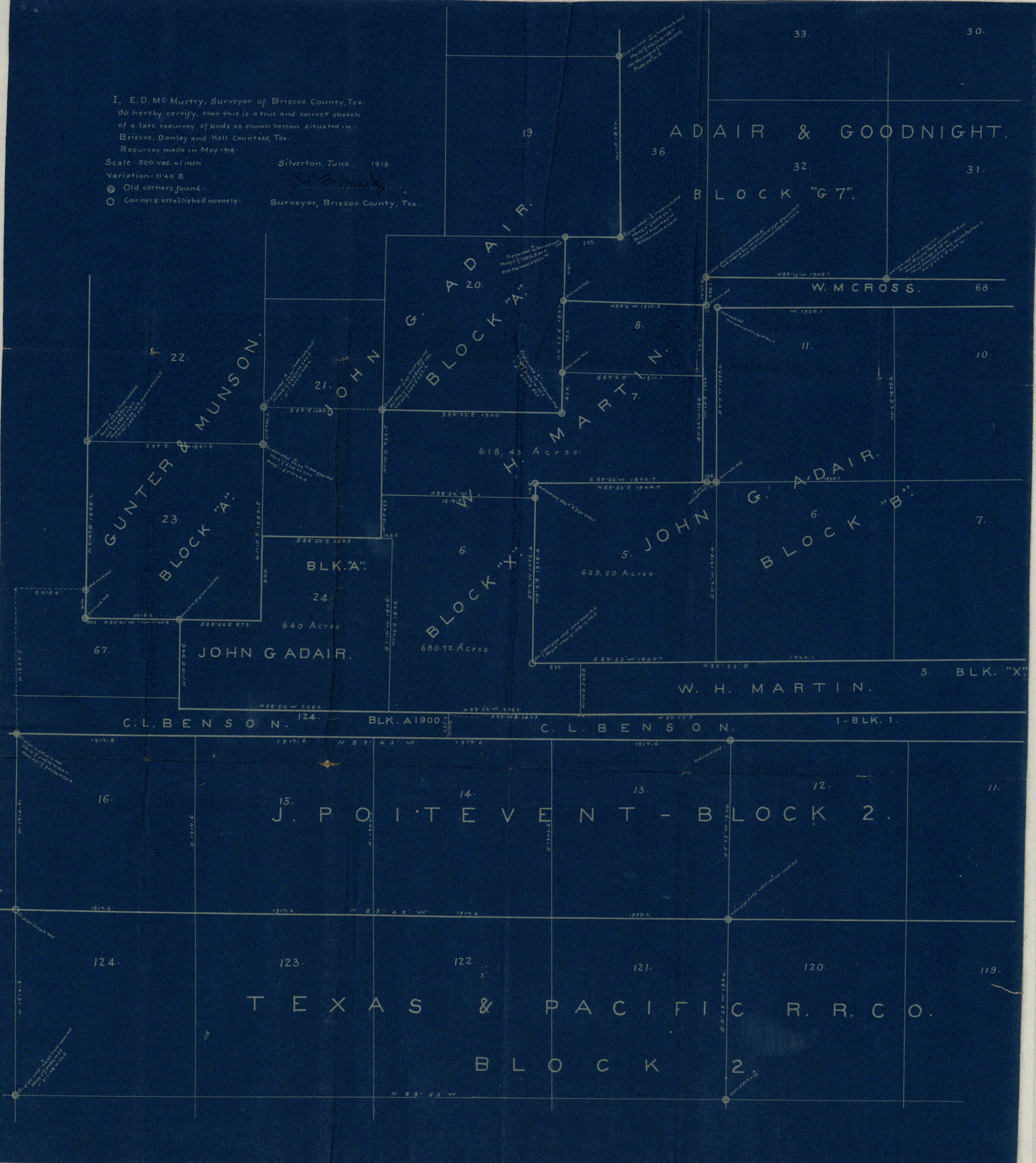


I, E. D. Mc Murtry, Surveyor of Briscoe County, Tex.
do hereby certify, that this is a true and correct sketch
of a late resurvey of lands as shown hereon, situated in
Briscoe, Donley and Hall Counties, Tex.
Resurvey made in May 1918.

Scale: 500 yds. = 1 inch
Variation: 11'40" E
⊙ Old corners found.
○ Corners established recently.

Silverton, June 11, 1918.
E. D. Mc Murtry
Surveyor, Briscoe County, Tex.



COUNTER # 80025

Sketch D

Briscoe Co.

Certified Sketch
by E. D. McMurry
Co. Surv.

Filed Oct. 18, 1918
Extreme N.E. Cor. County.

Briscoe Co. SK. File # D