

PLAT
OF A PORTION OF THE EAST
PART OF BRISCOE CO. WITH CON-
NECTIONS OF LAND TIES SHOWN,
AS FOUND ON THE GROUND.

MADE FOR W. E. SCHOTT.
JANUARY 1935

SCALE 1" = 300 VS.

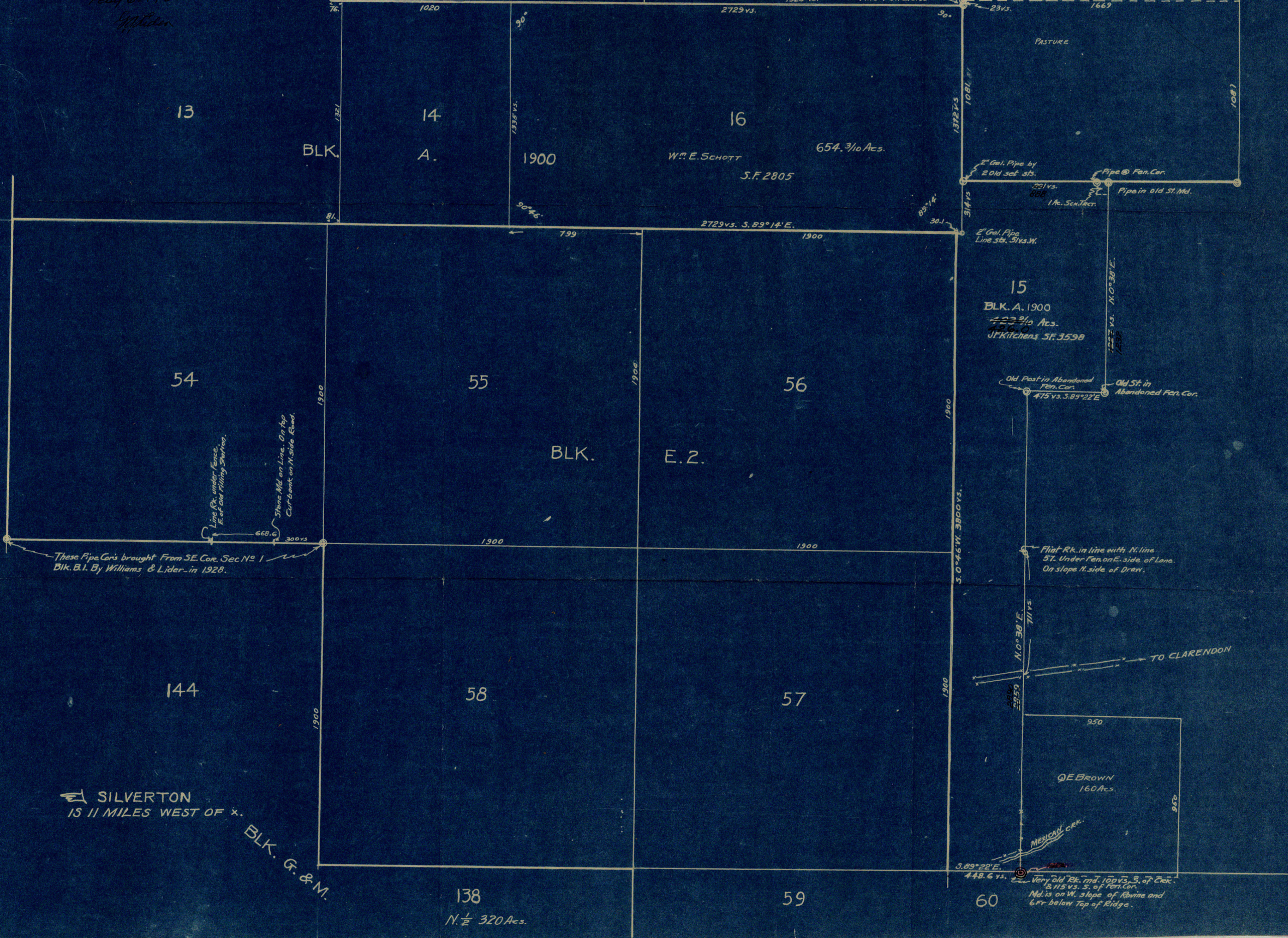
LICENSED STATE LAND SURVEYOR
OF TEXAS

W. E. Schott

W. E. Schott

Corrections made
Feb'y 6 - 1935

W. E. Schott



SILVERTON
IS 11 MILES WEST OF *

BLK. G. & M.

138
N. 1/2 320 Acs.

60
Very Old Rk. rd. 100 vs. S. of Crk.
3 1/2 vs. S. of Pen. Cor.
Mds on W. slope of Ravine and
6 ft below Top of Ridge.

SKETCH FILE NO. 7
COUNTY DISTRICT

Briscoe Co. SK. File # L

Sketch File No. L
Briscoe County
Sk. by G.A. Linder
NE cor. Blk E2. Part of Blk 60.
Filed Feb. 18th 1935.
Allen
J. P. Walker, Comm.
File Clerk
Descriptive:
13. m. N. 85 E.