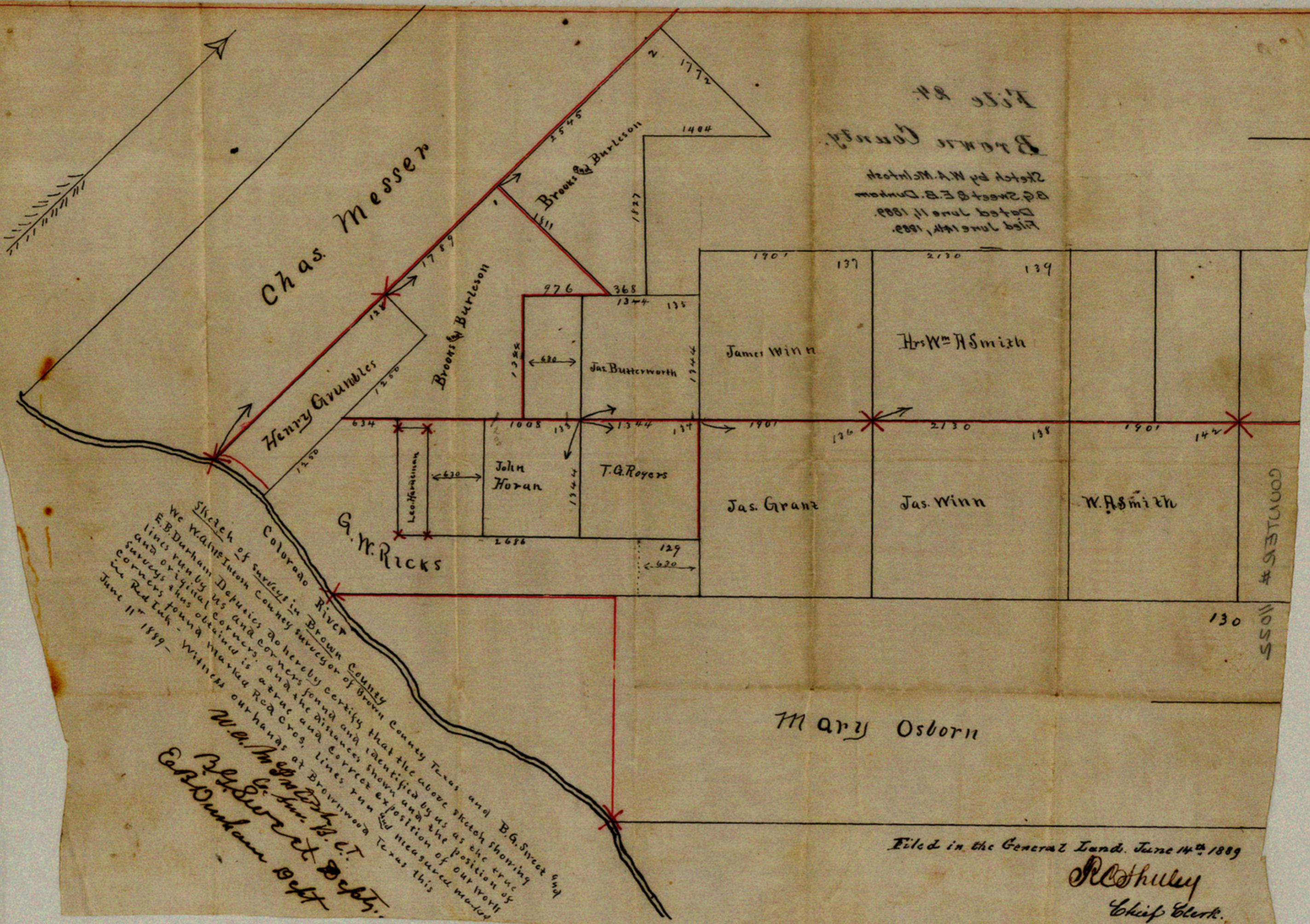


File #
Brown County

Sketch by W.A. McIntosh
of Sweet & E.S. Dunham
Dated June 11, 1889.
Filed June 14, 1889.



Sketch of survey in Brown County Texas and B.G. Sweet and E.B. Durham Deputies do hereby certify that the above sketch showing lines run by us and corners found and identified by us as the true and original corners, and the distances shown and the position of corners thus obtained is a true and correct exposition of our work in Red Lake - Witness our hands at Brownwood Texas this June 11th 1889 -
W.A. McIntosh
B.G. Sweet
E.B. Durham Depts.

Filed in the General Lands. June 14th 1889

R. Shulley
Chief Clerk.

COMPLET # 11055

SKETCH FILE No. 24
COUNTY Brown

