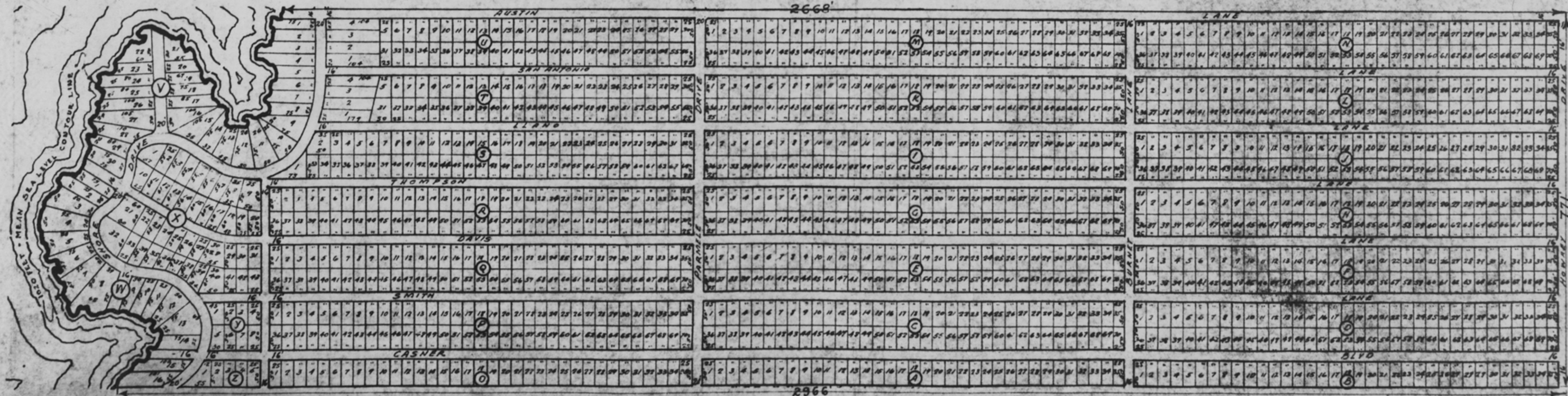


# LAKE SHORES SUBDIVISION NO. 1.

JEPHTHA BOYCE SURVEY NO. 400.

BURNET COUNTY TEXAS



Burnett Co Sh Feb  
Sub-division of  
Jeptha Boyce Sur.  
(39)

COUNTER# 80055

Burnet Co. Sh. File # 39