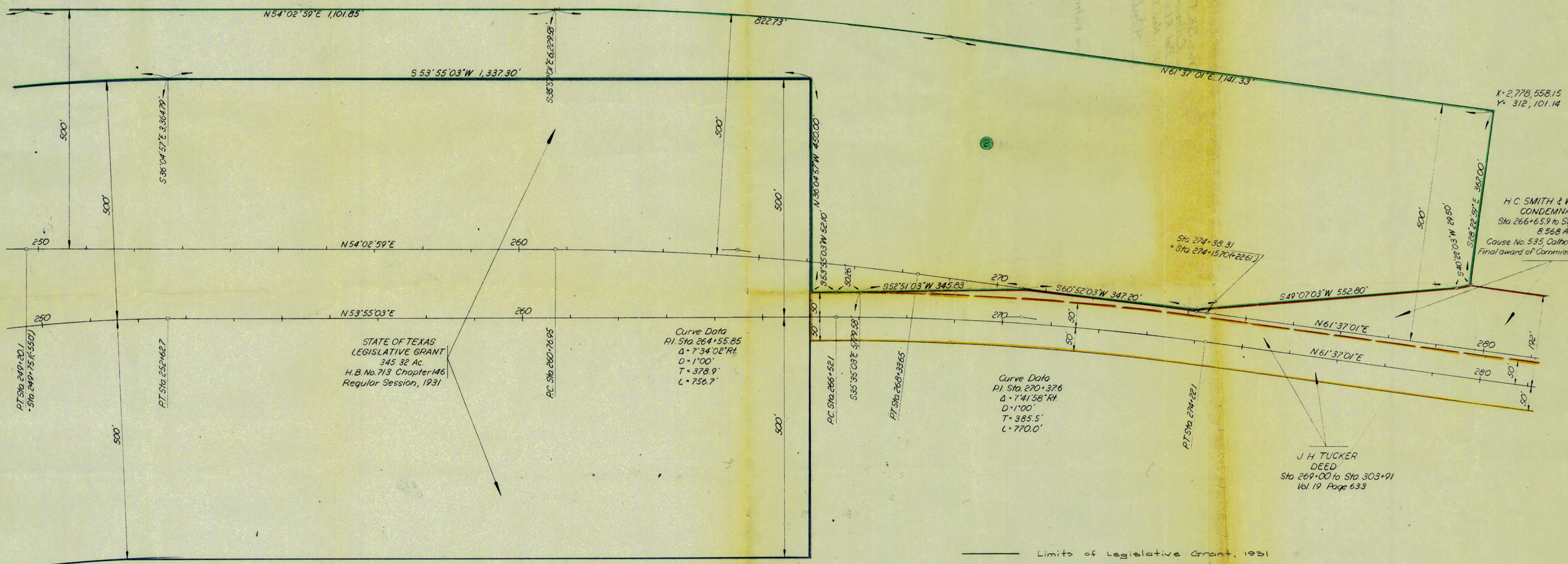
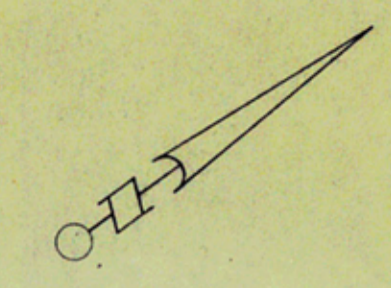


BLOCK NO. 22A

CALHOUN COUNTY NAVIGATION DISTRICT

DEED
25.784 Ac.
Vol. Page

LAVACA BAY



STATE OF TEXAS
LEGISLATIVE GRANT
345.32 Ac.
H.B. No. 713 Chapter 146
Regular Session, 1931

Curve Data
PI Sta. 264+55.85
 $\Delta = 734.02^\circ$ Rt.
D = 1'00"
T = 378.9'
L = 756.7'

Curve Data
PI Sta. 270+376
 $\Delta = 741.58^\circ$ Rt.
D = 1'00"
T = 385.5'
L = 770.0'

H. C. SMITH & W. H. BAUER
CONDEMNATION
Sta. 266+65.9 to Sta. 302+80.7
8.568 Ac.
Cause No. 535, Calhoun Co. Court
Final Award of Commissioners Oct. 12, 1956

J. H. TUCKER
DEED
Sta. 269+00 to Sta. 303+91
Vol. 19 Page 633

- Limits of Legislative Grant, 1931
- Limits of Proposed Acquisition From State Land Board
- Limits of Proposed Acquisition From Calhoun County Navigation District
- Additional R.O.W. Acquired in 1956
- R.O.W. Limits for Project S.P. No. 869-A, 1931

LAVACA BAY

FED. RD. DIV. NO.	STATE	FEDERAL PROJECT NO.	SHEET NO.
6	TEXAS		3
STATE DIST. NO.	COUNTY	CONT. SECT. JOB	HIGHWAY NO.
13	Calhoun	179 10	SH 35



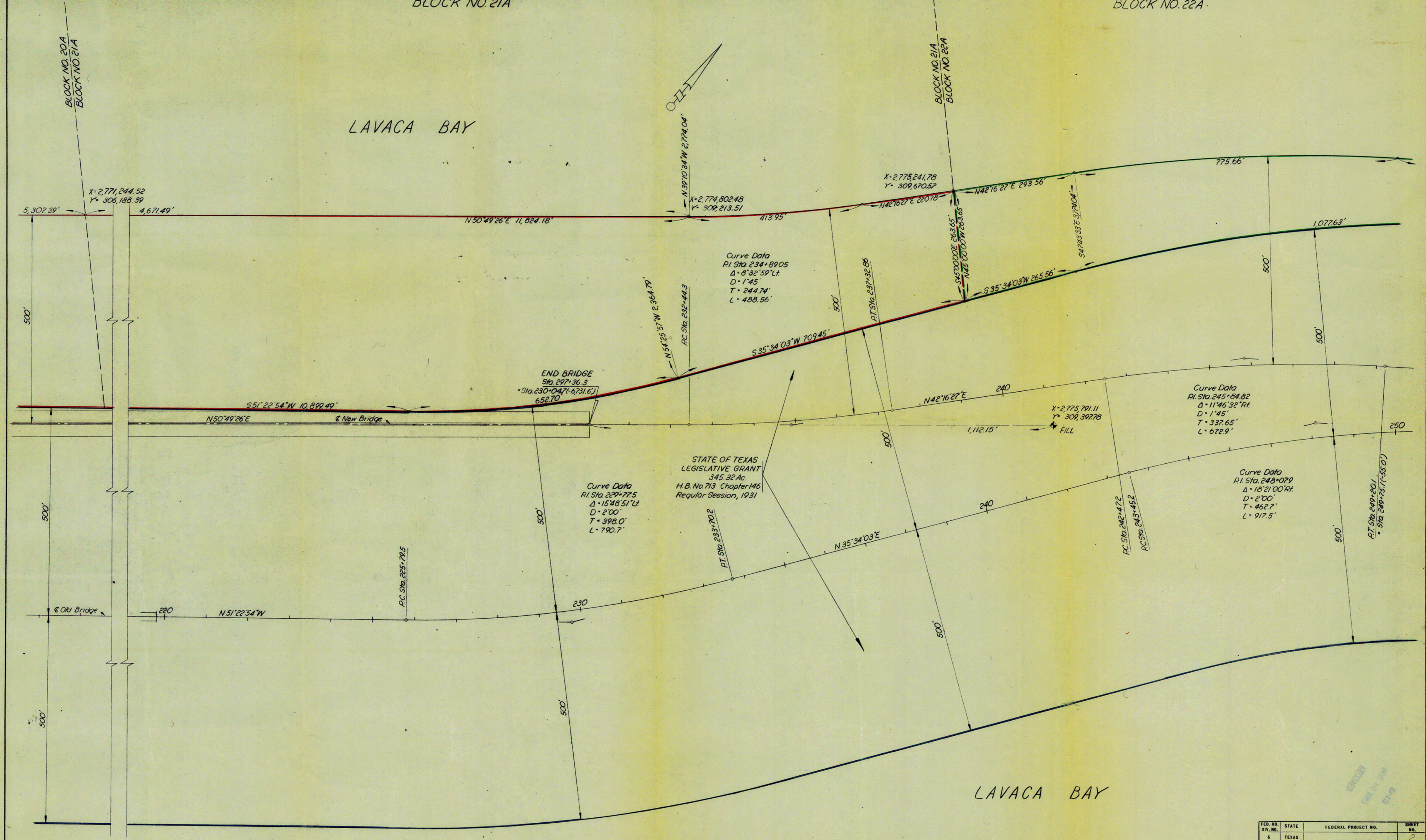
RECEIVED
AUG 10 1967
D-15

BLOCK NO. 21A

BLOCK NO. 22A

LAVACA BAY

LAVACA BAY

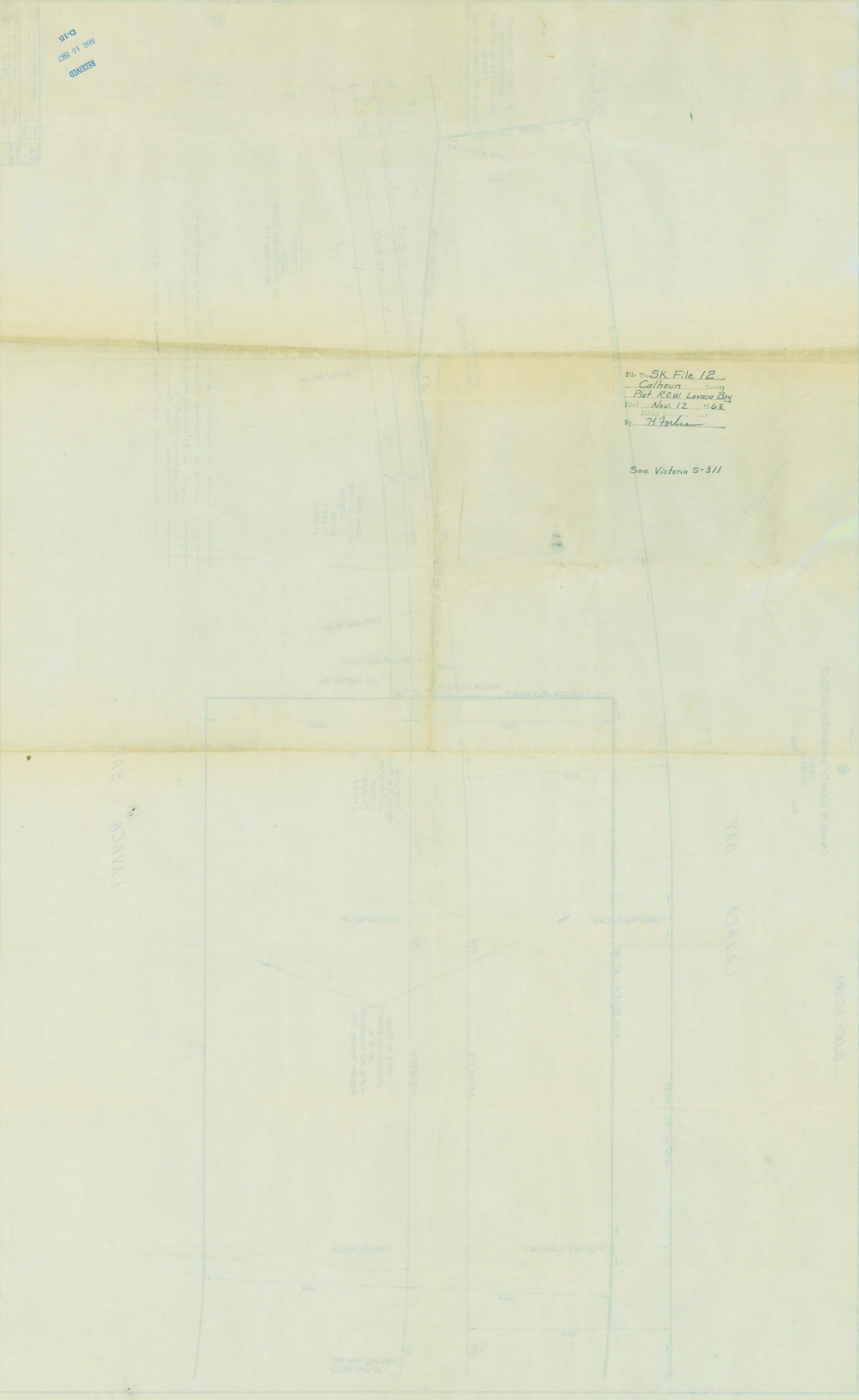


FED. RD. DIV. NO.	STATE	FEDERAL PROJECT NO.	SHEET NO.
6	TEXAS		2
STATE DIST. NO.	COUNTY	CONT. SECT. JOB	HIGHWAY NO.
13	Calhoun	179 10	5H.35

SKETCH FILE No. 12
 COUNTY Calhoun (2 of 3)

RECEIVED
AUG 10 1967
D-15

NO.	DATE	BY	REMARKS



File No. SK File 12
Calhoun County
Plat R.O.W. Lavaca Bay
 Filed Nov. 12 1968
 By H. Forbes

See Victoria S-311

SANACA BAY

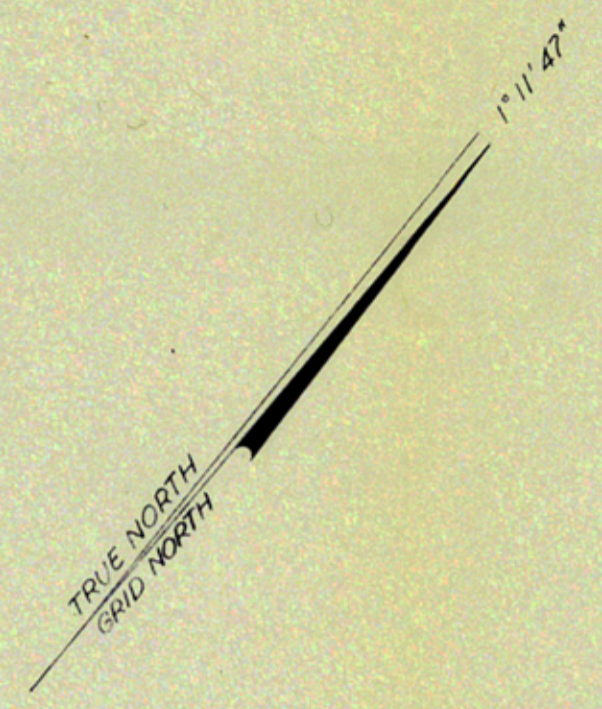
SANACA BAY

STOCK VC 554

STATE OF TEXAS
STATE LAND BOARD
DEED
119.510 Ac.
Vol. Page

LAVACA BAY

BLOCK NO. 19A
BLOCK NO. 20A



X=2,765,794.24
Y=301,554.34

NOTE: ALL BEARINGS REFER TO TRUE NORTH

R.O.W. Curve
P.I. Sta 171+00.2
Δ=18°08' Lt
D=1'30"
T=609.3'
L=1208.3'

Construction Curve
P.I. Sta 171+00.2
Δ=18°41'28" Lt
D=1'45"
T=538.57'
L=1067.62'

JOHN A. GARNER & W.D. GARNER
CONDEMNATION
Sta 159+10 to Sta 181+52
14.170 Ac
Cause No 532 Calhoun Co Court
Final award of Commissioners October 5, 1956
and EASEMENT
Vol 126 Page 310

BEGIN BRIDGE
Constr. Sta 178+33.35

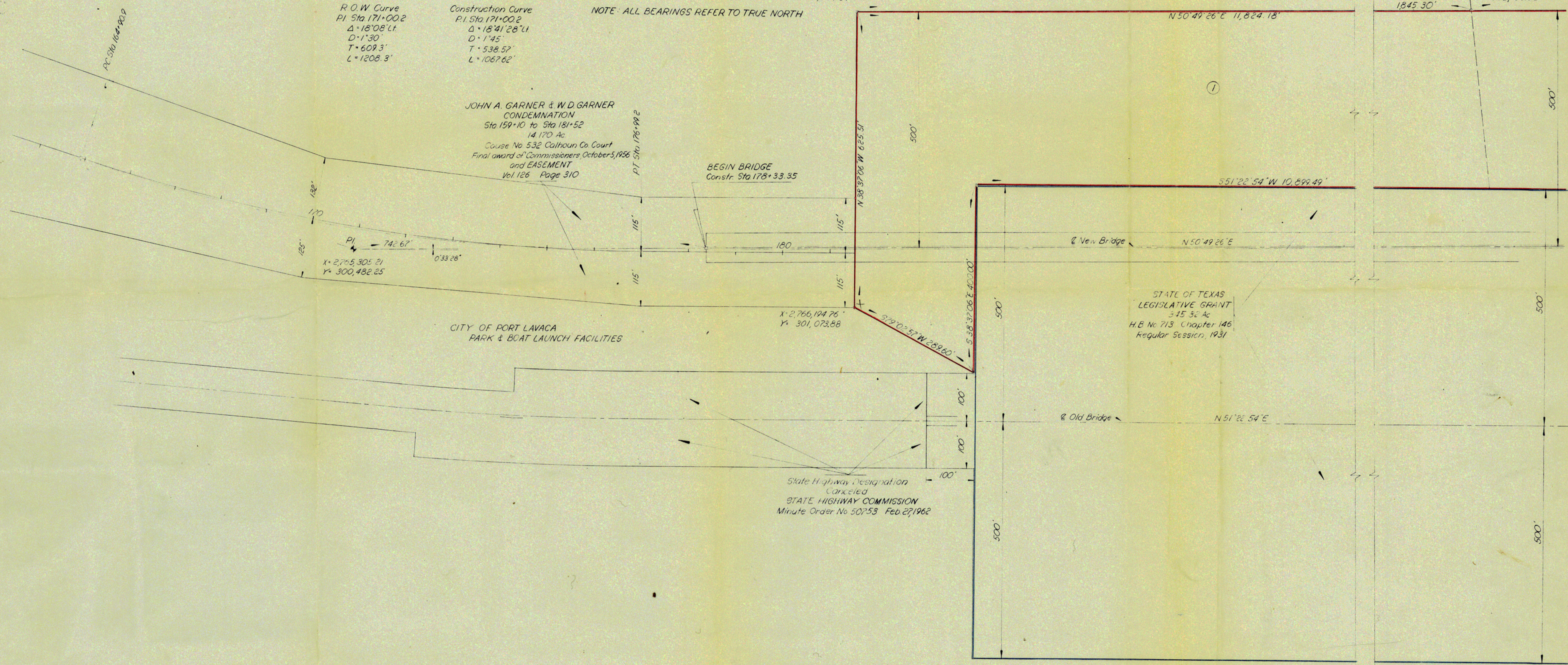
X=2,705,305.21
Y=300,482.25

CITY OF PORT LAVACA
PARK & BOAT LAUNCH FACILITIES

X=2,766,194.76
Y=301,073.88

State Highway Designation
Canceled
STATE HIGHWAY COMMISSION
Minute Order No 50753 Feb 27/1962

STATE OF TEXAS
LEGISLATIVE GRANT
3.45 5/8 Ac
H.B. No 713 Chapter 146
Regular Session, 1931



LAVACA BAY

FED. RD. DIV. NO.	STATE	FEDERAL PROJECT NO.	SHEET NO.
6	TEXAS		7
STATE DIST. NO.	COUNTY	CONT. SECT. JOB	HIGHWAY NO.
13	Calhoun	179 10	SH 35

