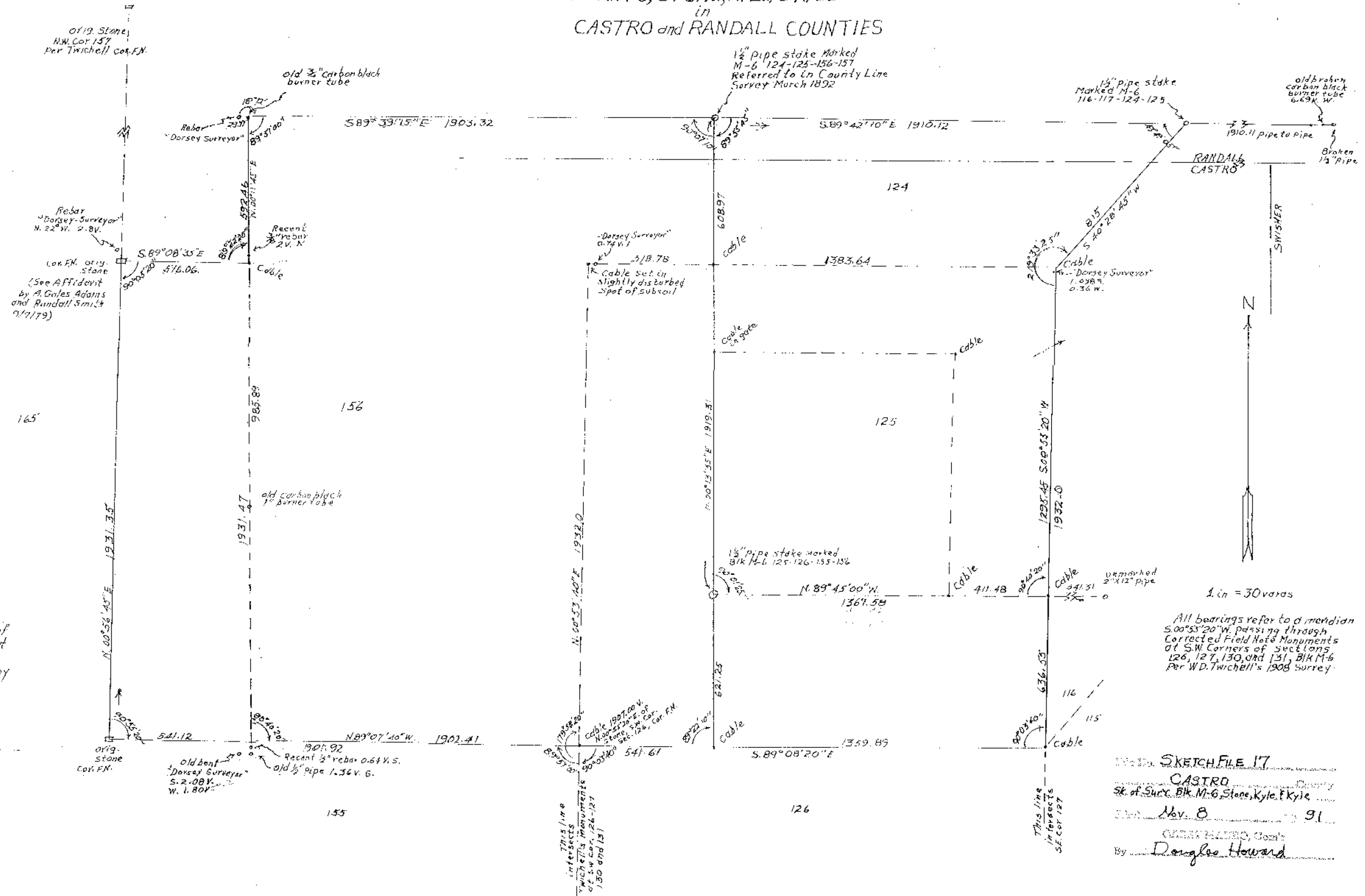


SKETCH of SURVEYS
in
BLK. M-6, STONE, KYLE, & KYLE
in
CASTRO and RANDALL COUNTIES



CERTIFICATE:

I, John H. Aldredge, County Surveyor of Castro County, do hereby Certify that this SKETCH was prepared from actual and accurate surveys made by me on the ground in 1979 and 1981, and that the monuments, angles, bearings and distances shown are correct within the standards prescribed by law.
Date: February 27, 1981

County Surveyor--Castro County

Castro Sk. File 17

1 in = 30 yards

All bearings refer to a meridian $S.00^{\circ}53'20''W$ passing through Corrected Field Note Monuments at S.W. Corners of sections 126, 127, 130, and 131, Blk M-6 Per W.D. Twichell's 1908 Survey.

SKETCH FILE 17
CASTRO
Sk. of Surv. Blk. M-6, Stone, Kyle, & Kyle
Nov 8 1981
By Douglas Howard

SKETCH FILE No 17
COUNTY Castro