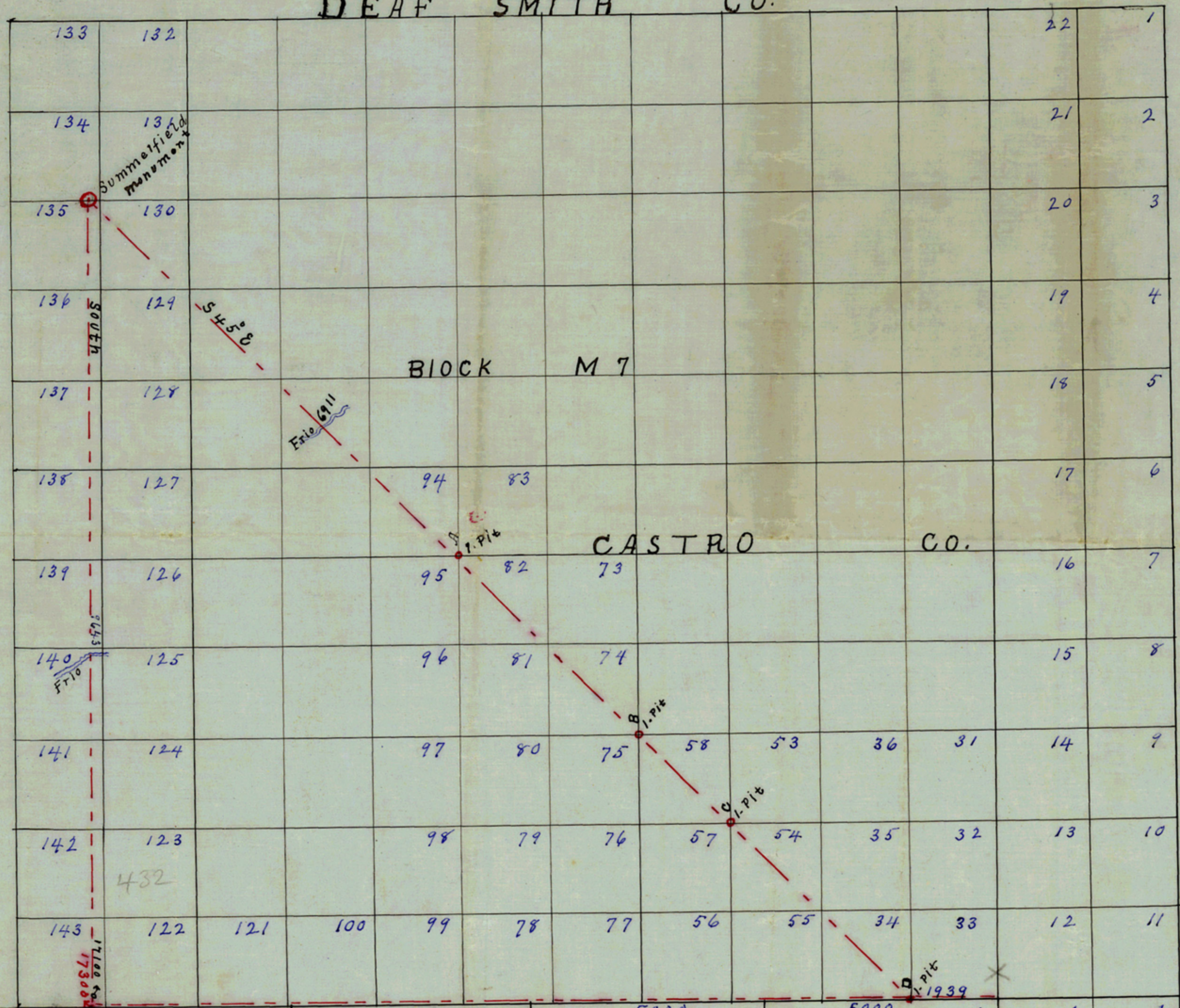


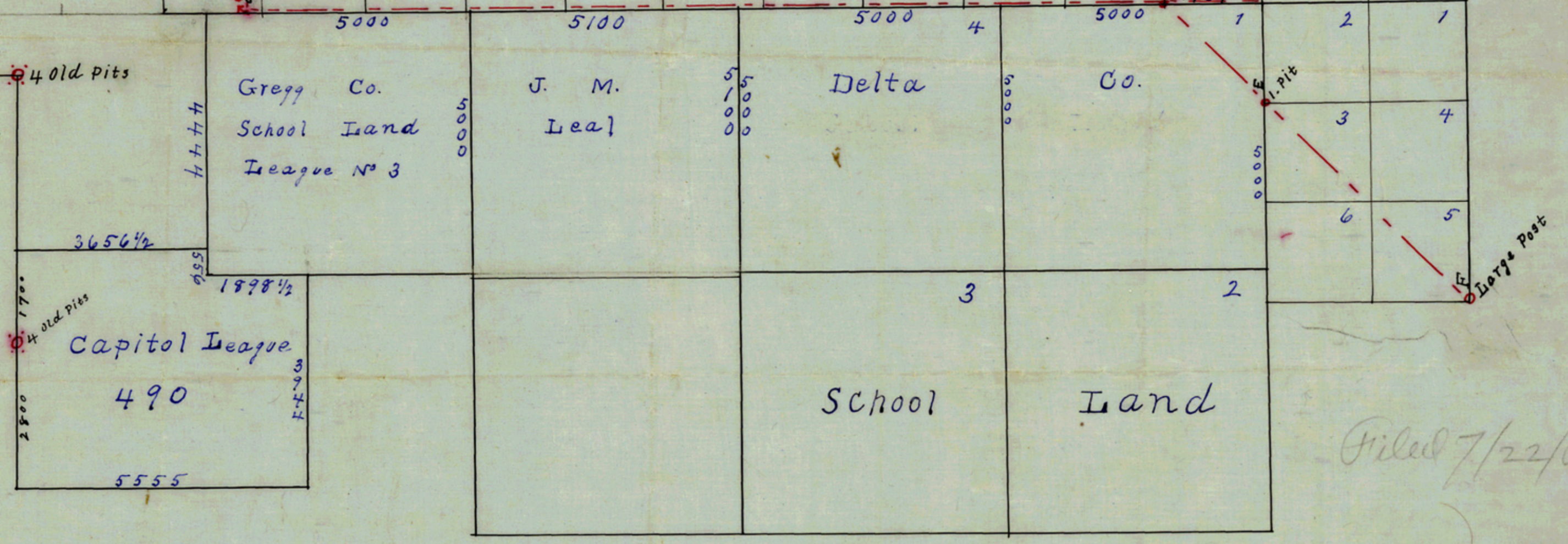
Castro Co. "A" sketch file
 M. W. Corroon & Co.
 27 N. 2nd St. St. Louis, Mo.
 Surveyors filed 7/22/03
 Connections in Blk. M-7

DEAF SMITH CO.



See sketch by
 Wm. B. Brown of this
 section of county

Filed July 22nd 1903.
 J. W. Corroon
 Commissioner



Filed 7/22/03

Continued -

That if the pits referred to are the footprints of the original surveyor, John Summerfield, then an angle of 45° from the line CD or DE, as they are practically the same - would determine the bearing or course of the B. line of said blk. I measured this angle and a line West 15100⁰⁰ from the N. & S. cor. of league 1 to a pit for N. W. cor. of the J. M. Leal survey, and dug a square pit for the N. & S. cor. of Gregg Co School league No 3. - 7470⁰⁰ north of a cor. said to have been made by W. D. Irishell for the N. & S. cor. of said league. Thence West 5000⁰⁰ to a Board arc post for the N. W. cor. of said league, 9812⁰⁰ North and 1/2⁰⁰ West of Irishell's cor. From said circular monument I measured a transit line South 17100⁰⁰ to a pit for the S. W. cor. of sec 122. and 17300⁰⁰ to my north line of Gregg Co. School League. I resurveyed Capitol league 490 on this basis -

Statement. From old circular monument 16 feet in diameter, I ran a ^{transit} line S 45 E. va. at starting 11-25 E. taking double back and foresights, at 6911⁰⁰ channel of Friso drain, at 10,857⁰⁰ passed a pit 19 1/2⁰⁰ to my left. (N. & S. of my line) at 16277⁰⁰ passed a pit 3 1/2⁰⁰ to my left, at 19,038⁰⁰ passed a pit 12 1/2⁰⁰ to my right, at 24589⁰⁰ passed a pit 38 3/4⁰⁰ to my right and under fence on north line of Delta Co. School league No 1. at 27382⁰⁰ a pit 5 1/2⁰⁰ to my right, and under fence on E. line of said league From this pit marked E on sketch, I could see a flagman at pit marked D. I projected this straight line passing through D and E, S 45 E 5528⁰⁰ from E, to a point 1714⁰⁰ S 45 W from a large post at cor. of fence for S. & E. cor. of sec 5 - Blk 10 A. I think. My object being the location of the B. boundary of Blk M 7. I assumed

A. D. Korroon,
 State Surveyor - July 20/03

See left hand cor