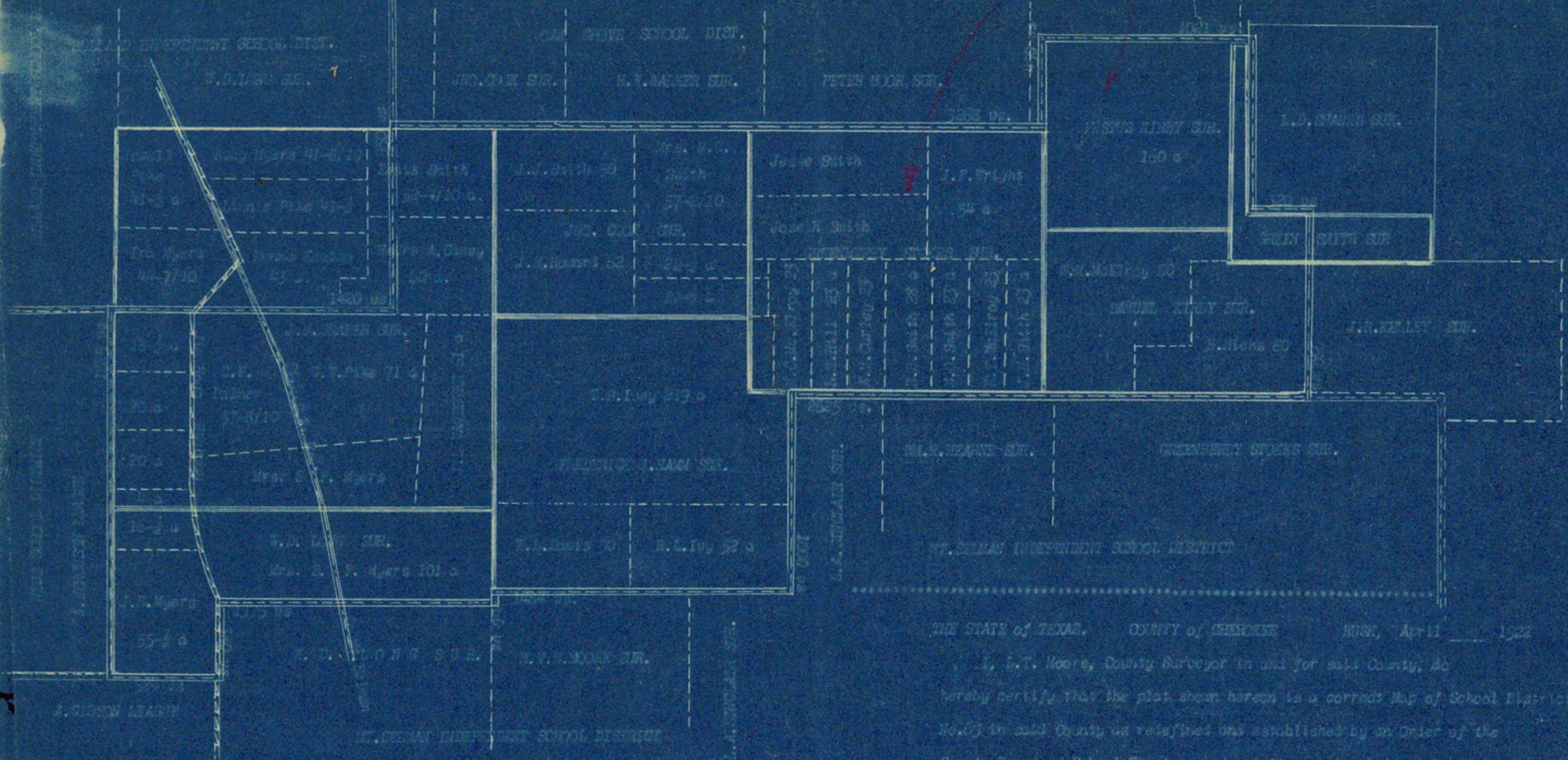


(Note position of
F. Kirby Sur and B. Stokes)



THE STATE of TEXAS. COUNTY of CHEROKEE. HASK, April 11 1922

I, L.T. Moore, County Surveyor in and for said County, do hereby certify that the plat shown hereon is a correct Map of School District No. 03 in said County as redefined and established by an Order of the County Board of School Trustees made at its meeting held at Hask, Texas on the _____ day of _____, 1922, and said order recorded in Record of School Districts Vol. I, on page _____ in said County.

Co. Surveyor, Cherokee Co., Texas.