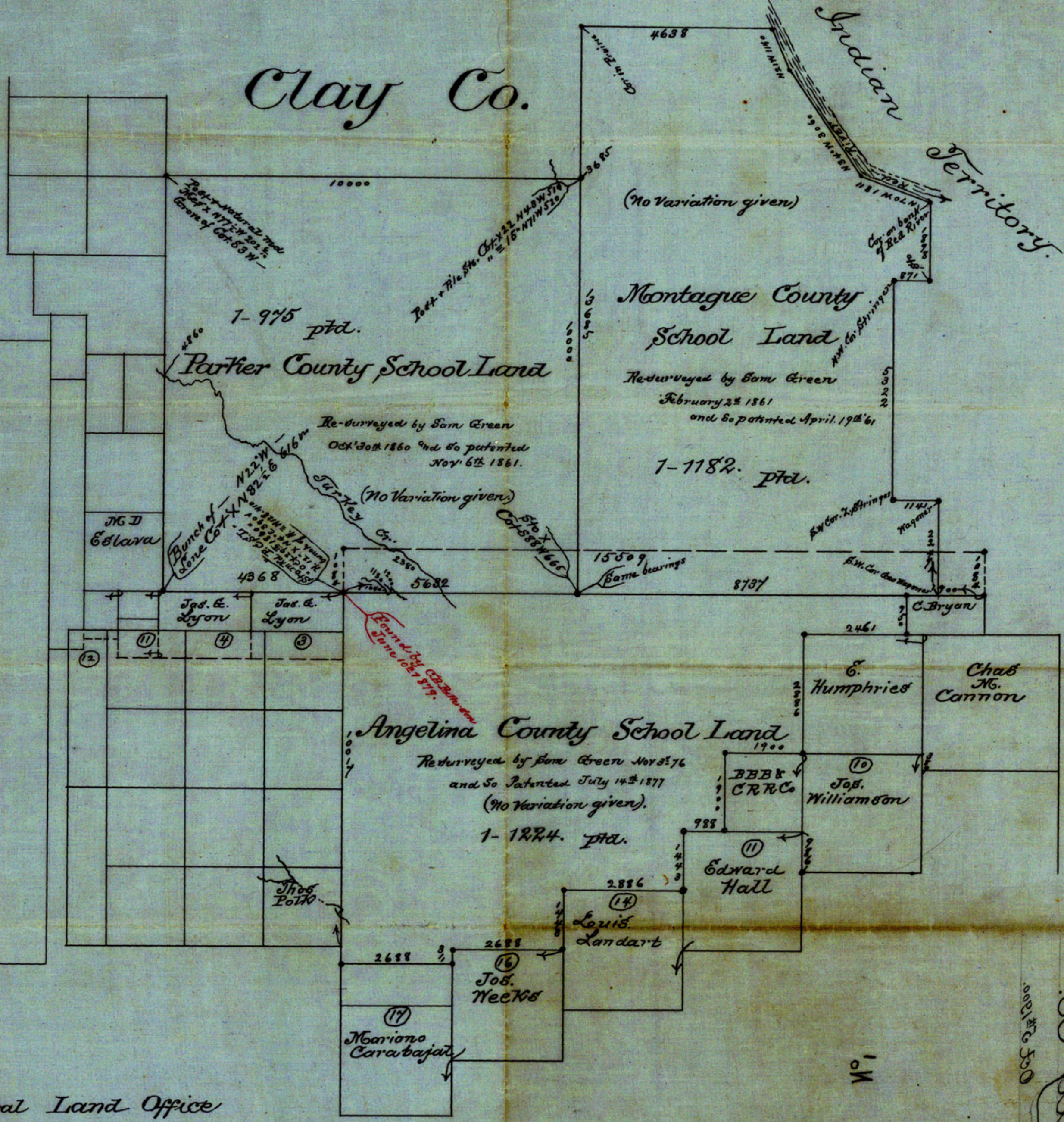


Clay Co.

Indian Territory



The above Sketch, compiled in Genl Land Office, shows the relative positions of the three surveys, Angelina Co School land 1-1224, Parker Co School land 1-975, and Montague Co School land 1-1182, as determined by a decision of the Supreme Court adopted Feb 24th Ad. 1891, for which see "Texas Reports" Vol 80, p. 392.

Oct 5th 1900.

J. F. Pinckney, Draftsman

GREAT BRITAIN



No

SKETCH FILE NO. 27
COUNTY Clay

COMPTON # 11089