

1978

Part 5 of 5 parts
By BOB ARMSTRONG, Conf.
119
SK F. Form D-1948
Clog
File No. AS
Sketch AS

Cherokee County School Land



R. L. Rattle Co.
Day Land

Day Land & Cattle Co.

Rains County School Land

D.

D.

Bweeney

H. L. di Cassilar

A. F. Bweeney

23

24

28

25

27

47

Rains County School Land

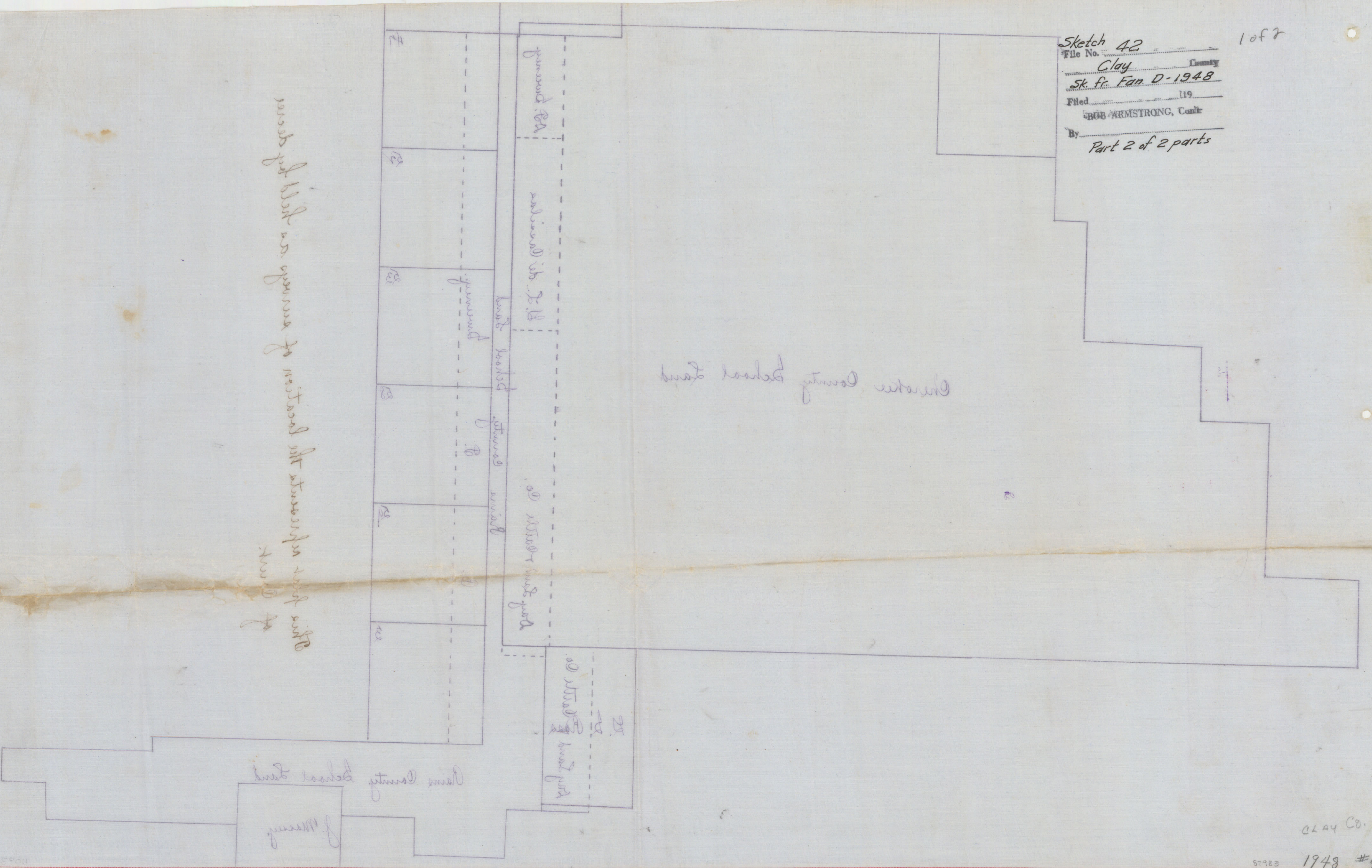
J. Massey

This plat represents the location of surveys as held by decree of Court.

1948

1948

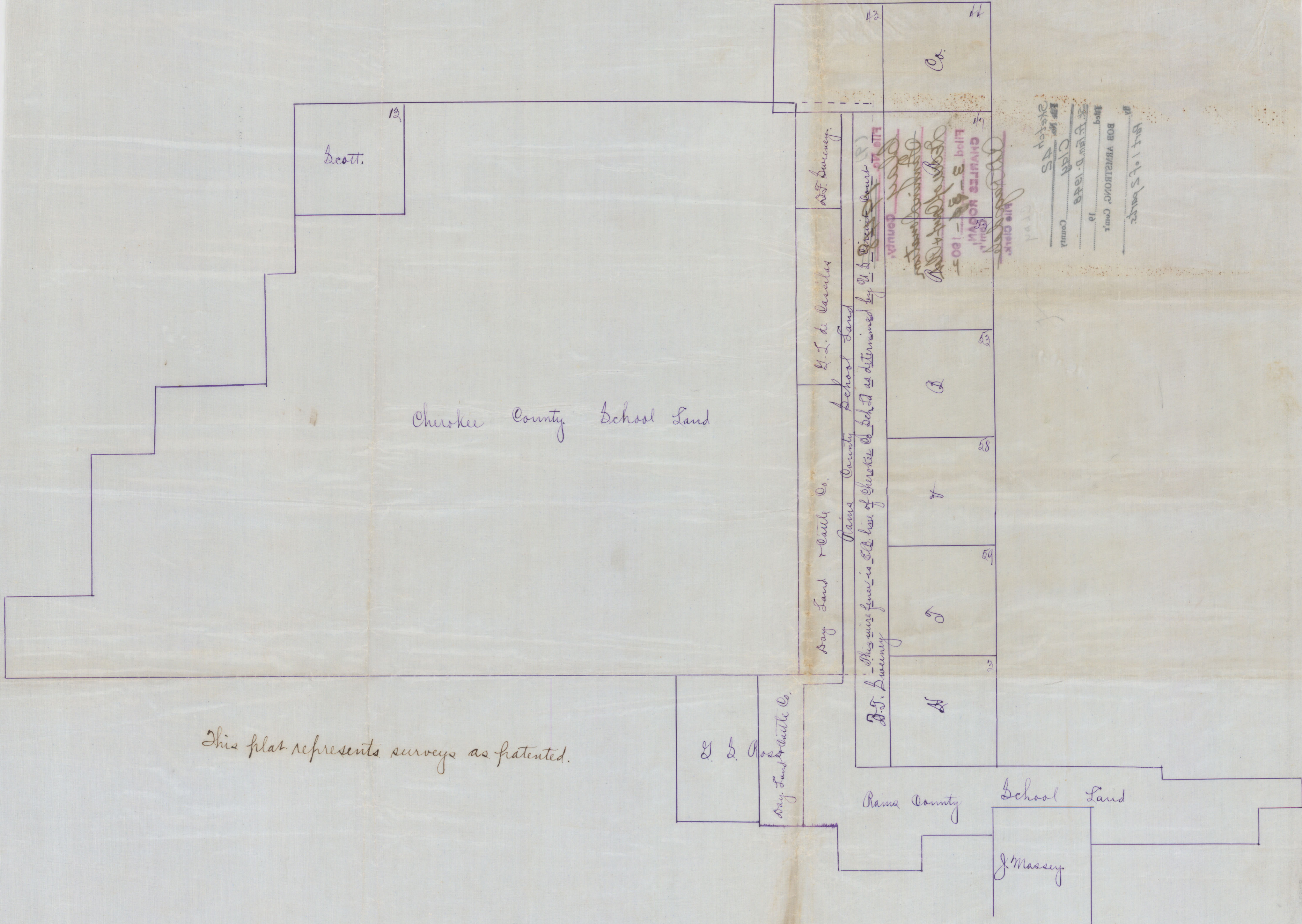
Sketch 42
 File No. _____
 Clay County
 Sk. fr. Fan. D-1948
 Filed _____ 19____
 BOB ARMSTRONG, Comr.
 By _____
 Part 2 of 2 parts



Government RA
 Government 2.18
 Government 2.19
 Government 2.20
 Government 2.21
 Government 2.22
 Government 2.23
 Government 2.24
 Government 2.25
 Government 2.26
 Government 2.27
 Government 2.28
 Government 2.29
 Government 2.30
 Government 2.31
 Government 2.32
 Government 2.33
 Government 2.34
 Government 2.35
 Government 2.36
 Government 2.37
 Government 2.38
 Government 2.39
 Government 2.40

Clay County School Land

Clay County School Land
 J. Armstrong



Scott.

13

Cherokee County School Land

D. S. Lweeney.

G. I. de Carulas

Day Land & Cattle Co.

Rains County School Land

D. S. Lweeney - This survey is in the hands of Cherokee Co. Sch. Ld. as determined by G. I. de Carulas

13

Co.

14

55

58

59

60

A

T

S

B

15

This plat represents surveys as patented.

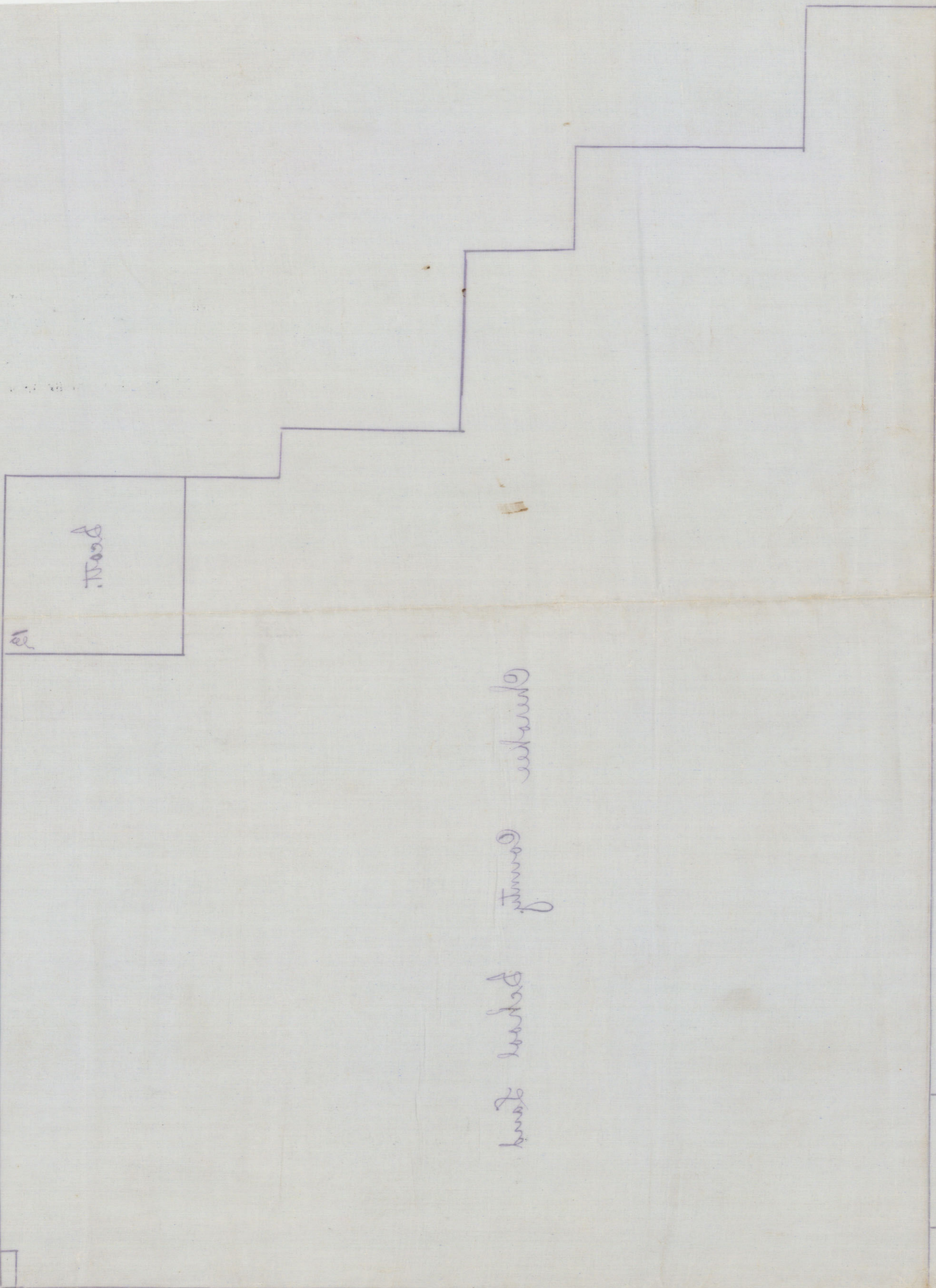
G. L. Ross

Day Land & Cattle Co.

Rains County School Land

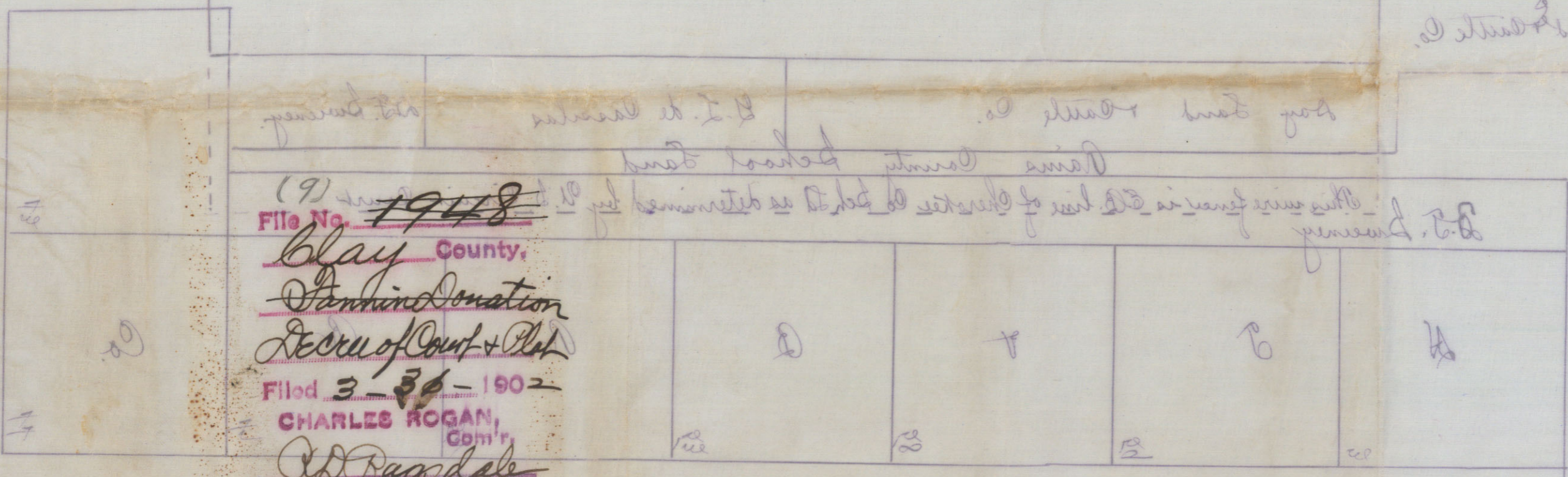
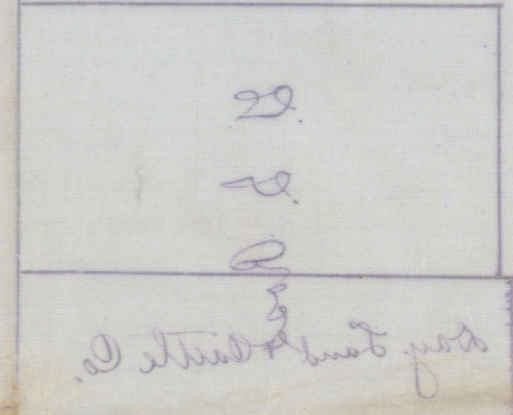
J. Massey

Filed
 Charles Ross
 Clerk
 1898
 County
 13
 Bob Armstrong, Comr.
 Part 1 of 5 pages
 1898



This area represents a portion of the land as shown on the plat.

Robert Jones
 County
 James



(9)
 File No. 1948
 Clay County,
 Partition
 Sec. of Court & Plat
 Filed 3-30-1902
 CHARLES ROGAN,
 Com'r.
 Ed. Ragdale
 File Clerk.

Sketch 42
 File No. Clay County
 Sk. fr. File D-1948
 Filed 19
 BOB ARMSTRONG, Com'r
 By Part 1 of 2 parts.