

This sketch represents surveys as patented

Cherokee County School Land

beath

13.

G. S.

Day Land & Cattle Co.

Day Land & Cattle Co.

L. L. de Cassilas

D. F. Sweeney

Rains County School Land

This wire fence is E. B. line of Cherokee Co. Sch. Ld. as determined by U. S. Circuit Court
B. F. Sweeney

Rains County School Land

H

J

K

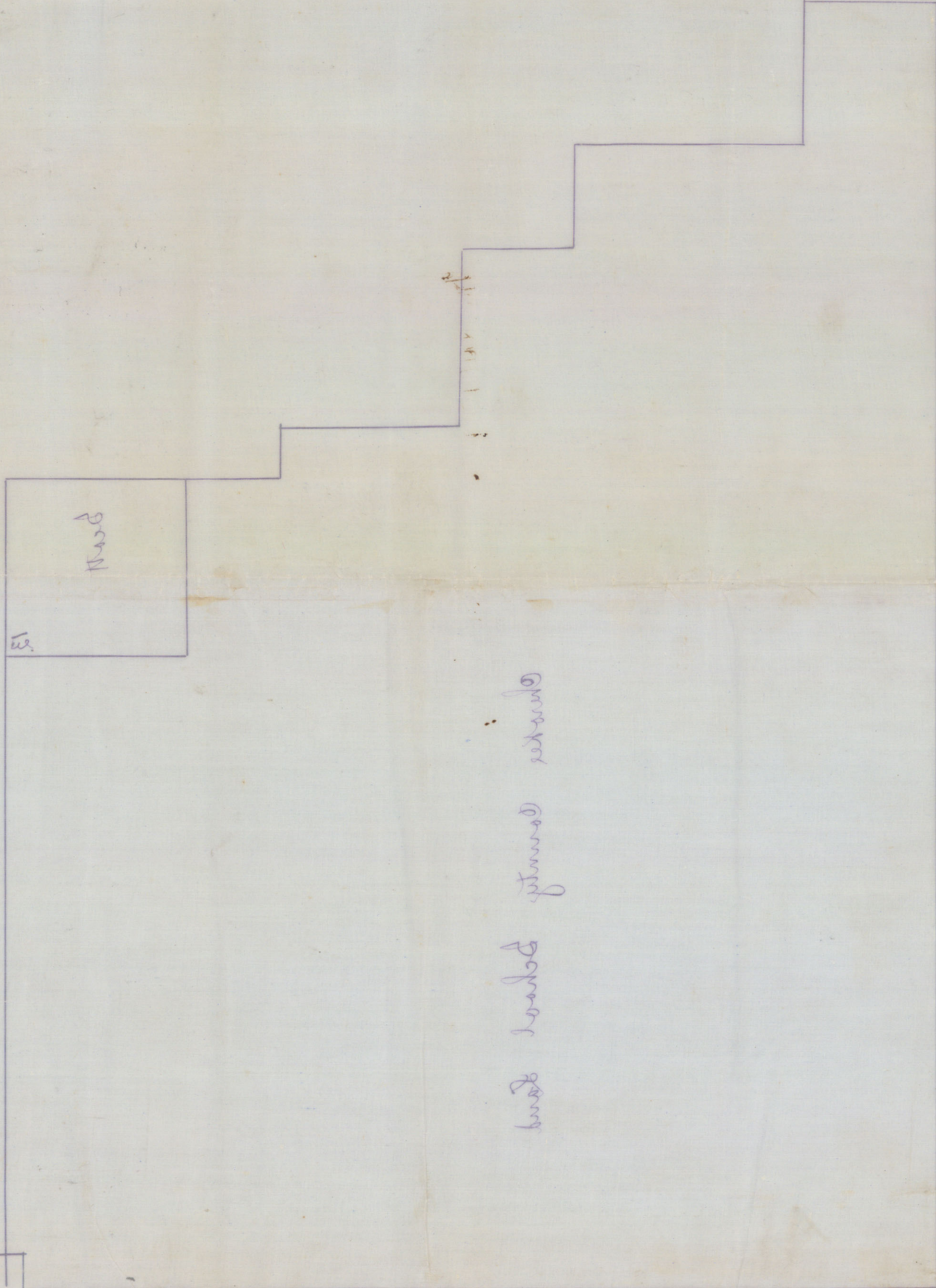
L

M

FILED
3-31-1902
CHARLES ROGAN
County Clerk
Cherokee County

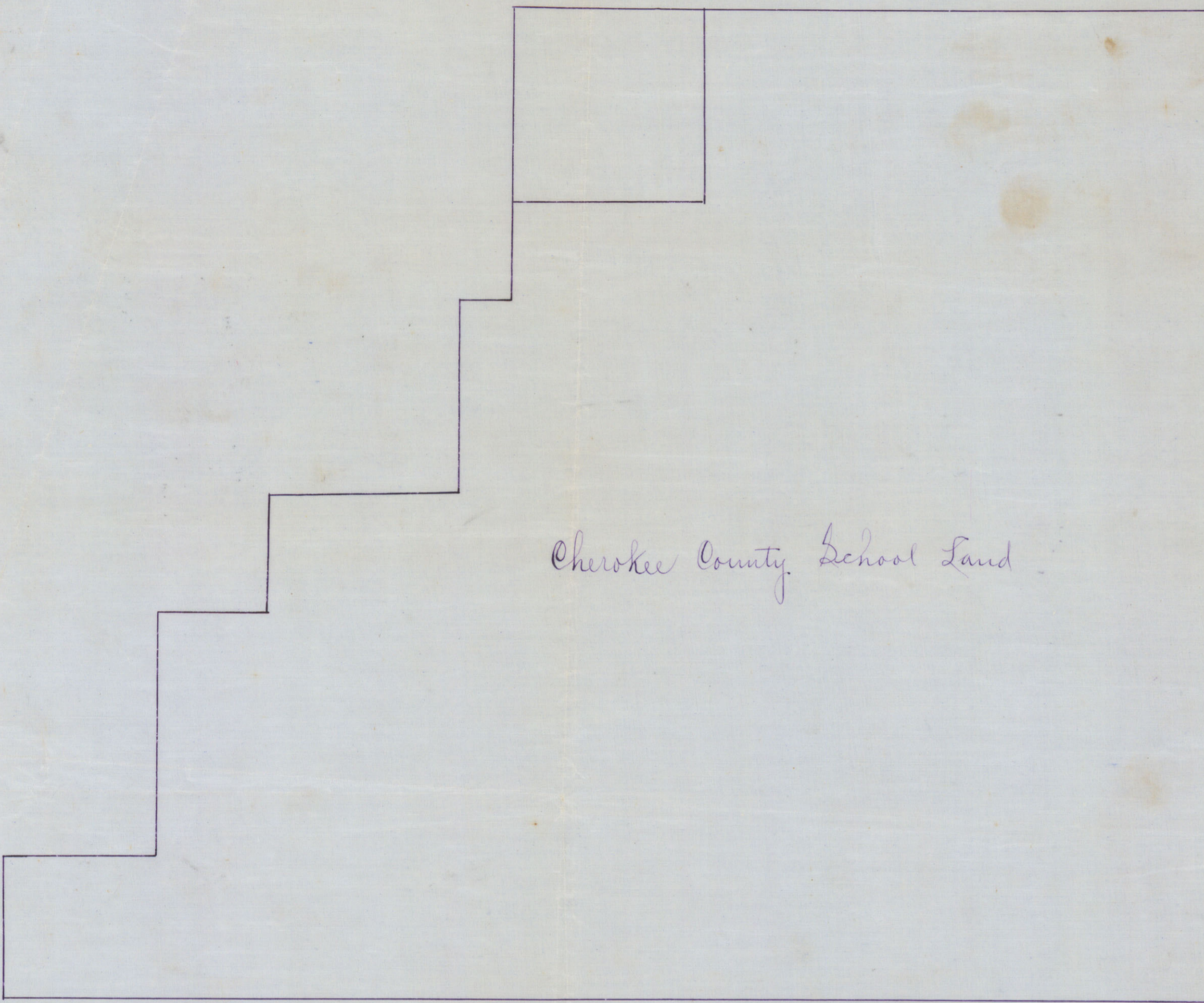
J. Mearns

Part 1 of 3 parts
BOB ARMSTRONG, Com'r
Filed
29
24 Feb 9-1947
Clay
County
File No. 43
Sketch
Clay Co.



File No. 1947
 Clay County,
 Admin. Division
 Deed Plat
 Filed 3-31-1902
 CHARLES ROGAN,
 Com'r.
 Ed. Rogdal
 File Clerk.

Clay Co.
 Sketch 43
 File No. _____
 Clay County
 Sk. fr. Fam. D-1947
 Filed _____ 19____
 BOB ARMSTRONG, Com'r
 By _____
 Part 1 of 3 parts



Cherokee County School Land

		12	44
			Co.
			47
			R.
			52
			R.
			53
			S.
			58
			F
			8
			59
			Q
			9
			2
			4

D. P. Swiney

H. de Cavilas

Ray Land & Cattle Co.

Ray Land & Cattle Co.

Rains County School Land

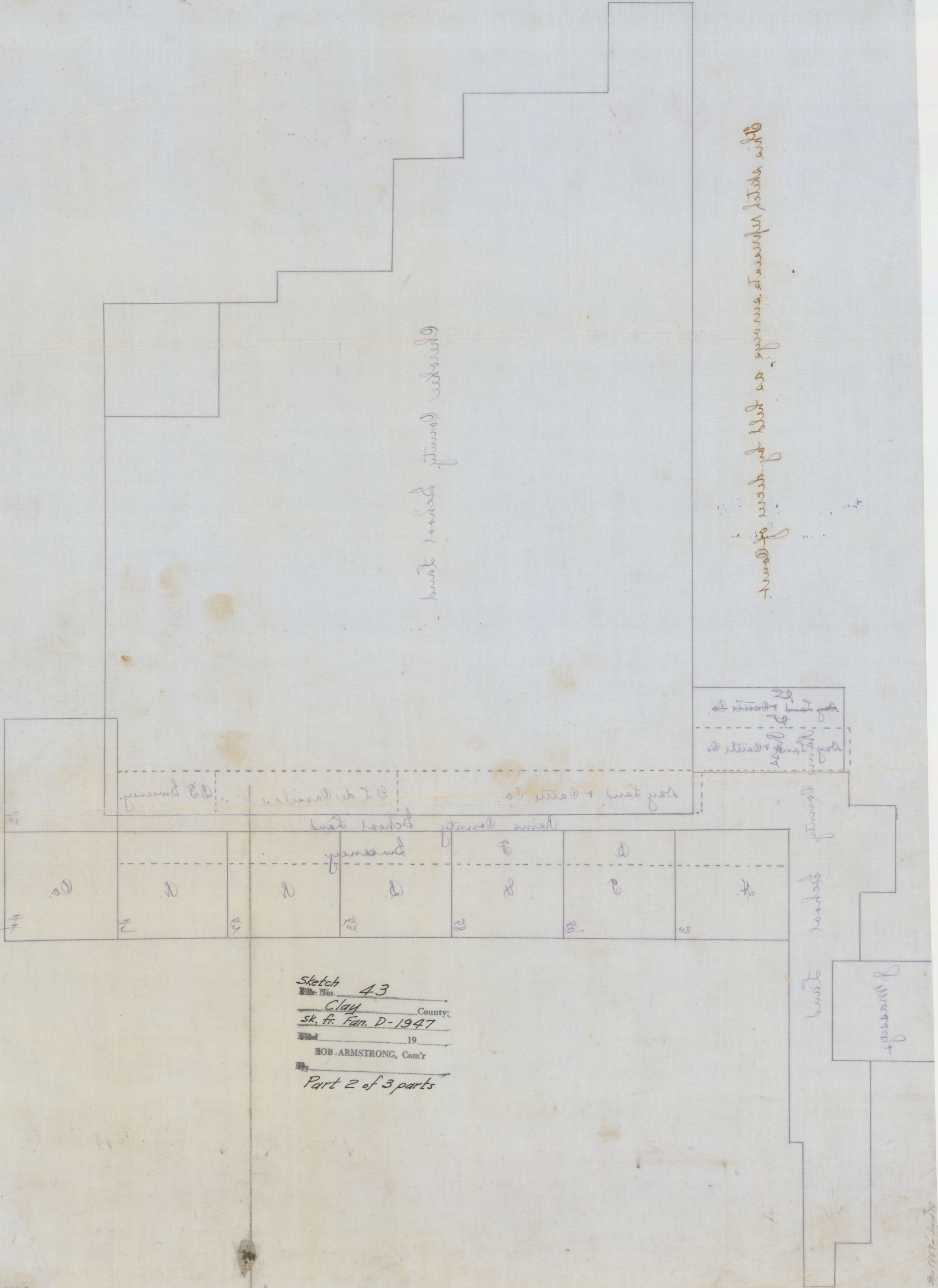
Swiney

Rains County School Land

J. Massey

Notary Public
 27
 1901
 1901
 1901
 1901
 BOB ARMSTRONG, Comr.
 19
 1901
 1901
 1901
 1901

This sketch represents surveys as held by decree of Court.



Barren County
Barren County School Land

Barren County
Barren County School Land

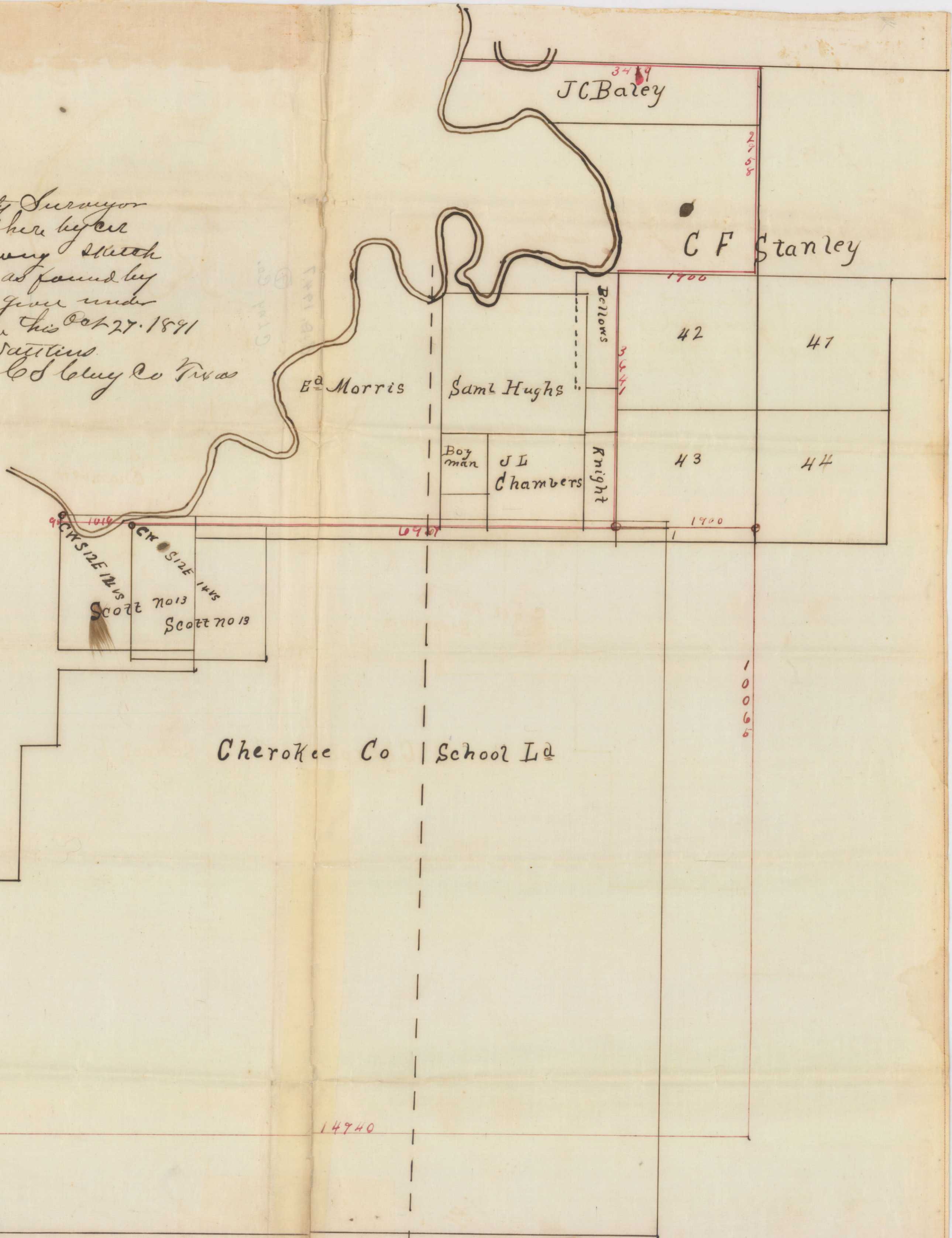
Barren County
Barren County School Land

Barren County
Barren County School Land

Sketch 43
 File No. 43
 Clay County
 sk. fr. Feb. D-1947
 Filed 19
 HOB. ARMSTRONG, Com'r
 Part 2 of 3 parts

I R W Wattless County Surveyor
of Clay County do hereby
to be had the following sketch
represent the survey as found by
me and the ground given under
my hand as officer this Oct 27. 1891
R W Wattless
Clay Co Treas

Bob Vignellomb's Cont.
Elmer
C. A. D. W. F. A. K.
C. A. D. W. F. A. K.
C. A. D. W. F. A. K.



Clay Co. Treas. #43
8073



Charles Co. 200000

Knight

Bellevue

Pot

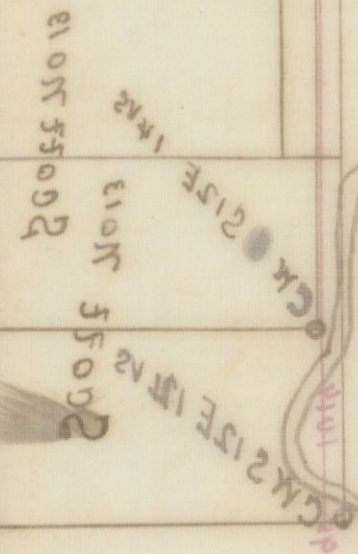
Horse

C.F. 200000

JCBased

A.B. 1947

Clay Co.



Handwritten notes:
 The above described land is situated in the
 north west corner of section 43
 township 12 N. range 10 W. of the
 6th P.M. in Clay County, Missouri.
 It is bounded on the north by the
 land of the State of Missouri, on the
 east by the land of the State of
 Missouri, on the south by the
 land of the State of Missouri, and
 on the west by the land of the
 State of Missouri.

Sketch
 File No. 43
Clay County
 Sk. fr. Far. D-1947
 Filed 19
BOB ARMSTRONG, Com'r
 By Part 3 of 3 parts

Clay Co. SK File #43