

Cherokee County School Land

12
Scott.

This sketch represents surveys as patented.

W.F. Swiney

H. L. de Casselas

Ray Land + Cattle Co.

Rains Co School Land
This reference is to line of Cherokee Co. Sch. L. as determined by U.S. Circuit Court.

B.F. Swiney
Rayland Cattle Co.

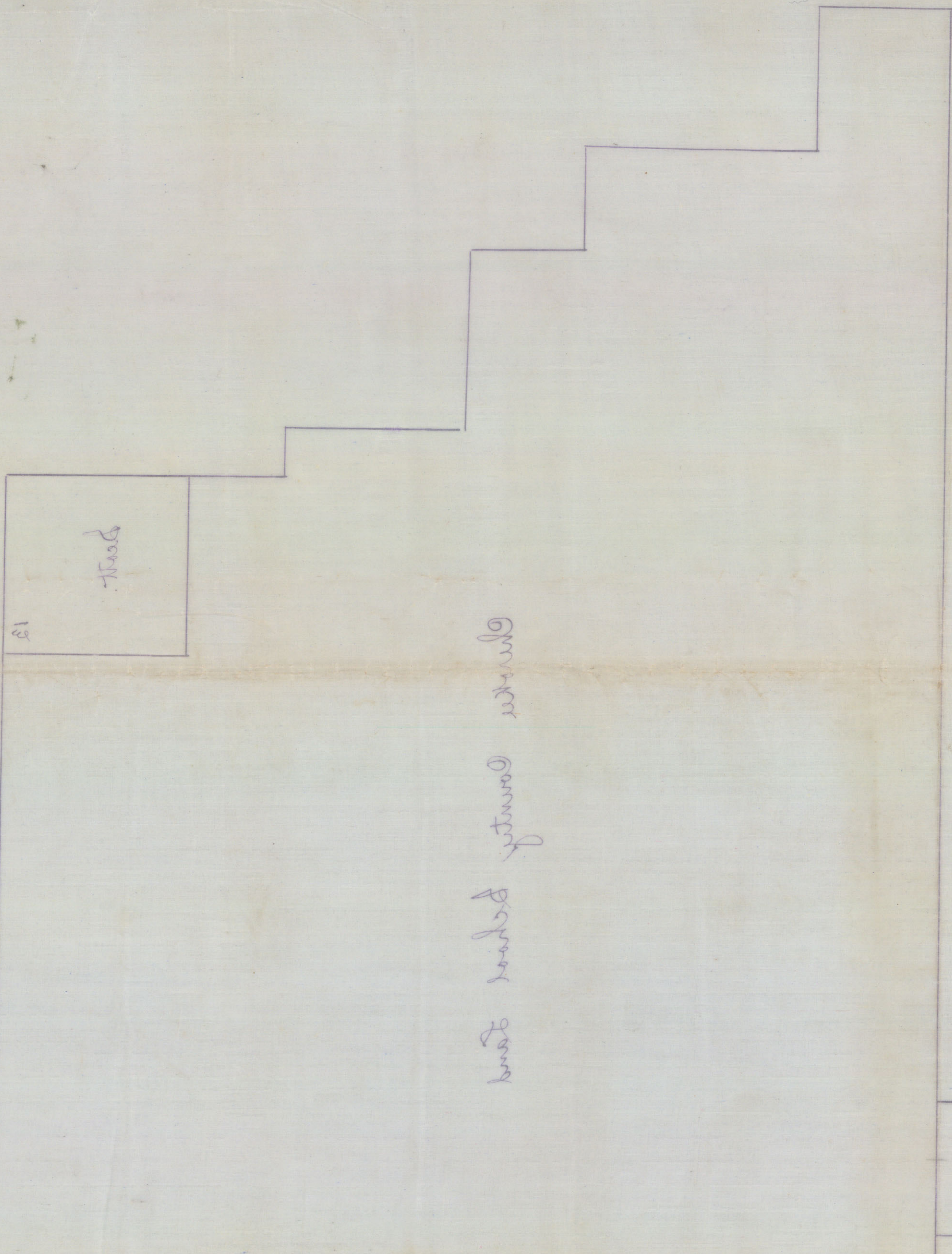
Rains County School Land

J. Massey

FILE NO. 3-3-1-1805
CHARLES MOORE
FILE CLERK
CHEROKEE COUNTY

By _____
BOB ARMSTRONG, Comr.
Filed _____
at _____
Cherokee County
File No. 44
Sketch

Cherokee County School Land
File No. 44
1875



detached as appears attached hereto with

Quarter County School Land

Road

1/2 of Section 20
 1/2 of Section 21
 1/2 of Section 22
 1/2 of Section 23
 1/2 of Section 24
 1/2 of Section 25
 1/2 of Section 26
 1/2 of Section 27
 1/2 of Section 28
 1/2 of Section 29
 1/2 of Section 30
 1/2 of Section 31
 1/2 of Section 32
 1/2 of Section 33
 1/2 of Section 34
 1/2 of Section 35
 1/2 of Section 36
 1/2 of Section 37
 1/2 of Section 38
 1/2 of Section 39
 1/2 of Section 40

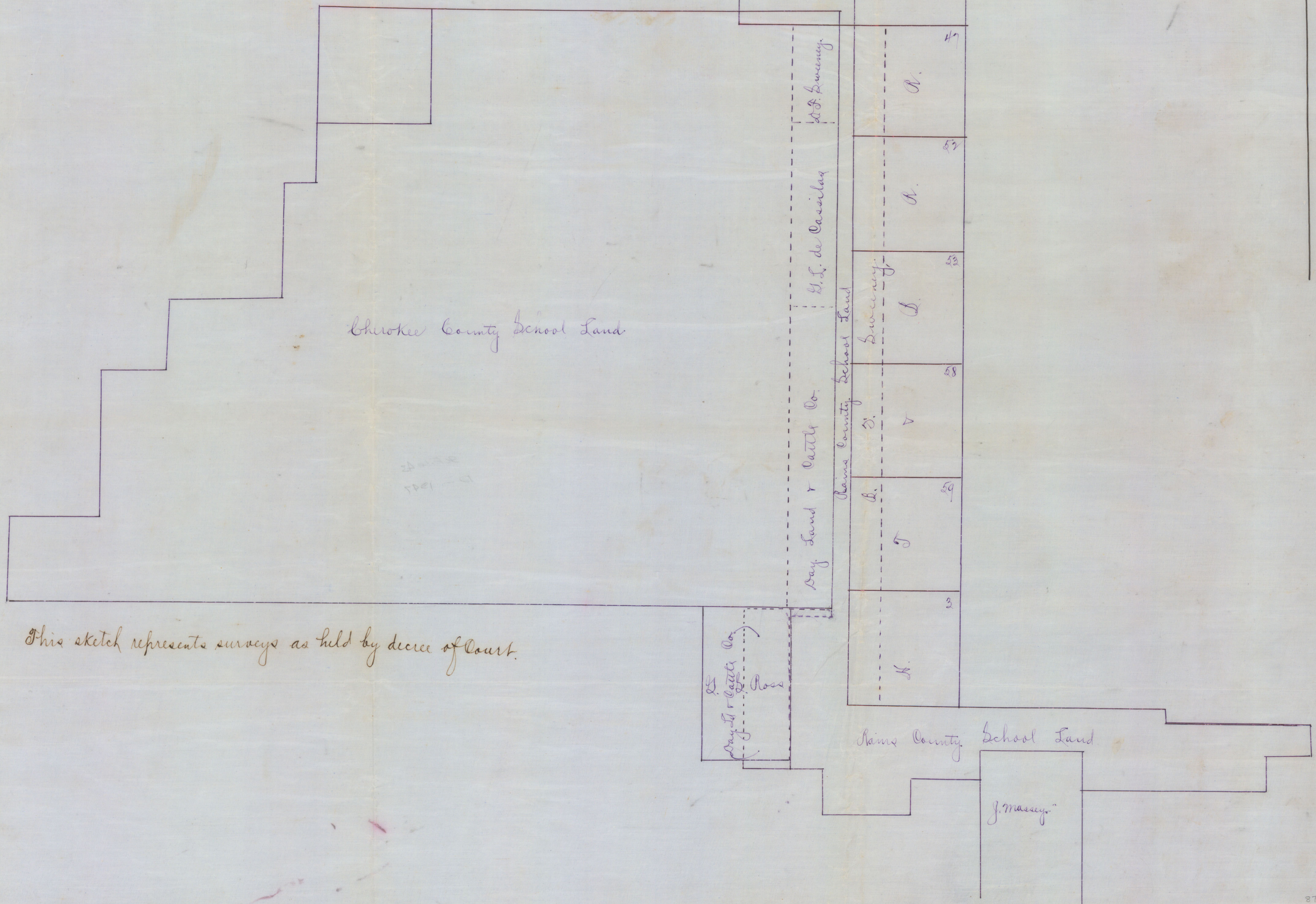
File No. 1970
 Clay County,
 Purnin Donation
 Decree of Court & Plat
 Filed 3-31-1902
 CHARLES ROGAN,
 Com'r
 C. P. Ragdale
 File Clerks

Sketch
 File No. 44
 Clay County
 Plat of Ct. Decree for Feb. 12, 1970
 Filed _____ 19____
 BOB ARMSTRONG, Com'r
 By _____

1/2 of Section 20
 1/2 of Section 21
 1/2 of Section 22
 1/2 of Section 23
 1/2 of Section 24
 1/2 of Section 25
 1/2 of Section 26
 1/2 of Section 27
 1/2 of Section 28
 1/2 of Section 29
 1/2 of Section 30
 1/2 of Section 31
 1/2 of Section 32
 1/2 of Section 33
 1/2 of Section 34
 1/2 of Section 35
 1/2 of Section 36
 1/2 of Section 37
 1/2 of Section 38
 1/2 of Section 39
 1/2 of Section 40

4705 14 # 9/17 .22 .02 1/10

1879



Cherokee County School Land

W.B. Lawrence

H.L. de Cassida

Rains County School Land

W.B. Lawrence

H.

H.

5

H.

Rains County School Land

J. Massey

This sketch represents surveys as held by decree of Court.

W.B. Lawrence & J. Ross