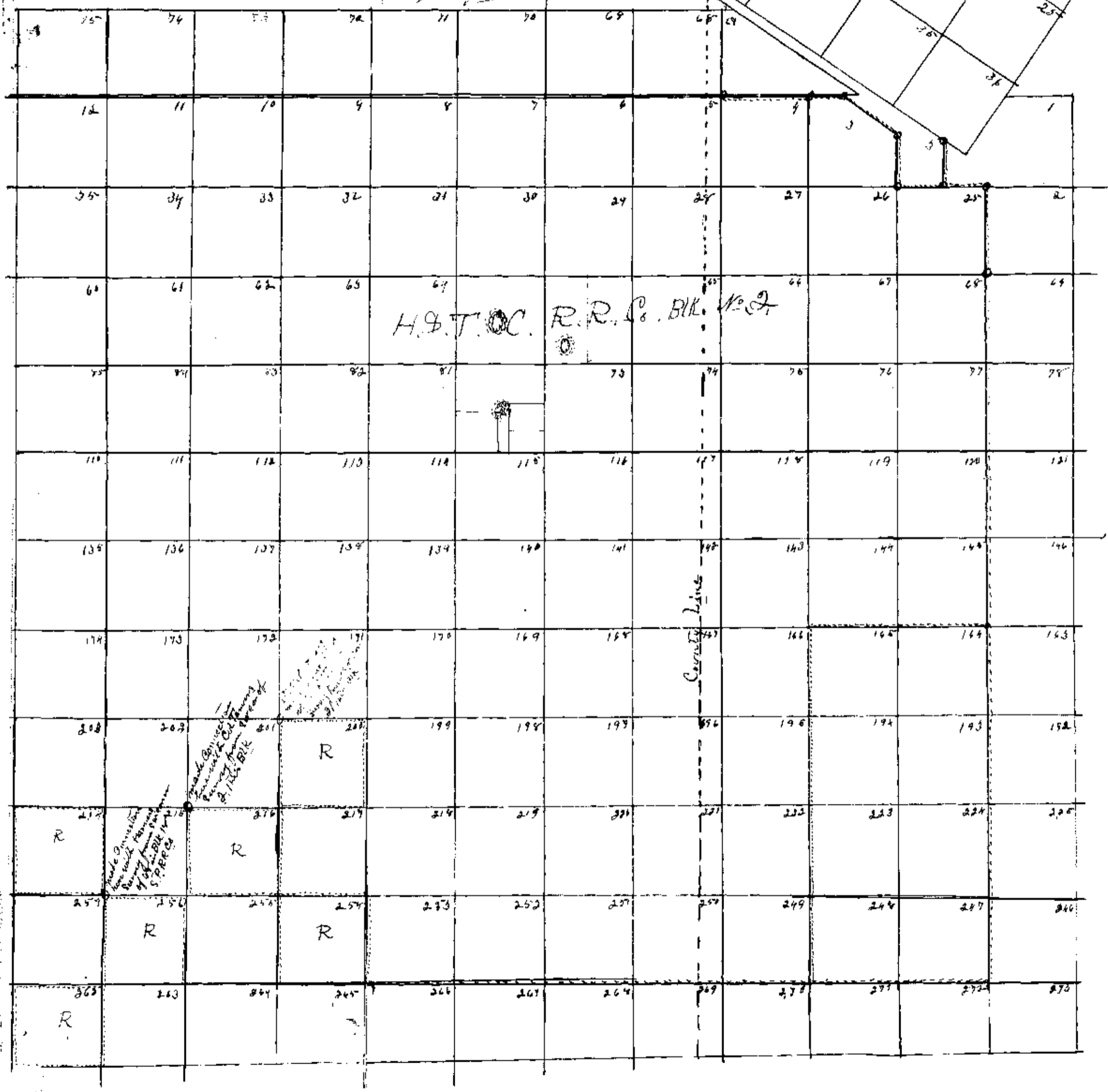
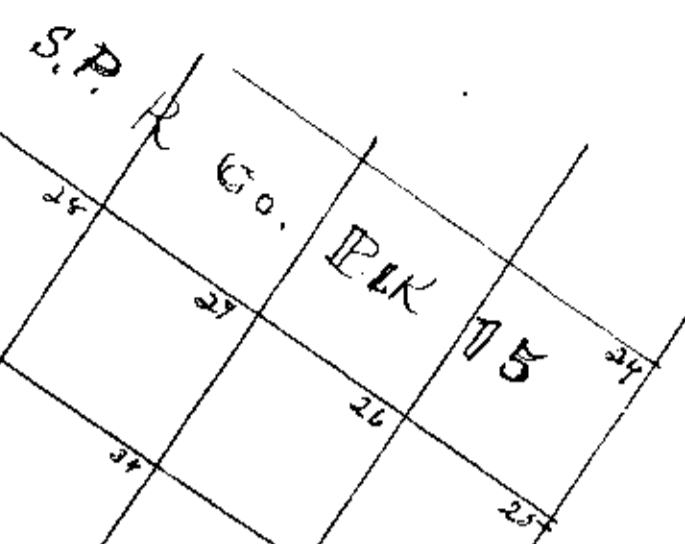


Filed in Genl Ld Office
July 1st 1902

Blk 18
The dotted lines show how survey was made
and all corners marked there were positively
identified on the ground I failed to find the
N.W. corner of 271 and believe the witness trees
have been destroyed
J. J. Dale
Surveyor



S.W. 1/4 Sec. 17-18

3707

Sterling City July 28th 1902
Hon Charles Rogan
Austin Texas

Dear Sir I herewith
enclose you plot of the survey I made for
Judge A. D. Renshaw. The dotted lines from
Corner of section No. 1, this Block will show you
where I ran for connection on 271. This corner I
failed to find and believe the witnesses have been
cut. I also ran from S.E. corner of 68 in Blk. 18
S.P. Co to the corner of sec in Block No. 2, and
found all the corners on that line well established
at the N.W. corner of section 216 I made connection with
W. B. Towers survey from S.E. corner of section No. 2, this Block
and at S.E. corner of section No. 214 I made connection
with Mr. Harman's survey made from the
N.W. cor of this Block and S.W. cor 68 in Block
18, S.P.R.R. Co survey and at both connections
our work checked up well for the distance
we had run &c

Respectfully
J. J. Hall
Dept Surveyor

"B" Lake Co Sketches
- 17 -

Filed in Geol. Land
Office
8/1/1902 Wres

Counter 18607