

E. PUETT, *Sup*
COUNTY SURVEYOR
OF COKE COUNTY.

REC. A:
\$ 7

APR 28 1923

J. D. HEDICK,
RECEIVER

REFER
APR 28 1923
Pomo 4
REMITTANCE CORRECT

ROBERT LEE, TEXAS, 4/26 1923

Mr. J. T. Robinson Land Com.

Austin Tex

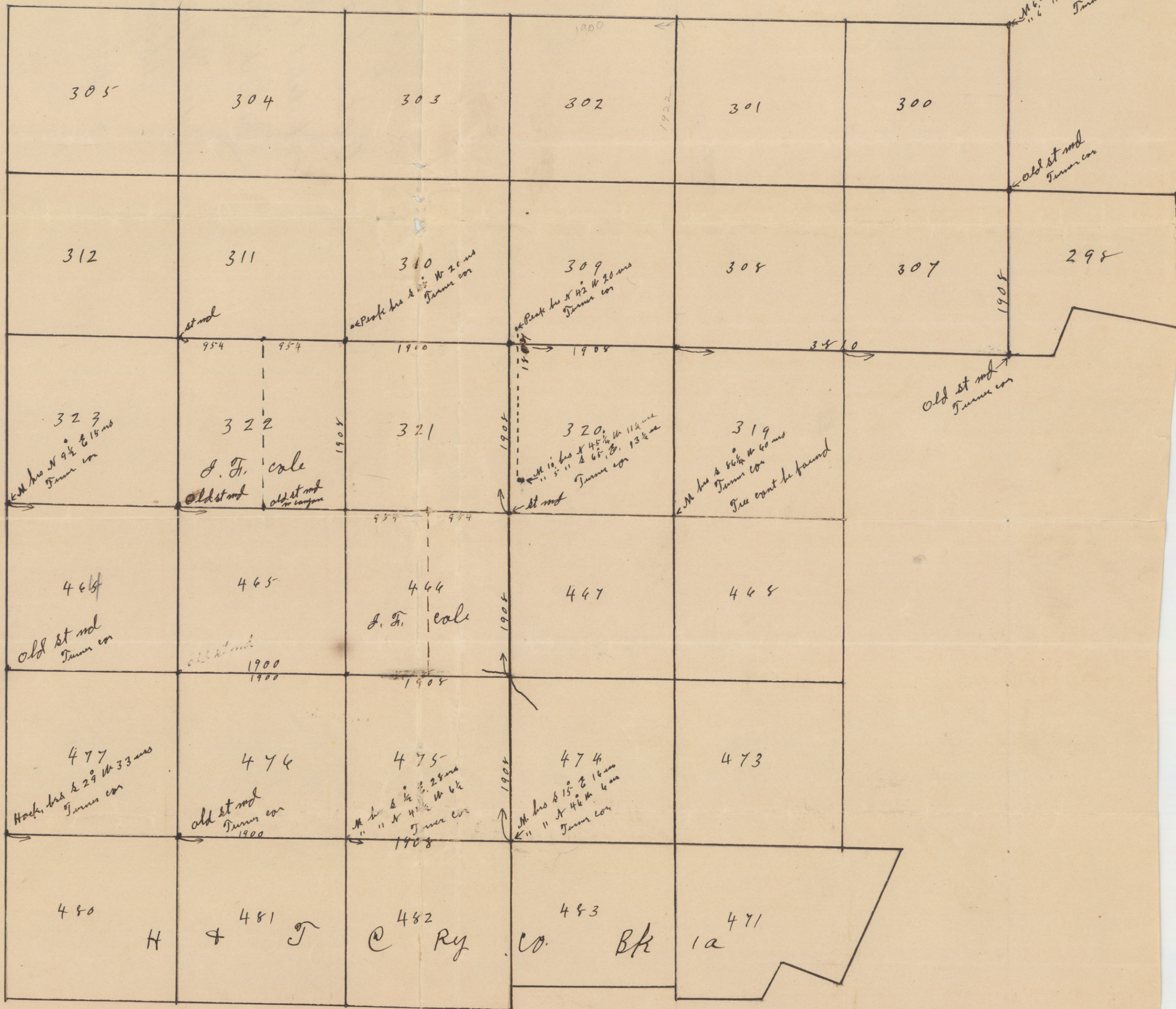
Find enclosed 4 sets of Field to East + West half of
Survey # 322 and East + West $\frac{1}{2}$ of survey # 466 H + T C Ry. Co.
Bk 1.A in Coke Co. These surveys numbers, 466-467-320-321-322
has confused the owners of said land the way Steven Turner
has built the corners. seems to be only 3 corners out of
Place which is S.W. corner of 320 and N.W. corner 320 and N.W.
cor of 321. The S.W. corner of 320 is 412ms North and 127ms. East
from where it should be the N.W. corner of Sur # 320 is 317ms North
and 127ms. E. from where it should be ^{shown by sketch} according to his work on both
sides of these surveys (I mean Turner) I began at the S.W. corner
of 298 which is a Turner corner (see sketch) and surveyed West
5718ms I also began at the S.W. corner of Sur # 474 (see sketch) which
is a Turner corner and surveyed North 5724ms see sketch
I also began at S.W. corner 323 which is a Turner cor and
surveyed and flagged it through Part of this line is so rough that
it could not be chained with any accuracy. I have tested these 3 corners
mentioned above from his own corners corners East + West + South
of the said 3 corners and find they are wrong. he must have got drunk
yours Truly T. E. Puett Deputy county Surveyor
Coke county Tex

A

1111

RECEIVED AS STATED

750
RECEIVED
APR 26 1923



J. T. E. Pruett Deputy county surveyor of Lake Co. Tex do hereby certify
 That this is a True and correct sketch of these surveys as I found them
 on the ground surveyed by me April the 18 and 19 - 1923
 the S.W. cor of survey # 320 BK 10 and N.W. cor of survey # 320 and N.W. corner of survey # 321
 is out of line with all the rest of his work on both sides as shown by sketch
 (I mean Turners work) the above mentioned corners dont tally out. the S.W. corner
 of survey # 320 where Turner put it is 412ms North and 127ms E. from where it should be

J. T. E. Pruett Deputy county surveyor Lake Co. Tex

This 26 day of April 1923

Coke Co. sk. File # 22

-22-
Coke Co,
Sketch File -
<in Box A1.>
Filed 4/28/1923
J. T. Robinson
Comm.
Per J. H. Austin
A