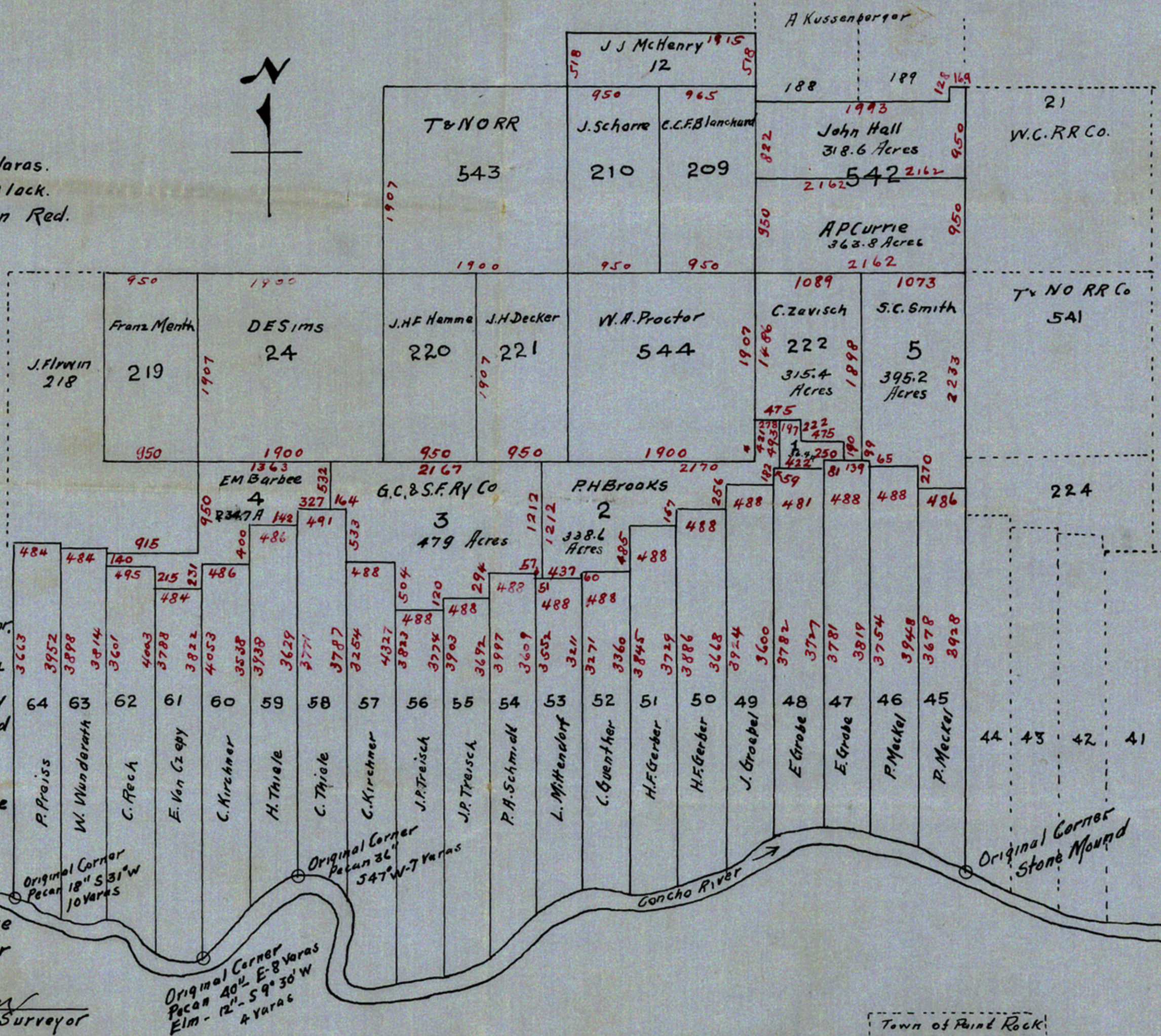


PLAT  
OF  
D.E. Sims' Ranch  
Concho County, Texas.  
Scale - 1 Inch = 1000 Varas.  
Survey Numbers in Black.  
All distances in Varas in Red.



I, Thos. F. Jackson  
a Licensed State Land Surveyor,  
do hereby certify that this  
Plat is a true and correct  
representation of a Survey  
made by me on the ground  
of the D.E. Sims Ranch  
in Concho County, Texas.  
Said Survey being made  
during the month of  
August, AD 1909.

Given under my  
Hand and Seal of Office  
This 19<sup>th</sup> Day of October  
A.D. 1926

*Thos. F. Jackson*  
Licensed State Land Surveyor