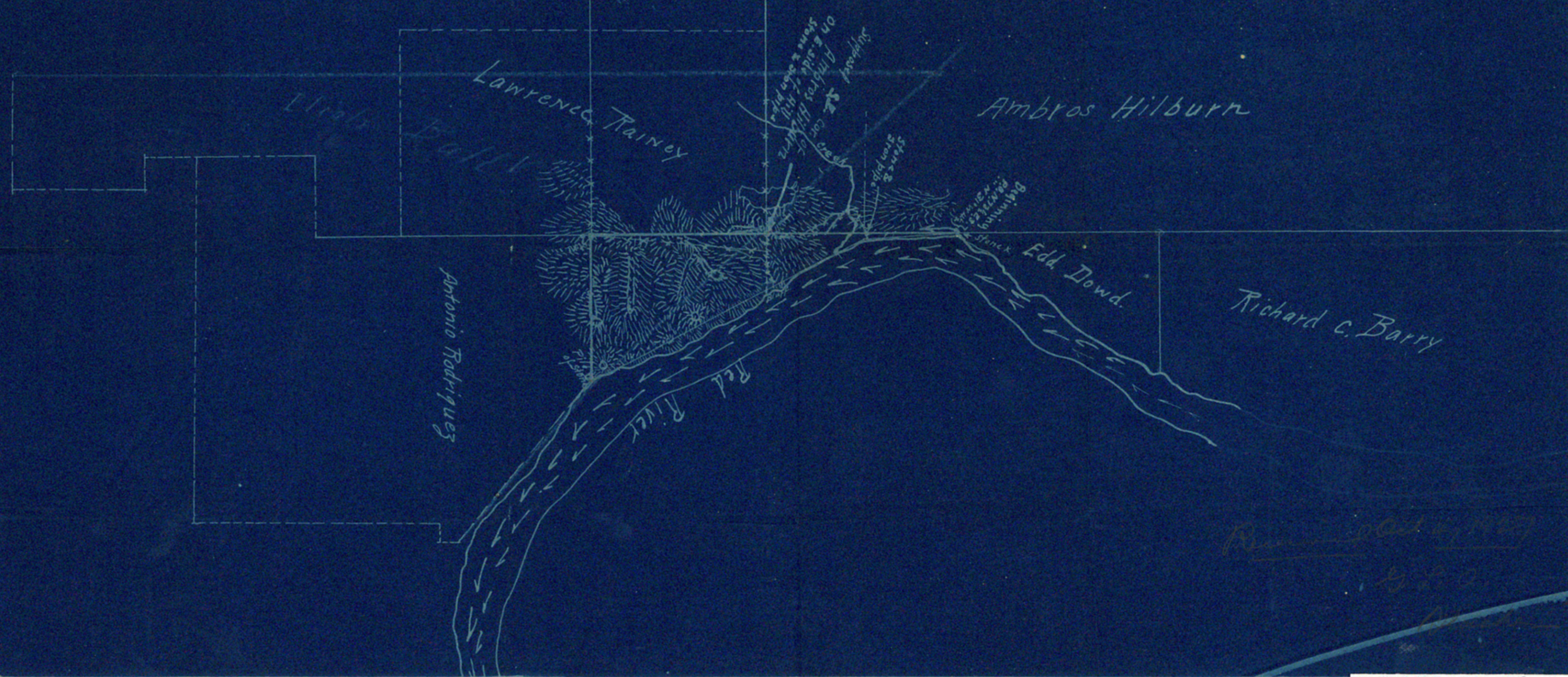


THE STATE OF TEXAS, County of Atascosa, I, Delany W. Cobb, State Licensed Land Surveyor, of Atascosa County, Texas, do hereby certify that the above Plat. showing the adjoining surveys to the H.D. Campbell survey N^o 3, are true and correct as were found on the ground by me, the 24th day of August, 1927 in Cooke Co., Tex.

Delany W. Cobb
State Surveyor, Atascosa Co., Tex.

Scale 500 ft. = 1 inch



Richard C. Barry
1927