

Note
 Survey no. 1 J.H. Stephens calls to begin 900 on West of the N.E. cor. of Sur. no. 10 John H. Gibbons on line with original no. 2 T.W.N. & Ry. Co. cov. 0/36. 2
 Excess from original corners in Sur. no. 23 of 4.32 on E & W and 3.32 on N & S.

Cottle Co.
 J. H. Stephens
 Survey no. 1
 1882

See Sketch of Cottle Co.
 See Sk. in S-17616.
 See map of Cottle Co. dated June 1882.
 also large map of Matador Land & Cottle Co. filed by Sam Chalk Surveyor for said Matador Co.
 See also file note of sur. 13 p. 4
 T. A. Thomson & ptd. S-17826.

Red lines & figures connection by A. A. Neff or C. B. Ross being course and distance from N.E. corner of Sur. 24 to the N.E. cor. of J.M. Campbell presumption "See sketch file 7"

Colored yellow indicates the excess in the J.H. Stephens Block, see memorandum attached.

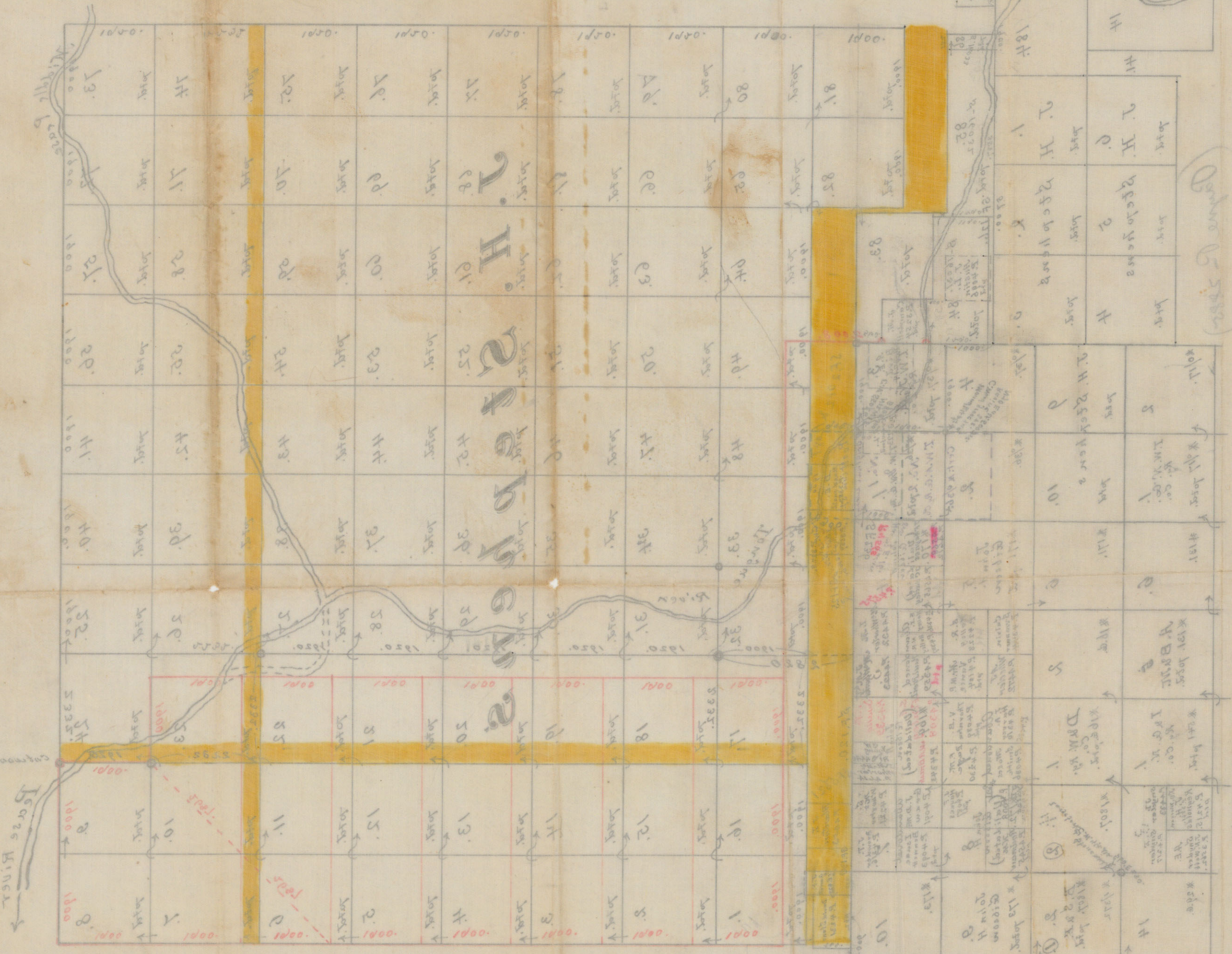
see S-15948 for sketch

J.H. Stephens survey, no. 83, 84, 85 & 86 are controlled by J. B. Payne David J. M. Campbell presumption and the common corner of surveys no. 13 & 14 A.B. & M. and 13 & 14 Indianola R.R. Co. to the N.W. cor. of no. 1 Cert. 0/36 & N.E. cor. of sur. no. 3 cert. 0/37 both for T.W.N. & Ry. Co. See sketch in S-17616.

Cottle County
 Gen'l Land Office
 March 3/94. E. von Rosenberg
 Examining Surveyor
 Sketch file of Cottle Co.
 March 4/94. by Rosenberg
 11192

N

Sketch by D. von Rosenberg
of the main branch 3-1884
& statement.



See also statement of Nov. 13 1884
for a more detailed description
of the main branch of the Sacramento River
See map of Cottle Co. dated June 1885.
See also map of 1886.
See also map of 1887.

See also map of 1888 for a more
detailed description of the main branch
of the Sacramento River
See also map of 1889 for a more
detailed description of the main branch
of the Sacramento River

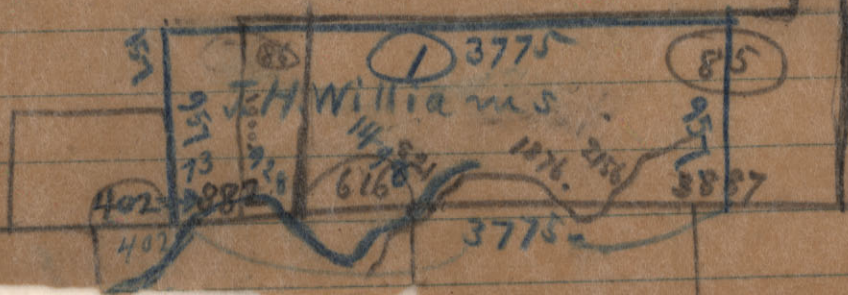
See also map of 1890 for a more
detailed description of the main branch
of the Sacramento River
See also map of 1891 for a more
detailed description of the main branch
of the Sacramento River

Sketch by D. von Rosenberg
of the main branch 3-1884
& statement.

See also map of 1885 for a more
detailed description of the main branch
of the Sacramento River
See also map of 1886 for a more
detailed description of the main branch
of the Sacramento River

Cattle ca sk File

File # 8



68 -
pea

104

1

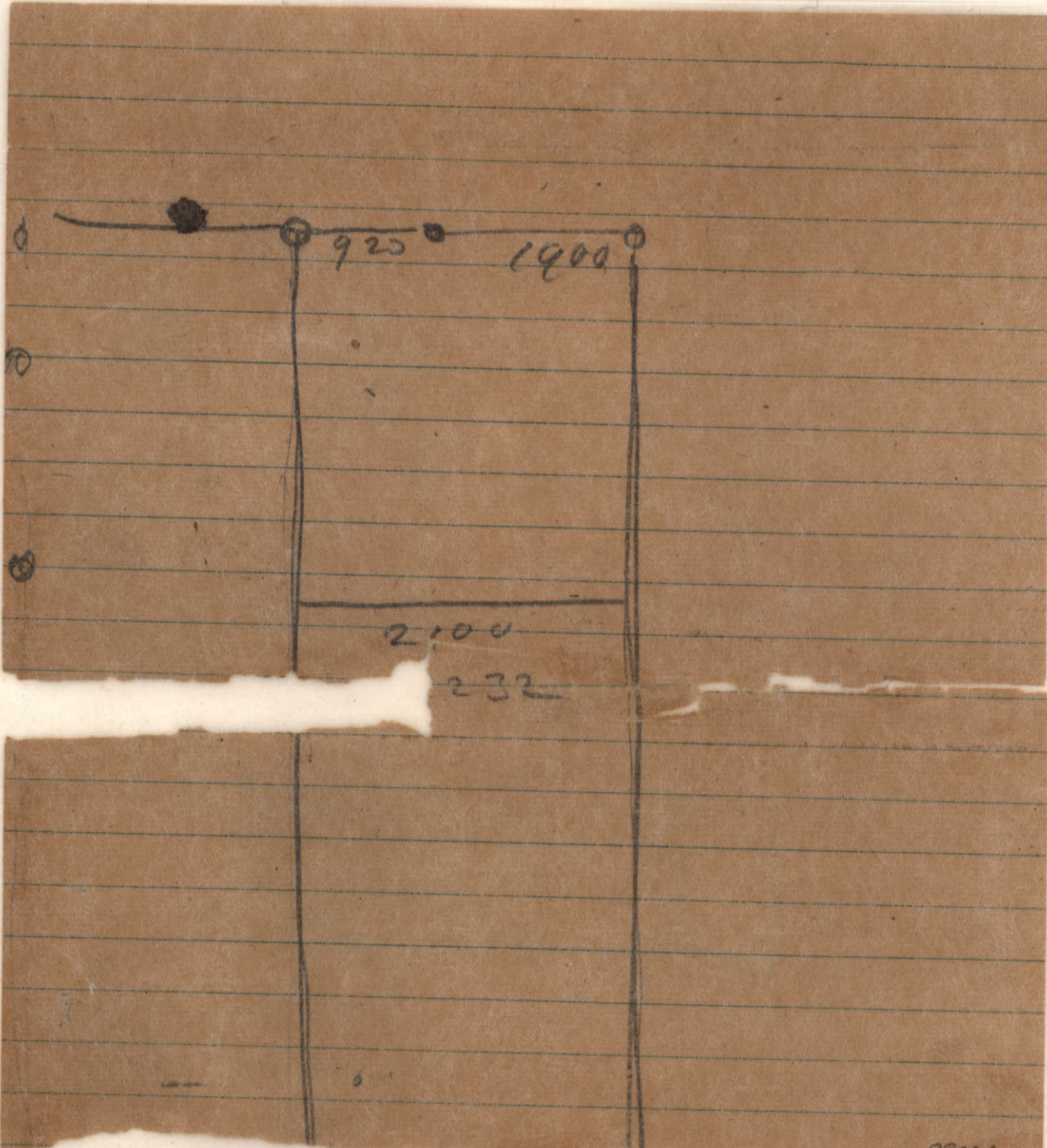
2

402
882
616

882
616

1498

1900



925

1900

2100

232

J. H. Stephens Block of 36 sections in Cottle County

8 3 sections of 640 acres each = 53,120 acres

3 fractional sections $4\frac{2}{3}$ a. 622 & 592 acres = 1,263 $\frac{1}{3}$ "

The amount paid for being 54,383 $\frac{1}{3}$ acres
and patented. —

And the following is the excess in said
Block according to data on file in this office.

Sections

10 + 1900 = 19,000 + 920 = 17,480.000

8 + 1900 = 15,200 + 432 = 6,566.400

10 + 1900 = 19,000 + 332 = 6,308,000

30,354,400 = 5377 acres

as indicated in yellow on diagram.

Not considering the 20 ms. excess to the
mile on 6 tiers of 10 sections each of 1900 ms.
= 120 ms. + 19,000 ms = 2,280,000 sq. ms = 402 acres.

would be a total excess of 5779 acres as

claimed and fenced by the Matador,

Lund & Cattle Co. under ^{the} J. H. Stephens

Block of surveys as purchased by him

from the State under the 50th Act of

July 14th 1879. —

McM 4/94 Roseberry

Cottle Co.
Sketch No. 8.

See sketch "C"

by E. W. Prudden
March 4/94

1
2
3
4
5
6
7
8
9
10
11
12
13
14
15
16
17
18
19
20
21
22
23
24
25
26
27
28
29
30
31
32
33