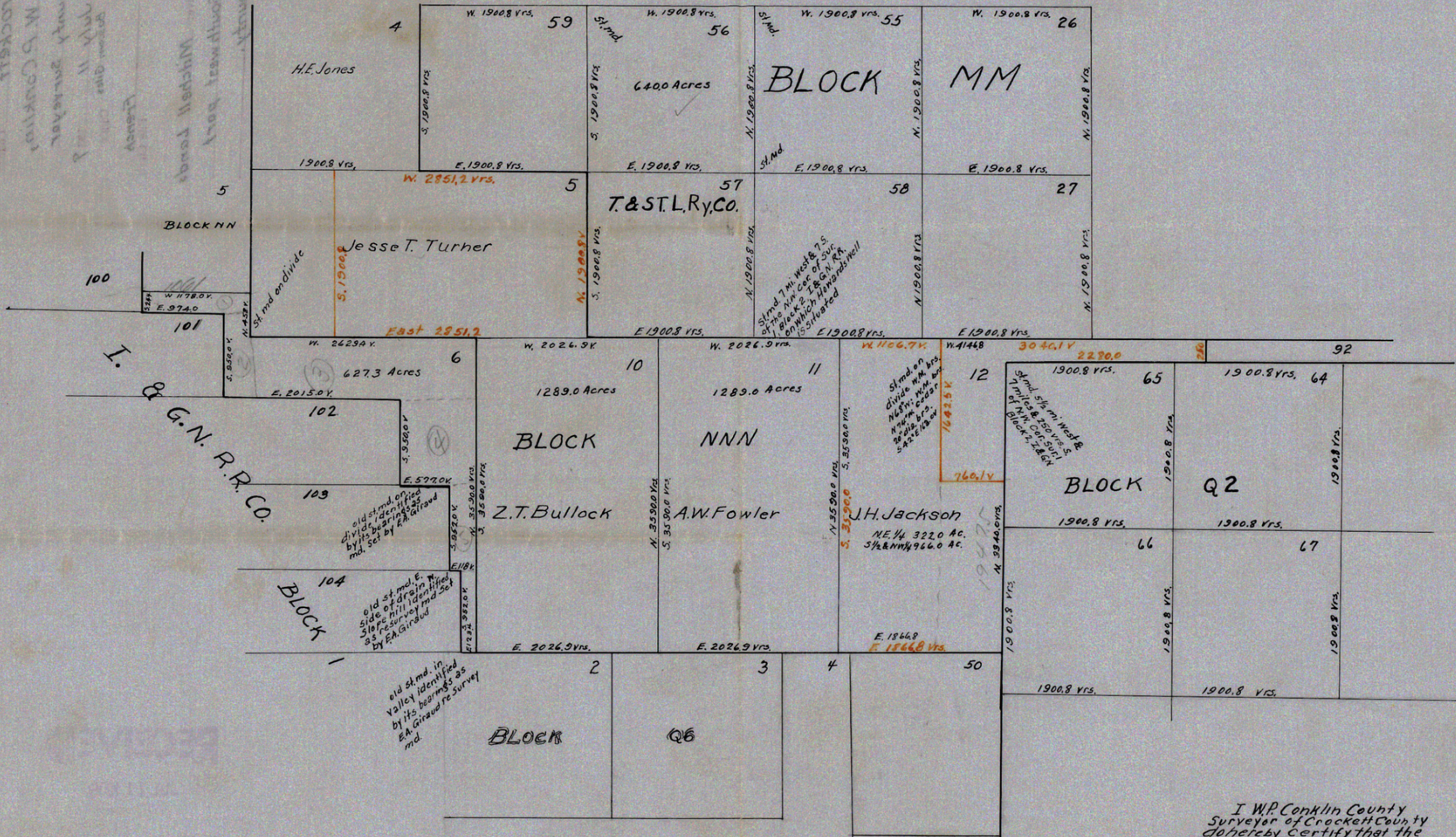


80
 W.P. Conklin
 County Surveyor
 July 11, 1908
 Mitchell lands
 in southwest part
 of county



I. & G.N.R.R. CO.

I W.P. Conklin County
 Surveyor of Crockett County
 do hereby certify that the
 above plat is true & correct
 being based on a survey in
 the field June 29 - July 5
 W.P. Conklin

MITCHELL LANDS
 Crockett County

754