

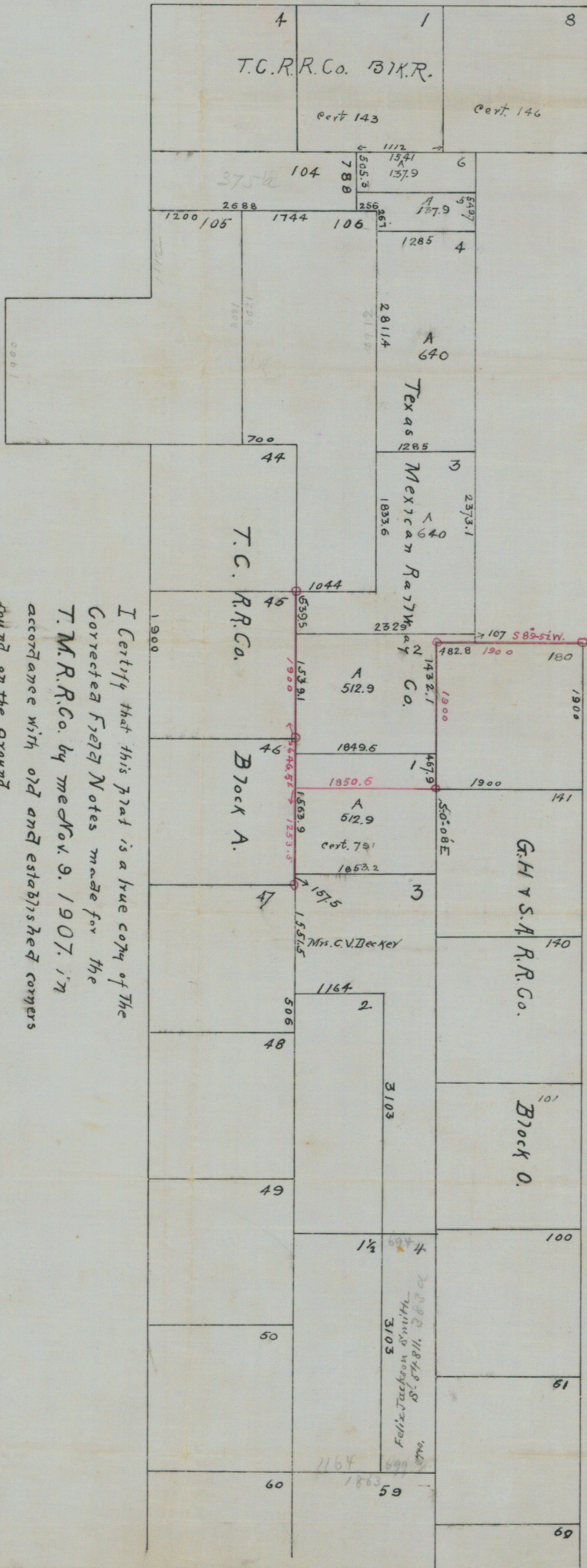
MAP SHOWING CORRECTED SURVEYS  
MADE FOR THE T.M.R.R.CO. IN  
CROCKETT COUNTY, TEXAS.

NOVEMBER 9<sup>TH</sup> 1907.

Variation 9°52' E

Scale: 10000<sup>US</sup> = 1 INCH

*Handwritten notes:*  
See map 3-10-1913  
11/22/1907  
Wm. C. ...  
John ...  
...



I Certify that this plat is a true copy of the  
Corrected Field Notes made for the  
T.M.R.R.Co. by me Nov. 9. 1907. in  
accordance with old and established corners  
found on the ground

*Frank T. ...*  
County Surveyor Crockett Co. Texas

See Surveyors Cert  
in S-26777 and  
SK "B" Sutton Co. SK.  
Files