

General Land Office

CHARLES ROGAN, Commissioner
J. J. TERRELL, Chief Clerk.

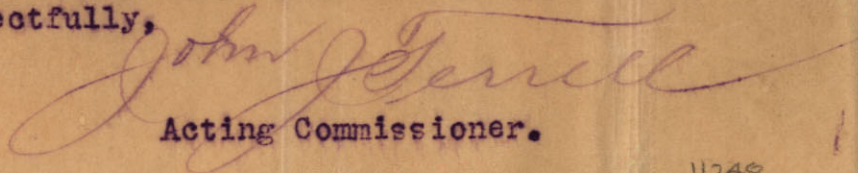
State of Texas

Geo. M. Hunt Esq.,
Lubbock, Texas.

Austin, 10/2/01.

Dear sir:- Replying to yours of 24th., ult., will say on your certified sketch you show that you found the N. W. corner of Sec.86 on the E.B.line of San Augustine Co. School land, Leag., No.1 which would indicate (according to field notes of surveys 85 and 6 Blk.C) at that point you were west of S. W. corner of Sec.85,500 vrs, hence you were 9500 vrs south and 12800 vrs East from S. E. corner of Sec.42 Blk.D.7 while on said sketch you represent N.W.corner of said Sec. 86 Blk.C to be 9750 vrs south and 12495 vrs east from S.E.corner of said Sec.42, which can not be unless your sketch is wrong or there is a conflict or shortage in some of the surveys in Blk C or D.7, which can not exist in our opinion as the field notes call for 1900 vrs square without bearings; some further explanation is required.

Respectfully,


Acting Commissioner.

Rowe-Wilson.

Office of
M. HUNT, 537
County a District Surveyor,
LUBBOCK COUNTY.

Rowe

Received in General Land Office

OCT 18 1901

Inclosures

Lubbock, Texas, Oct 15 1901 189

*Coosby Co
Sketch file 12*

J J Ferrell Acting Com'r
Austin Tex

Dear Sir

Replying to yours of 10/2 and which I enclose herewith, will note first that the $\frac{1}{4}$'s of Sur. 86 in Blk C, do not connect it with the San Augustine Co. School Land nor with the Surveys South of it. The fact is - when we reached the E B line of San Augustine Co. School Land, we were 250 Vrs South and 305 Vrs West of the N West of Sur. 86, thus making the vacancy between Sur. 85 in Blk C and San Augustine Land. 805 Vrs instead of 500 Vrs, making also a vacancy of 250 Vrs between said land and Blk

Office of
M. HUNT,
County District Surveyor,
LUBBOCK COUNTY.

Lubbock, Texas, 189.....

On the North. Now we will go back to the corner at the forks of Yellow House Creek from which we locate the S^W cor of Sur 2 in Blk R G and the N^E cor of Sur. 70 in Blk A and find S line of R G 181⁰ is North of San Augustine Land or a vacancy of that width between them. There is N 4 miles and lack 69⁰ of reaching Blk D 7 thus making a vacancy of 69⁰ between these Blks. This is really the way the sketch should have shown it. for we gave you the correct distance 9750⁰ North and 12495⁰ West. and if this was not a correct Survey from N^o 141 in Crosby Co. I do not see how it is to be made We got

1088

Office of
GEORGE M. HUNT,
County and District Surveyor,
LUBBOCK COUNTY.

Lubbock, Texas, 189.....

the $\frac{1}{4}$ of BLK 6 at Emma Tex
so as to determine its relative po-
sition with reference to our work.

The Surveyor of Crosby Co. and Ex-
Surveyor of Lubbock were with
me and participated in the work.
One Surveyor was constantly ^{with} ~~with~~
the Chain Carriers. We used a
back flag and we all felt that
the work was carefully and correct-
ly done. All parties in the vicin-
ity of A 7 seem satisfied with
the Sur. made several of whom
were with us on the entire work
and are anxious to have more work
done. but I must wait until I have
a recognition of this work. Hoping
this explanation will be satisfactory
I am Yours. Truly Geo M Hunt

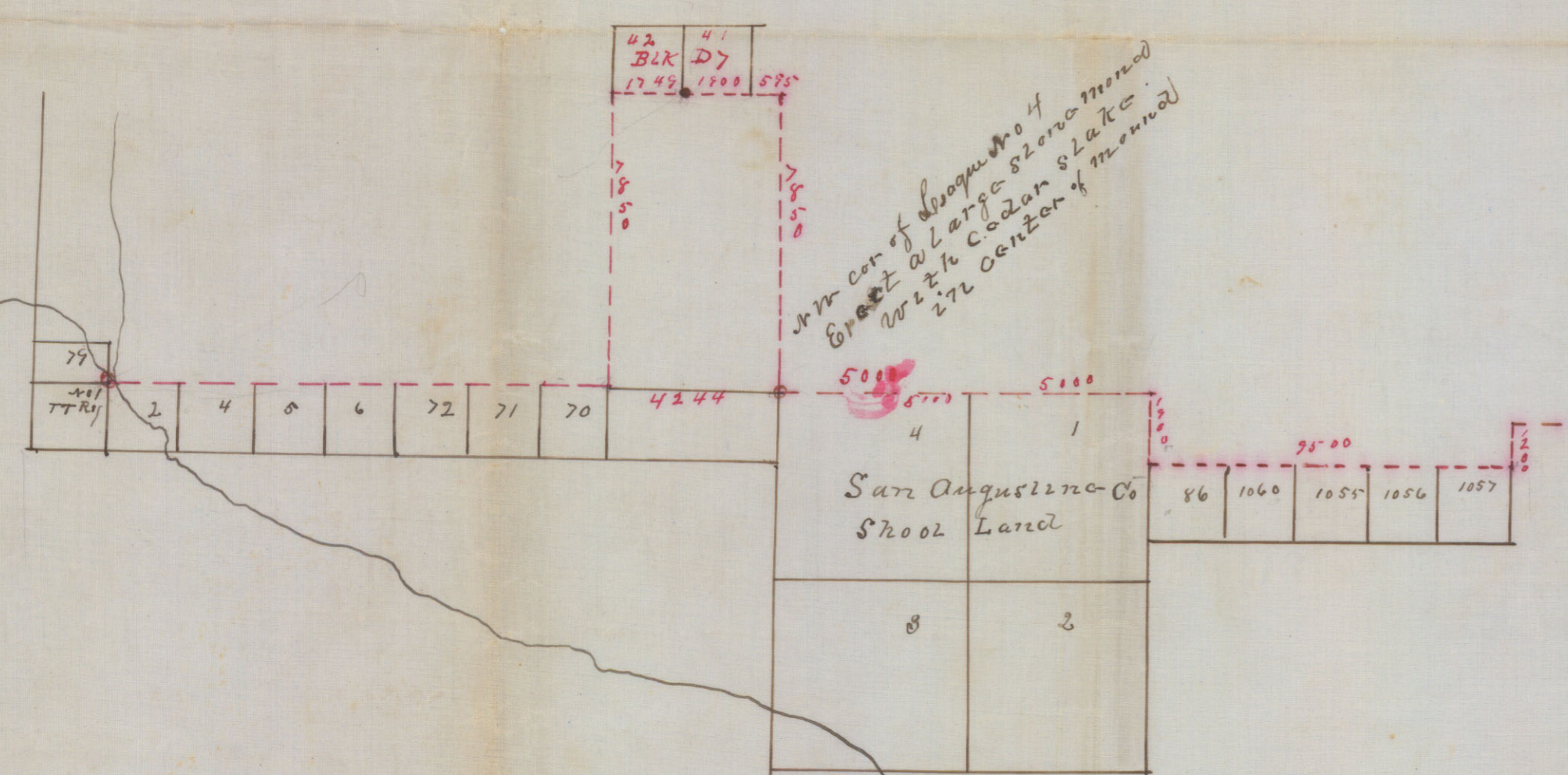
Office of
STAN M. HUNT,
County District Surveyor,
LUBBOCK COUNTY,

189

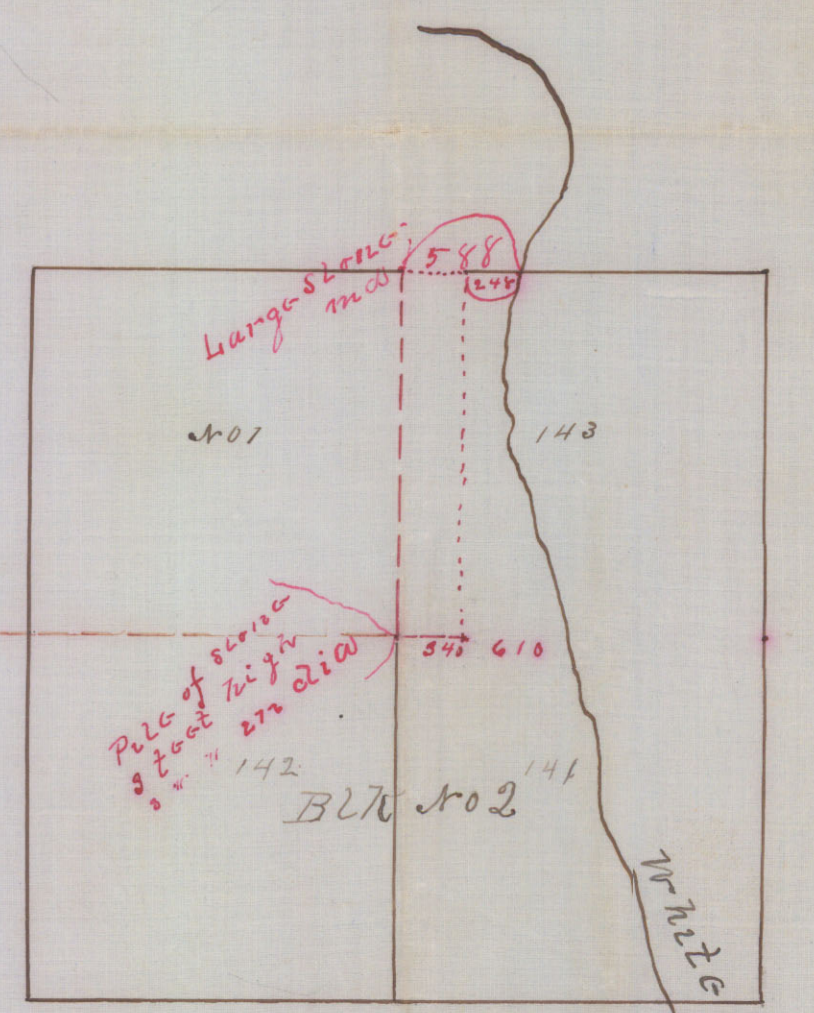
Lubbock, Texas

4244
3649

all of this land is owned by the same person
 the same person who owned the land in 1850
 the same person who owned the land in 1860
 the same person who owned the land in 1870
 the same person who owned the land in 1880
 the same person who owned the land in 1890
 the same person who owned the land in 1900
 the same person who owned the land in 1910
 the same person who owned the land in 1920
 the same person who owned the land in 1930
 the same person who owned the land in 1940
 the same person who owned the land in 1950
 the same person who owned the land in 1960
 the same person who owned the land in 1970
 the same person who owned the land in 1980
 the same person who owned the land in 1990
 the same person who owned the land in 2000
 the same person who owned the land in 2010
 the same person who owned the land in 2020



N.W. cor of Block No 4
 East at large stone mound
 with cedar stake
 272 center of mound



Note the red dotted lines show the lines run over the ground.
 Found a large stone mound the N.W. cor of 141 Block No 2 in brushy for
 340 rows West of another stone. I run North from the stone mound 340 rows East of the
 large stone mound 1900 rows found nothing but run West 340 rows and found
 a large stone as called for in the field notes for N.W. cor of 143 Blk. 2 I set up at the
 large stone mound 1 mile South of stone mound the N.W. cor of 143 and 340 rows West of
 another stone mound thence N 21 miles less 145 thence S 1200 rows to the N.E. cor of 1057 thence N
 thence N 1000 rows to N.W. cor of No 4 thence N 7850 rows a point thence N 595 rows
 to the E cor of No 41 Blk D7 thence N 1900 rows to the E cor 42 Blk D7 a large stone set in ground 4 feet
 from which leassy hill is 84 1/2 miles thence N 1749 rows to a stake thence S 7850 to N.E. cor of No 70
 and 197 rows West of the forks of Yellow House Creek
 and N.E. cor of No 1 TTR Co a stone mound 54 rows South

10/19/01
 10/20/01
 10/21/01
 10/22/01
 10/23/01
 10/24/01
 10/25/01
 10/26/01
 10/27/01
 10/28/01
 10/29/01
 10/30/01
 10/31/01

