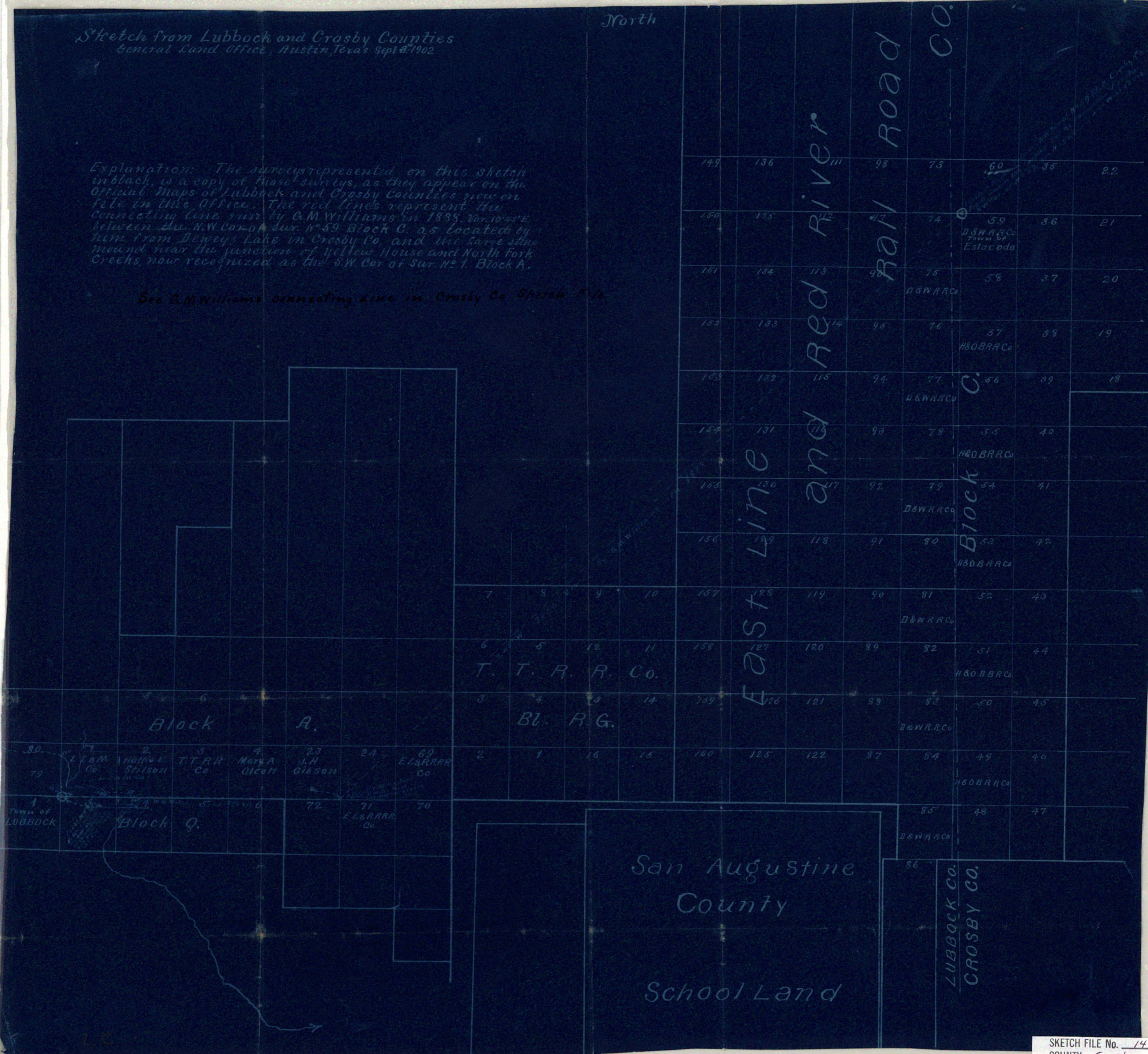


Sketch from Lubbock and Crosby Counties  
 General Land Office, Austin, Texas Sept 8-1902

North

Explanation: The surveys represented on this sketch in black, is a copy of those surveys, as they appear on the Official Maps of Lubbock and Crosby Counties now on file in this Office. The red lines represent the connecting line run by G.M. Williams in 1888, Var. 10°45'E between the N.W. Cor. of Sur. N° 59 Block C, as located by him from Dewey's Lake in Crosby Co, and the large stone mound near the junction of Yellow House and North Fork Creeks, now recognized as the S.W. Cor. of Sur. N° 1, Block A.

See G.M. Williams connecting line in Crosby Co Sketch File



# W.W.WATTS' RANCH,

in  
CROSBY COUNTY,  
TEXAS.



SCALE 1000 VARAS = 1 INCH

I, W.D. Twichell, State Surveyor, do hereby certify that this sketch truly and correctly represents land surveyed by me. Sept. 15 to Oct. 25, 1904.  
W.D. Twichell, State Surveyor.

SKETCH FILE NO. 14-2  
COUNTY Crosby