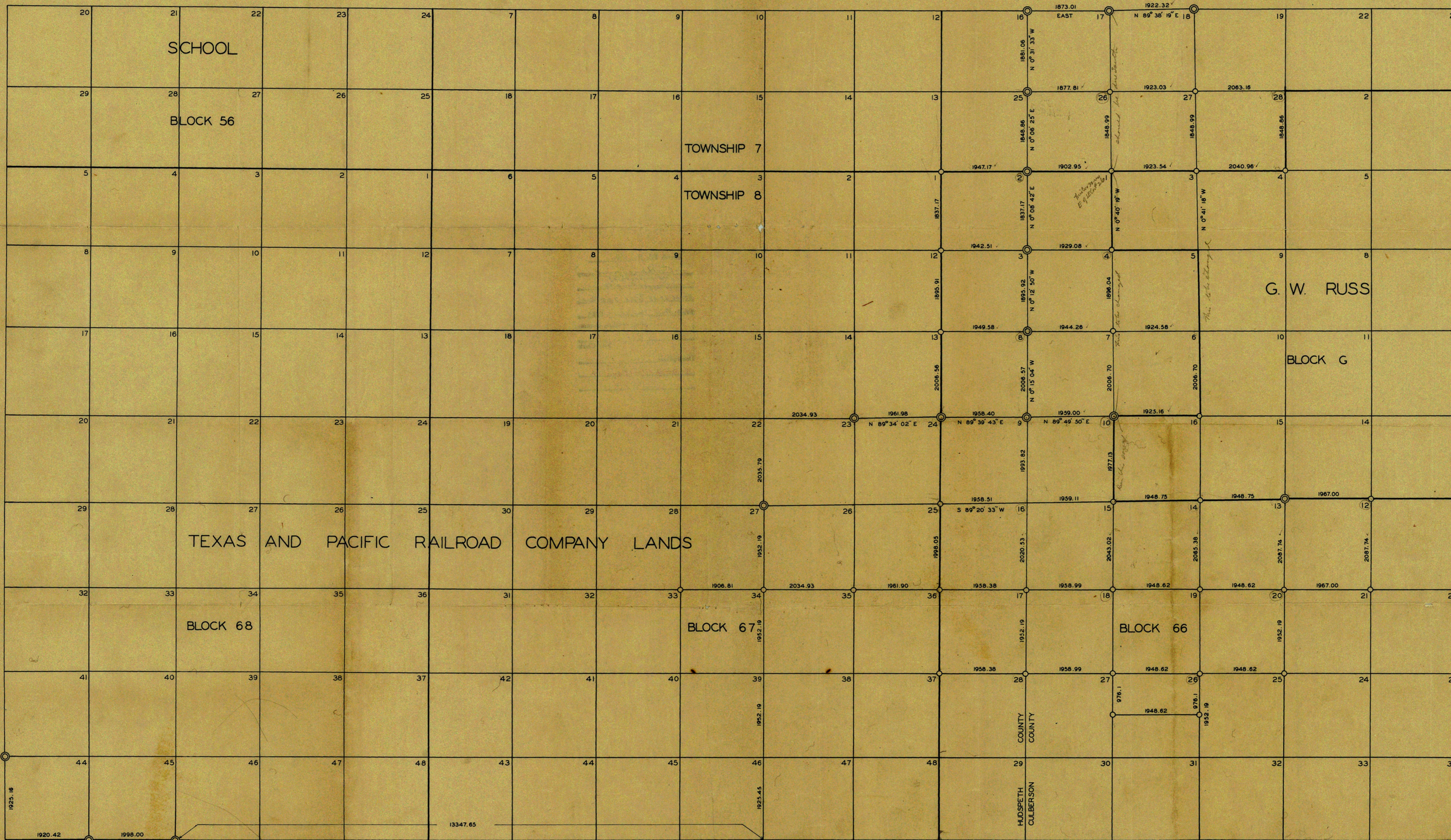


LANDS IN
HUDSPETH AND CULBERSON CO. TEX.

SCALE 1 INCH = 1000 VRS.



I H. L. GEORGE A LICENSED SURVEYOR OF SAN ANGELO TEXAS
DO HEREBY CERTIFY THAT THE ABOVE MAP CORRECTLY SHOWS
AN ACTUAL SURVEY MADE BY ME ON THE GROUND.
WITNESS MY HAND THIS 17 DAY OF NOV. 1932

H. L. George

LEGEND

- ORIGINAL CORNERS
- CORNERS SET