

T & P R R CO

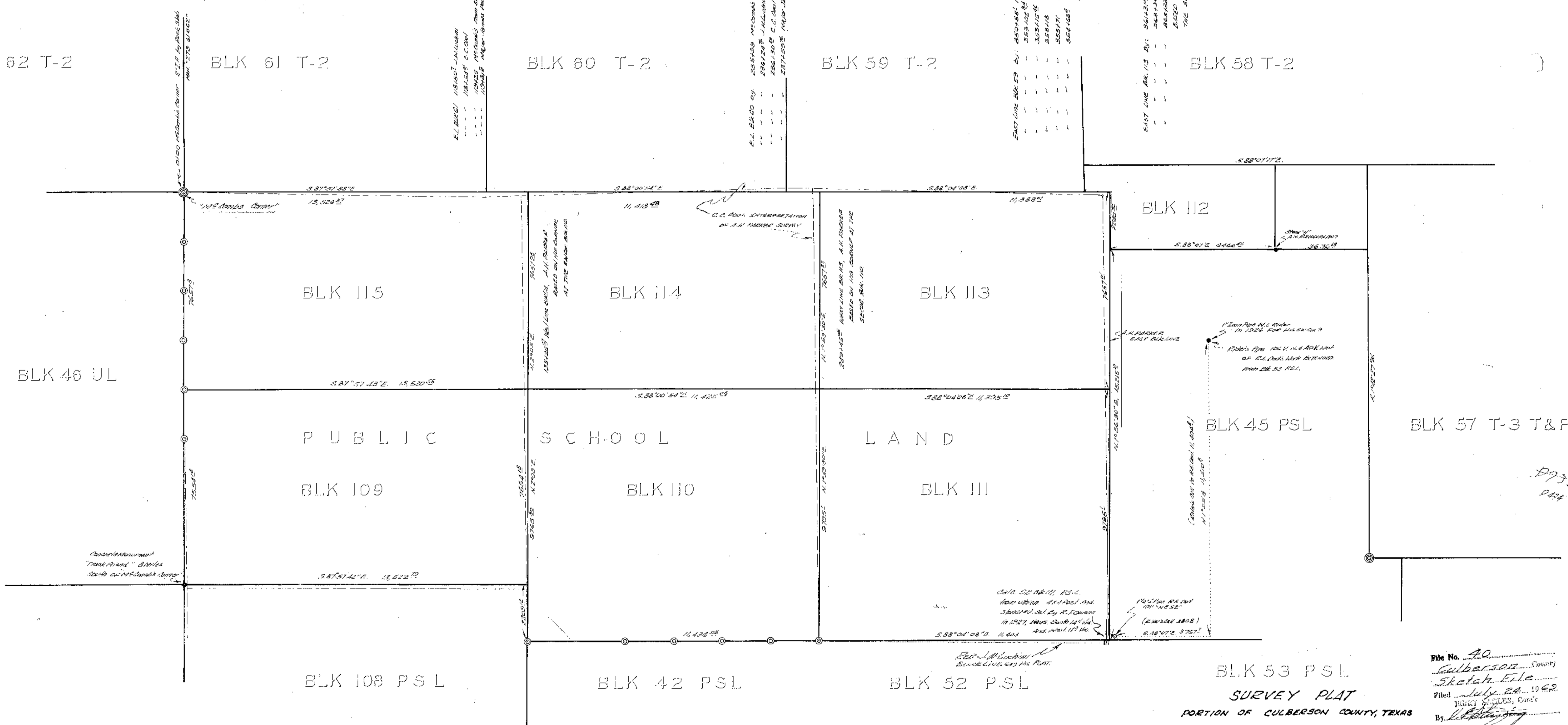
BLK 62 T-2

BLK 61 T-2

BLK 60 T-2

BLK 59 T-2

BLK 58 T-2



SUMMARY OF SURVEY § Blocks 110, 111, 112, 113, 114, 115 and 109 were surveyed by A. H. Parker in year 1900. The T. & P. R.R. Co. Blocks were surveyed originally by Jacob Meuchler in 1878 and resurveyed by Paul McComb in 1884. Block 45, P. S. L. was surveyed by Dennis Corwin in 1884.

The Notes and the Footstaps of A. H. Parker here and elsewhere bring out ONE PERTINENT FACT about the construction of these blocks. It is apparent that Mr. Parker started his survey on Mr. Touchler's Stone Wound in Block 60, T-2, T. & P. Co. from the N. W. Corner of Block 110. He then ran East setting 5 monuments that are recoverable today, including the SE Corner of Block 110, P. S. L. From the SE Corner of Block 110, P. S. L. he then ran East up his survey and proceeded to Mr. McComb's SE Corner of Block 61, T-2, T. & P. Survey. From this point Mr. Parker surveyed South, setting several Corners along to the SE Corner of Section 7, Block 109, P. S. L. at this point it is apparent that Mr. Parker concluded his survey of the above Blocks 109, 110, 111, 112, 113, 114 and 115 P. S. L. and went to some other blocks as he had approximately 120 P. S. L. Blocks to survey under contract from the General Land Office.

In writing his field notes of the P. S. L. Blocks Mr. Parker makes SEVERAL PASSING CALLS to the T. & P. Blocks to the North. His only tie to the T. & P. on the ground was at the SE Corner of Block 61, T-2, from where he ran South to the SE Corner Section 7, Block 109 P. S. L. and from this point his field note calls Lack 130 Yards N-60 and 120 Yards E-90, fitting his SE Corner of Block 110, P. S. L. There is one conclusion to draw from this situation. The Parker Corners on the South Line of Block 110 will break the passing calls to the T. & P. Surveys to the North. As noted on the above plat there are several interpretations as to where the T. & P. Blocks are located by several different surveyors.

Block 45, P. S. L. was partially resurveyed by W. L. Rider in 1926. Mr. Rider's plat shows that he started off Mr. S. S. Dods Corner in Block 53, P. S. L. and ran North even Miles. From actual tie Mr. Rider's Iron Pipe for his SE Corner of Section 9, Block 45, P. S. L. is 106 Yards North and 40 Yards West of what would be an extension of Mr. S. S. Dods work in Block 53, P. S. L. This 106 Yards is not excess in Mr. Rider's work. It is a bust somewhere between the SW of Section 9 and the NE Corner of Block 53, P. S. L. according to Mr. Dods. Mr. S. S. Dods in 1911 resurveyed Blocks 42, 52 and 53, P. S. L. The only place that he agrees with the Parker Surveys is at the SE Corner of Block 110, P. S. L. from there going East Mr. Dods' monuments drift to the North of Mr. Parker's South Line of the P. S. L. Blocks. This drift of Mr. Dods' to the North further magnifies the error of location of Mr. Rider's Iron Pipes in Block 45, P. S. L. My conclusion on Mr. Rider's Iron Pipes in Block 45, P. S. L. should be marked off as bad chaining.

CONSTRUCTION NOTES § The NE Corner of Block 115, P. S. L. is True EAST of McComb's SE Corner of Block 61, T-2, T. & P. R.R. Co. Survey and True NORTH of A. H. Parker's SE Corner of Block 110, P. S. L. Survey.

The NE Corner of Block 114, P. S. L. is True EAST of the NE Corner of Block 115, P. S. L. and True NORTH of A. H. Parker's SE Corner of Block 110, P. S. L.

The NE Corner of Block 113 is True EAST of the NE Corner of Block 114, P. S. L. and True NORTH of Parker's Call SE Corner of Block 111, P. S. L.

The SE Corner of Block 115 is True EAST of Parker's SE Corner of Block 110, P. S. L. and True NORTH of Parker's SE Corner of Block 110, P. S. L.

The SE Corner of Block 114 is True EAST of the SE Corner of Block 115, P. S. L. and True NORTH of Parker's SE Corner of Block 110, P. S. L.

The SE Corner of Block 113 is True EAST of the SE Corner of Block 114, and True NORTH of Parker's Call SE Corner of Block 111, P. S. L.

The SE Corner of Block 109 is True SOUTH 8 Miles from McComb's Corner at the SE Corner of Block 61, T-2, T. & P. R.R. Co. Survey. It is also a Concrete Monument set by Frank Friend in 1936 for the SE Corner of Block 45, University Lands.

The SE Corner of Block 109 P. S. L. is True EAST of the SE Corner of Block 109 and True NORTH of McComb's SE Corner of Block 110, P. S. L.

The SE Corner of Block 110, P. S. L. is True EAST of Parker's Stone Wound set in 1900 in his survey of P. S. L. Blocks.

The SE Corner of Block 111, P. S. L. is True EAST of Parker's Stone Wound set in 1900 in his survey of P. S. L. Blocks.

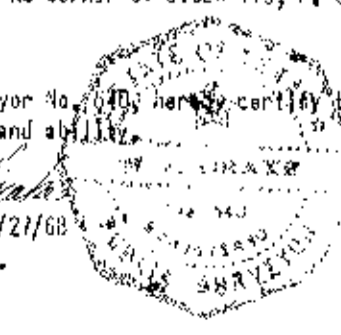
The SE Corner of Block 111, P. S. L. is True EAST of Parker's SE Corner of Block 110, P. S. L. CALL Distance, (Reduced to Grid)

CONCLUSION § The passing Calls to the T. & P. R.R. Co. Surveys to the North should be ignored in order to bring about an orderly construction on the P. S. L. Blocks that will be in keeping with the Corners that A. H. Parker Actually set on the ground. This construction would be in keeping also with the reconstruction of P. S. L. Blocks 91, 92, 93, 98, 99, 63, 61, 62, 64, 63, and 90 that was recorded by the General Land Office for a retracement of A. H. Parker in these Culberson County Blocks. In particular A. H. Parker's Passing Call to the SE Corner of Block 60, T-2, T. & P. R.R. Co. is 729 Yards. The Construction Allowed by the Land Office was 899.7 Yards. This is the identical situation that occurs at the NE Corner of Block 113, P. S. L. The T. & P. R.R. Co. Survey is a Senior Survey to the Parker Survey and the Parker Survey should be ignored at the NE Corner of Block 113, P. S. L. as it was at the SE Corner of Block 60, T-2, T. & P. R.R. Co. Survey.

*For Information
Purposes Only*
Work performed by non-LSLS

W. L. Drake, Registered Public Surveyor No. 1176, hereby certifies that the above survey is correct to the best of my knowledge and ability.

W. L. Drake 8/21/69
Midland, Texas.



ALL BEARINGS AND DISTANCES ARE LAMBERT GRID, CENTRAL ZONE, STATE DEPT. OF AGRICULTURE.

LEGEND

- CORNER BY PAUL MCCOMB 1884
- CORNER BY A. H. PARKER 1900
- MONUMENT BY D. S. DODS 1911
- MONUMENT BY OTHER SURVEYORS

SCALE: 1" = 2000 YARDS

Surveyor's Map of
Comments on P.S.L.
Blks. 109 thru 115
\$ 45.
Filed for information
contained therein.

FILE NO. 40
Culberson County
Sketch File
Filed July 22, 1969
HENRY G. CALLES, Clerk
By: [Signature]
SURVEY PLAT
PORTION OF CULBERSON COUNTY, TEXAS

RECEIVED
JUL 24 1969
General Land Office

SKETCH FILE NO. 40
COUNTY Culberson