

SKETCH
OF 103rd MERIDIAN, W.L.
Showing
CONFLICT OF CAPITOL LEAGUES.

15
18 A. 1
2
28
29 A. 29
30
34
35 A. 55
54
57
56 A. 56
78
79 A. 79
80
99
100 A. 100
101
121
122 A. 122
124
123 A. 123
135
136 A. 136 R.
137 R.
148
149 A. 149
150
161
162 A. 162
164
163 R.
175

177
176 R.
181
R.
182 R.
193 R.
194
251
252
266
267
270 R.
272 R.
340 R.
341 R.
350 R.
351
361
302

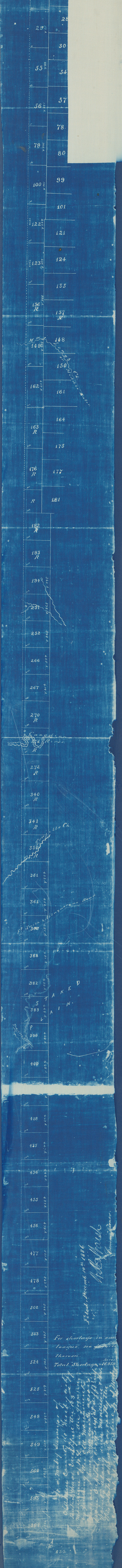
368
382
383
399
400
417
418
435
436
455
456
477
478
502
503
524
525
548
549
560
593
594
630

Filed, December 14th 1886
A. B. Wash
D. M. Johnson

For shortage in each league, see figures thereon.
Total Shortage = 16959 Acres

J. H. Mabry Surveyor of Dallas County do hereby certify that I have investigated the 103rd meridian of N. H. in the grounds by finding the old landmarks there are here marked across from Capitol grounds at sufficient points along such meridian that this sketch shows correctly the correct line of the meridian.

SKETCH
 of 105th MERIDIAN, W.L.
 showing
CONFLICT OF CAPITOL LEAGUES.

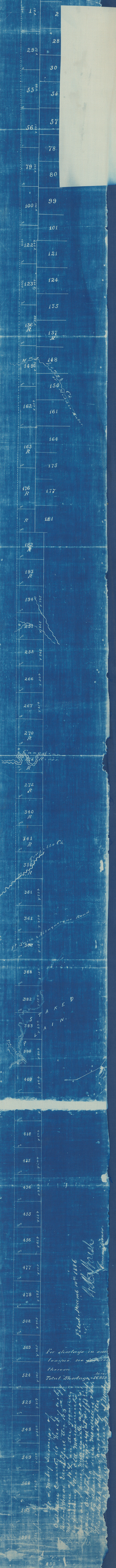


Filed, Decemb 14th 1886
A. B. Wash
 Surveyor

For shortage in each league, see figures thereon.
 Total Shortage = 46959 Acres

*Mr. J. M. W. by the surveyor of
 Orleans Parish, Louisiana
 has been instructed to
 this end of the 105th
 Meridian, and to
 the same Capital
 the same of the
 the same of the
 the same of the*

SKETCH
 of 103rd MEBIDIAN, W.L.
 showing
CONFLICT of CAPITOL LEAGUES.

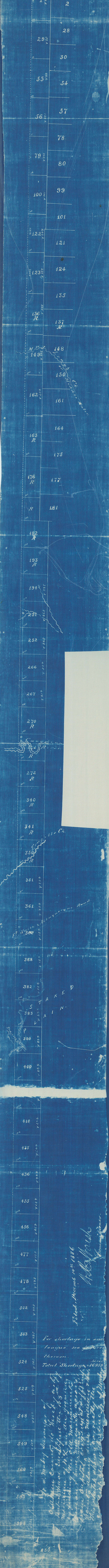


Filed, Decemb 14th 1886
 H. B. Wash
 Commissioner

For shortage in each league, see figures thereon.
 Total Shortage = 16959. Acres

Mr. S. Mabry Director of the S. Mabry County, Mo. The S. Mabry County, Mo. is a new organization organized by the old Madison County, Mo. The S. Mabry County, Mo. is a new organization organized by the old Madison County, Mo. The S. Mabry County, Mo. is a new organization organized by the old Madison County, Mo.

SKETCH
 of 103rd MERIDIAN, W.L.
 showing
 CONFLICT OF CAPITOL LEAGUES



Filed, Decemb 14th 1886
[Signature]
 Commissioner

For shortage in said league, see figures thereon.
 Total Shortage = 16939 Acres

[Handwritten notes:]
 Mr. W. Mabry Director of Oldham County Co. Va. et al. vs. et al. that a share be set off to the 103rd meridian. The signature of Mr. W. Mabry is given by stating the old map is correct. However, having been with the map of the Capitol Commission it is not. There is already some mention of the matter at length in my report of 1884.

Oldham

K-7-103

Conflict of Capital Leagues
K-7-103

566 K-7-102

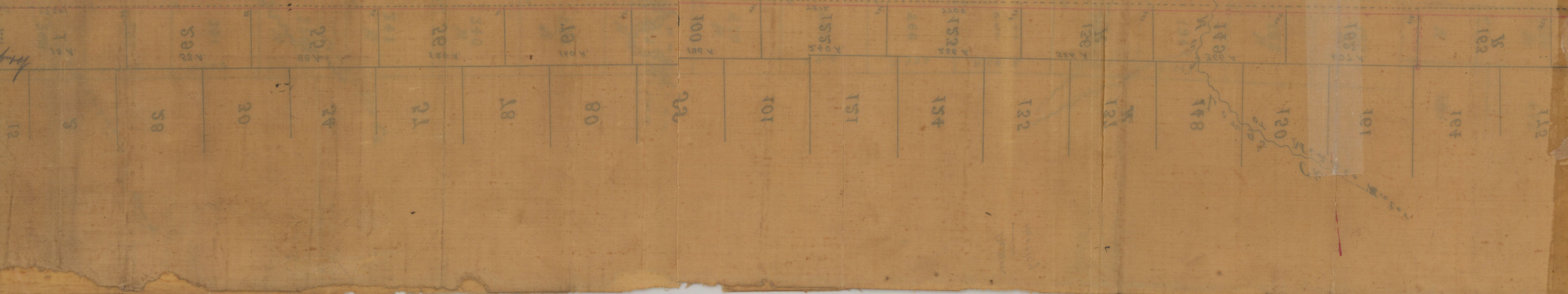
K-7-102

Dallas Co. Sketch file 2
K-7-102 SEE K-7-103
Wolham 103M Meridian

7

Dallam Co File 2
WS Mabry's Sk. showing
103° Meridian-

12/14/06. W.S. Mabry
CAPITOL TERRACE
MERRICK, W.V.
103° MERIDIAN W.C.
SKETCH



Dallam Co. Sk File 2

Dallam Co Sk. File 2



V
W
X
Y
Z
A
B
C
D
E
F
G
H
I
J
K
L
M
N
O
P
Q
R
S
T
U
V
W
X
Y
Z

For shortcuts in case
of errors
John W. Whitcomb
Treasurer
Dec 1st 1886
See map
The State of West Virginia
Commissioners
No 1088

John W. Whitcomb
Treasurer
Capitol
No 1088