

DALLAM Co Skelton
 File #
 Showing survey ground
 Mr. J. M. Skelton
 in S.E. part of Dallas Co.
 State of Texas
 Office. Nov. 11/1903

BEATY SEALE & FORWOOD BLK. 1.



"Exhibit A"

Variation of Meridians at Chamberg as established by U.S. Coast Survey 11° 53' East

I hereby certify that this is a correct copy of the Survey's shown hereon together with the computations made and the engineering details that show the true bearings and corners shown are true as I found them on the ground by actual survey made on ground. G. J. Blaine, Subst. Sup. Div. Survey, U.S. Dept. of the Interior.

This Commission made with the NW Corn. of BLK 44 H+T.C.R.R.

Filed in General Land Office
 November, 11, 1903.
 Chief Clerk & Acting Comr.

A ~~4~~
 DALLAM Co. Sketch
 File A ~~4~~

Showing surveys around
 the Joel Moore League
 in S.E. part of Dallam Co.
 Filed in General Land
 Office, Nov. 11/1903.

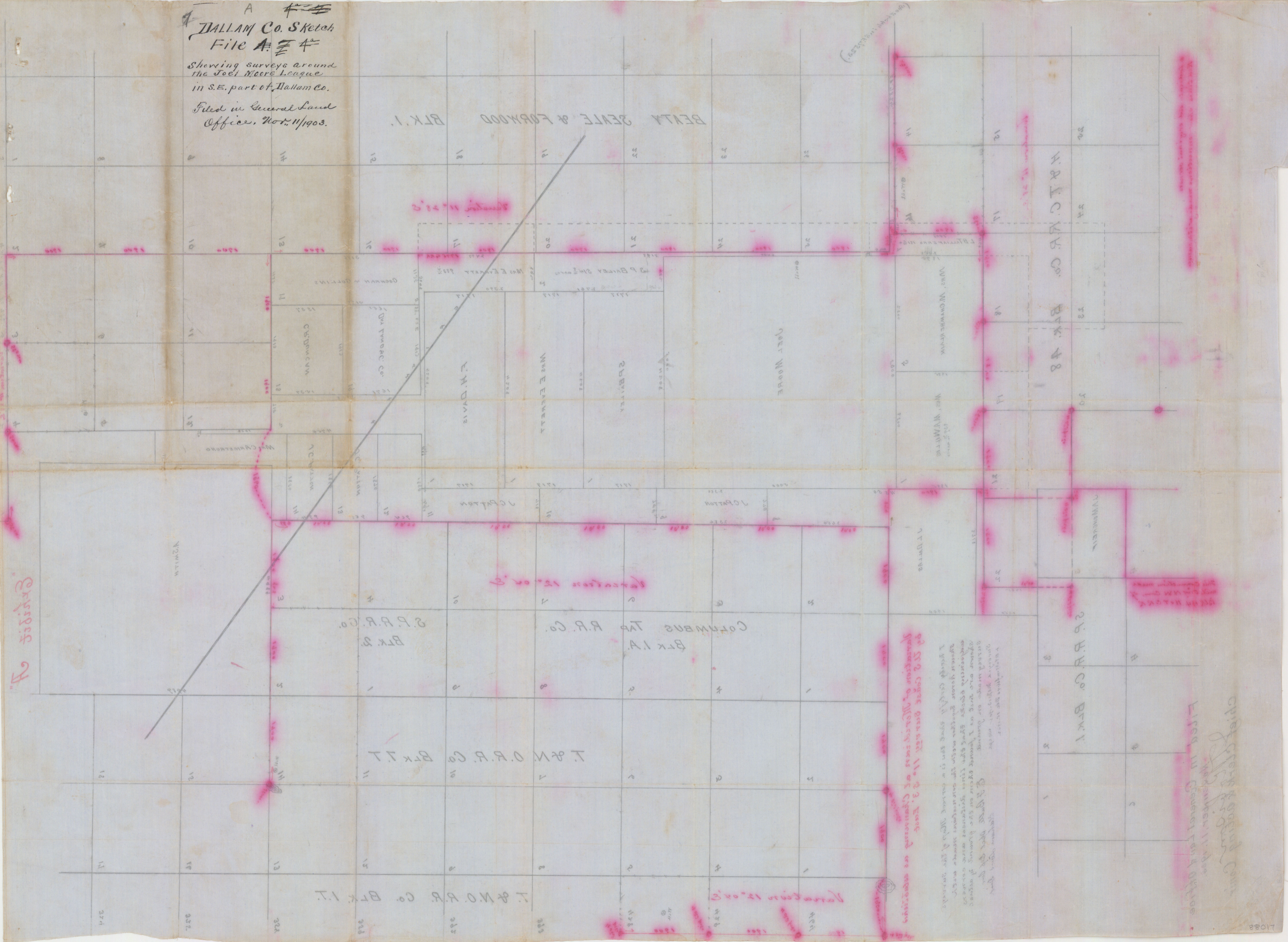


Exhibit A

Variation from the correct
 quarter section corners
 located in the SW 1/4 of
 Section 11, Range 24E,
 Township 34N, Range 24E,
 and the NE 1/4 of Section
 12, Range 24E, Township
 34N, Range 24E, was
 located on the 11th day
 of November, 1903.
 The correct location of
 the quarter section corners
 is shown by the red lines
 on the attached map.
 The correct location of the
 quarter section corners is
 shown by the red lines on
 the attached map.

Chief Clerk Land Office
 Filed in General Land Office
 November 11, 1903

Surveyor of Texas.

I,, Deputy Surveyor of

Texas, do hereby certify that the foregoing survey was made by me on the ground, and according to law; that the limits, boundaries and corners, with the marks, natural and artificial, are truly described in the foregoing Plat and Field Notes, just as I found them on the ground.

This day of 190.....

Deputy Surveyor of Texas.

Dallam SK File A

28018

I, A L Turner, Surveyor of Oldham Land Dist

Texas, do hereby certify that I have examined the foregoing Plat and Field Notes and find them correct and that they were made on the ground as stated in the above certificate, and that they are recorded in my office in

Book my office, Page the original of which this map is a copy is on file in

This 2 day of Nov 1902

A L Turner

Surveyor of Oldham Land Dist Texas.

88619