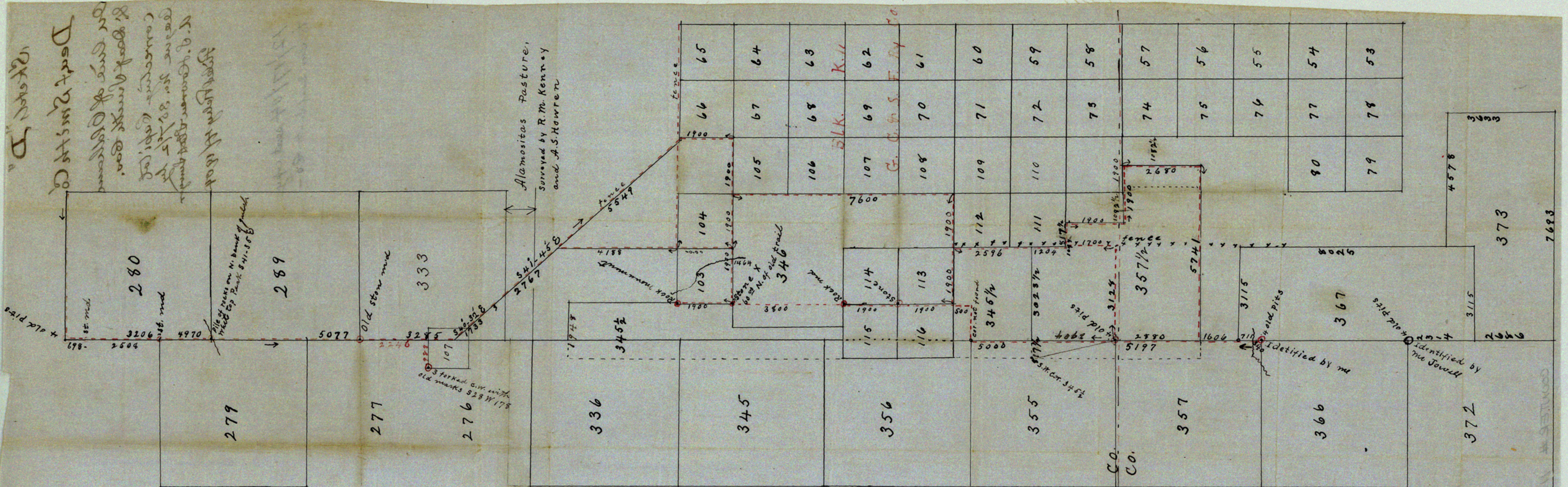


D  
Deaf Smith Co  
On line of old  
Deaf Smith Co.  
concerning  
the  
N. of corner of  
the  
the  
the



From the S.W. cor. of 289 to the S.E. cor. of 355. identified. is evidently a continuous south line.

Filed Feb. 4<sup>th</sup> 1904  
John J. Ferrell  
Clerk

Sketch showing conflict of Capitol Leagues 345 1/2 and 357 1/2 with leagues 336, 345-356 and 355. Also 357 if the call for the S.E. cor. of 355 in the fieldnotes of 357 1/2 be disregarded, but the S.E. cor. of league 355 is well defined by 4 old pits, and is in a line projected North from the S.E. cor. f. n. of 357 1/2 call for these 4 pits, therefore in locating 357 1/2 I East from the E. line of 357 - (Ex. the red circles denote old corners dotted lines indicate connecting lines run by me. Arrows show direction of lines run.

Oldham  
Deaf Smith

A. S. Howren,  
State Surveyor