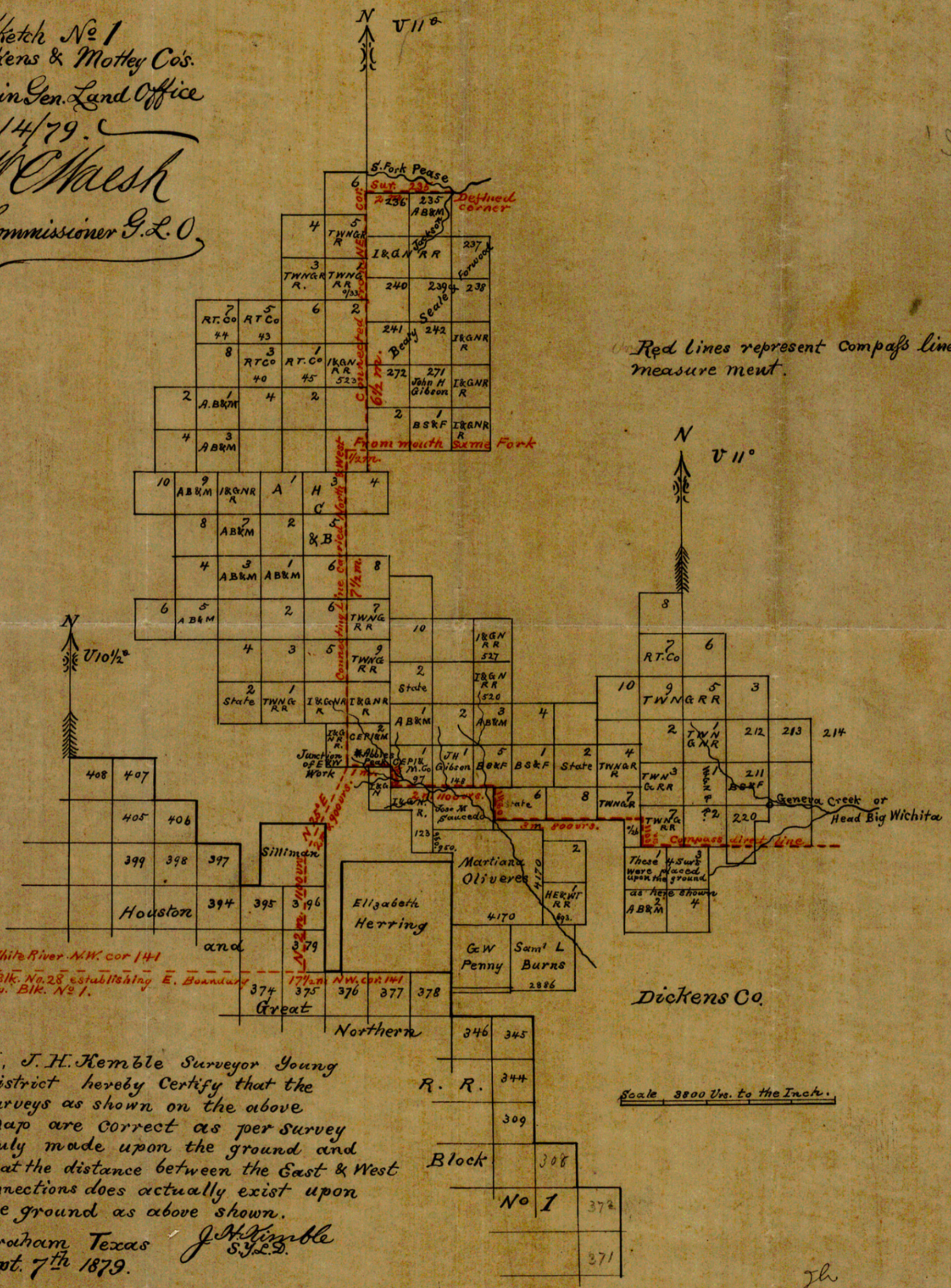


Sketch No 1
 Dickens & Motley Co's.
 Filed in Gen. Land Office
 Nov. 14/79.

McMaish
 Commissioner G.L.O.

Sketch File # 1
 No. 28
 2
 11/19/79
 11/19/79



Red lines represent compass lines & measurement.

Scale 3800 Yds. to the Inch.

I, J. H. Kemble Surveyor Young
 District hereby Certify that the
 surveys as shown on the above
 map are correct as per survey
 duly made upon the ground and
 that the distance between the East & West
 connections does actually exist upon
 the ground as above shown.
 Graham Texas
 Sept. 7th 1879. *J. H. Kemble*
 S. L. O.

SKETCH FILE NO. 1
 COUNTY Dickens

COMPTON # 11312

jh