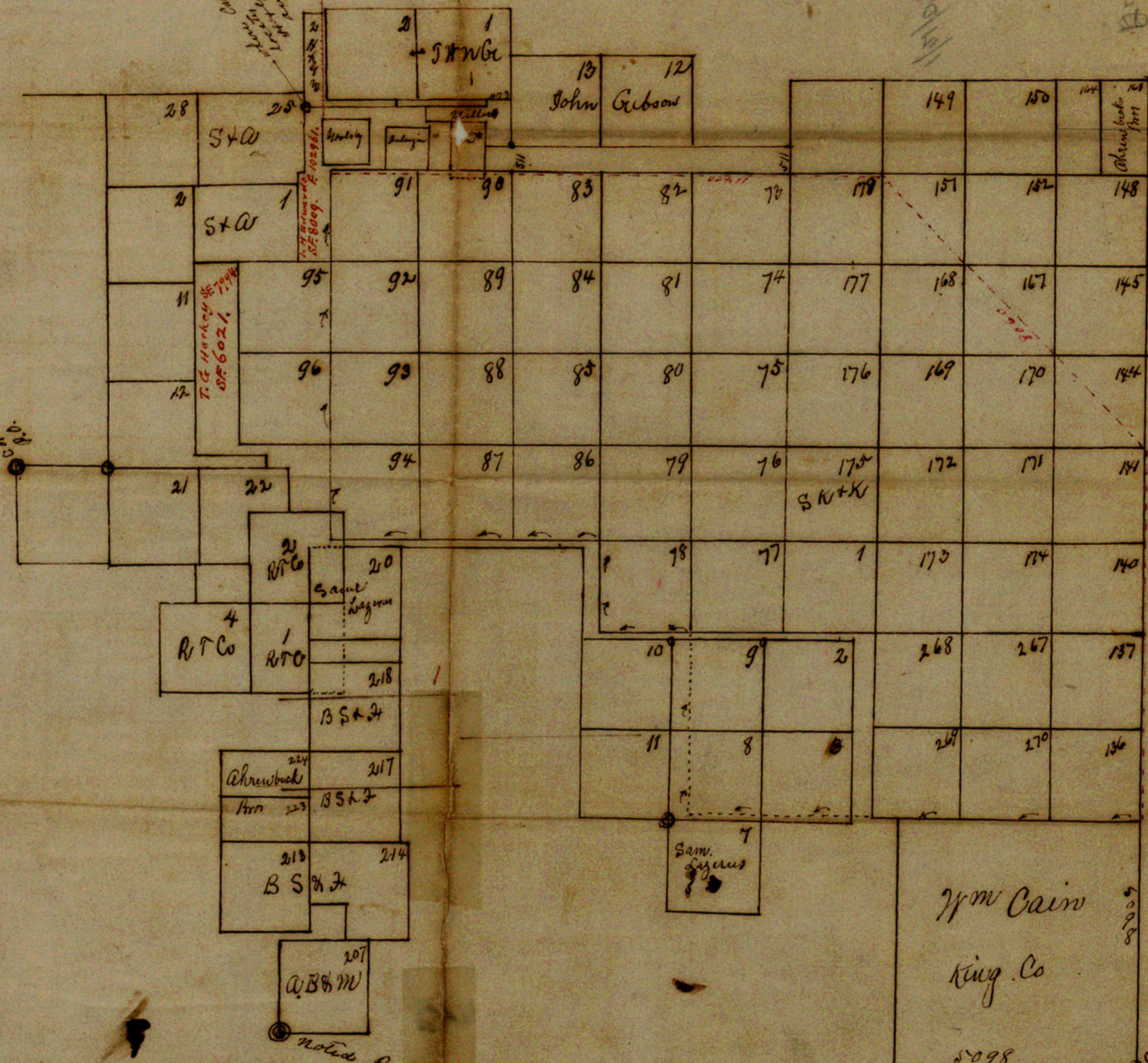


Year 1882...
S...
W...
E...
N...

Sec. 28, T. 2 S., R. 28 W.



SECTION 28, T. 2 S., R. 28 W.
S. 28

on this to long

Filed: Jan. 21 1907.

John J. Ferrell
Commissioner

SKETCH FILE NO. 14
COUNTY Dickens

COUNTER # 11350