

D-572
1361

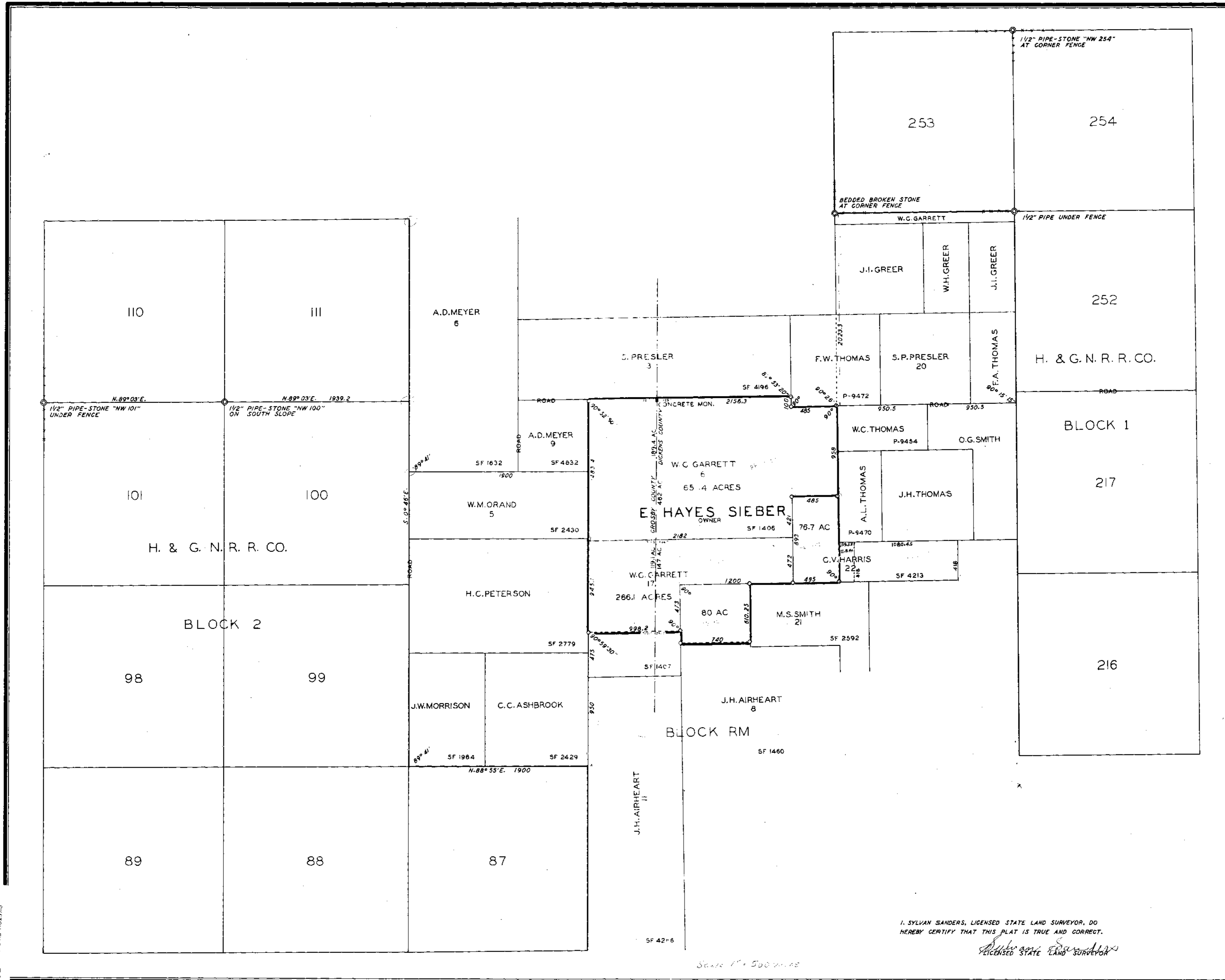
SYLVAN SANDERS
STATE LAND SURVEYOR
100 Avenue 37
LUBBOCK, TEXAS

Hon. Bascom Giles
Land Commissioner
Austin, Texas.
Nov. 13-1943

Dear Sir:-
Replying to your letter of Oct. 19th regarding construction of survey made by me of the H. Hayes Sieber lands in Dickens County, and Crosby County.

All these tracts were constructed from Mr. Geo. Williams' location of Blocks 1 on the east and Block 2 on the west H & G N R R Co. surveys. There is a graded road along west line Sections 216, 217 and 252, Block 1; and all corners destroyed. There is a graded road along east line Sections 100 and 111, Block 2; and all corners destroyed. I made a diligent search for the Williams' corners at NE and NW corner Section 87, Block 2. So I was forced to back out in open pastures to find his corners. All this land between Block 1 and 2 is covered with deep blow sand and shinary; we traveled over it in Farmall tractor. Along the north line of Survey 6 there is a country lane, I accepted the center as the division line; along west line of 6 and east line of 6 there is a high built up shinary covered sand ridge; the same along south line C.V. Harris No. 22 and west line K.S. Smith no. 21 showing old lines of occupation. The west line of Garrett surveys was placed parallel with Williams east line Block 2, H & G N R R Co. as constructed from corners at NE and NW corner Section 101 as described in Mr. Williams' field notes.

Respectfully,
Sylvan Sanders



I, SYLVAN SANDERS, LICENSED STATE LAND SURVEYOR, DO
HEREBY CERTIFY THAT THIS PLAT IS TRUE AND CORRECT.
Sylvan Sanders
LICENSED STATE LAND SURVEYOR

Scale 1" = 500 feet