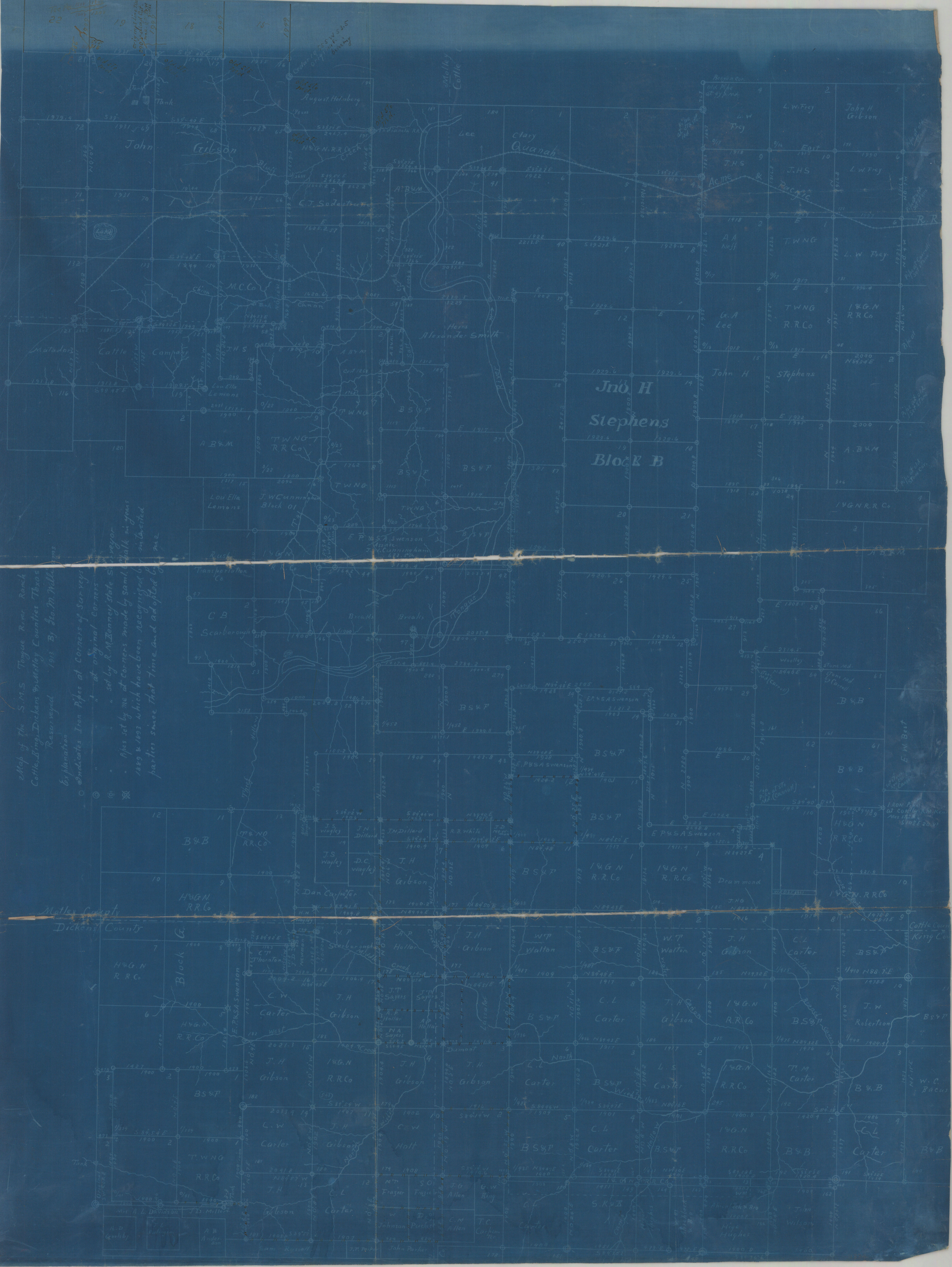


Map of the S.M.S. Togue River Ranch
 Cottle, Bixby, Dickens & Matlock Counties, Texas
 Resurveyed 1913 by Geo. M. Williams
 Explanation
 ○ Indicates Iron Pipes at Corners of Surveys
 ⊙ at original corners
 a set by R.M. Benny state Surveyor
 Pipes set by me at corners made by same or by others
 1889 & 1893 which have been recognized by interested
 parties since that time and adopted by me.



**John H
 Stephens
 Block B**

Matlock County

Dickens County

Cottle County

Tank

John H. Stephens

John H. Stephens

John H. Stephens

Dickens Co. SK. File # G-W-1

Dickens Co. SK. File # ?

DICKENS CO.
Sketch File "G-W" 38

Resurvey of "S.M.S." Ranch,
in Dickens King & Mollay Cos.
by G.M. Williams

- 1911 -