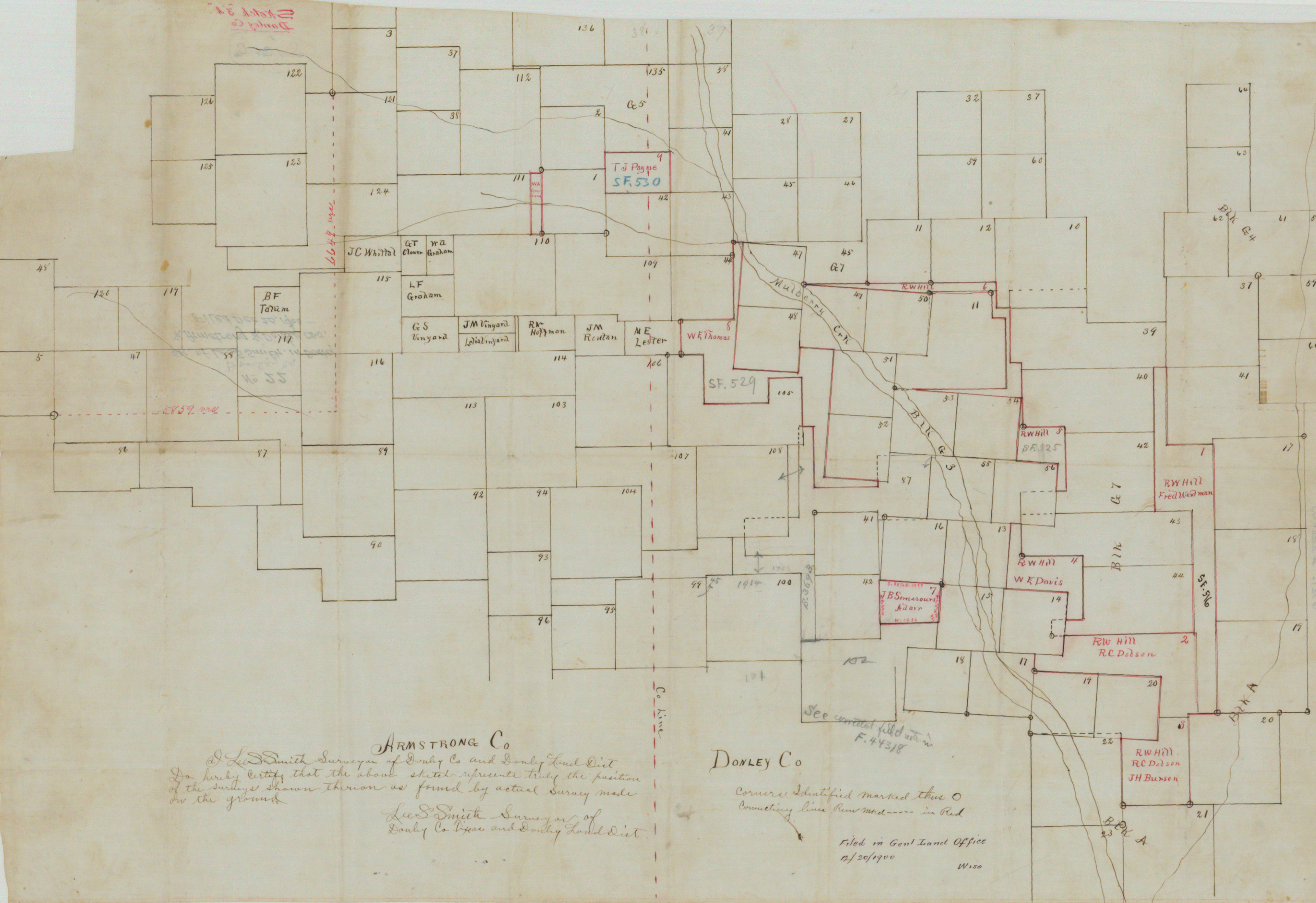


Donley Co
Book 31



ARMSTRONG Co
I, Lee S. Smith, Surveyor of Donley Co and Donley Land Dist
Do hereby certify that the above sketch represents truly the position
of the surveys shown thereon as found by actual survey made
on the ground.
Lee S. Smith, Surveyor of
Donley Co Texas and Donley Land Dist.

DONLEY Co
Corners Identified marked thus O
Connecting line Rem. med. --- in Red
Filed in Genl Land Office
12/20/1900
Wiso