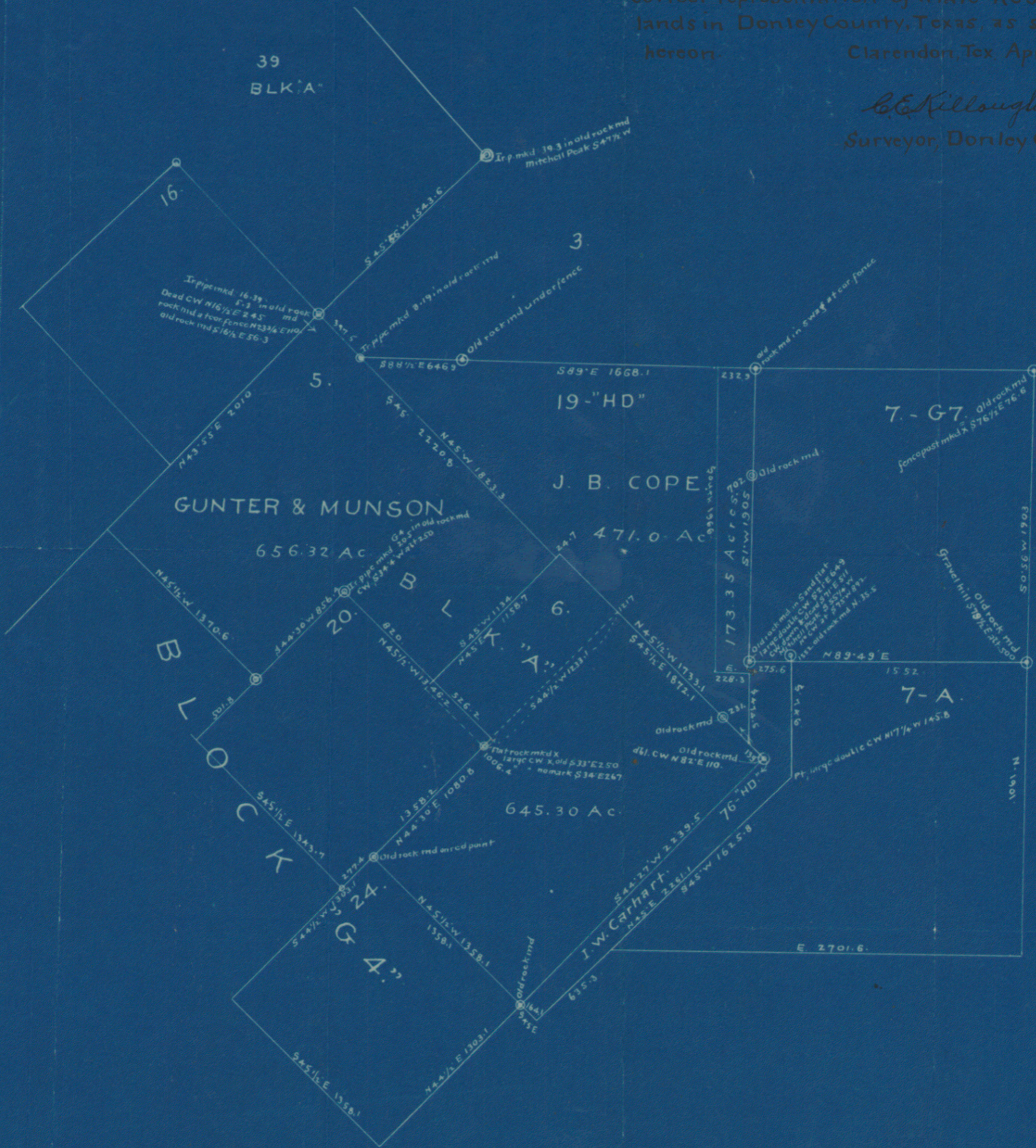


I, C. E. Killough, Surveyor of Donley County,  
do hereby certify that this is a true and  
correct representation of a late Re survey of  
lands in Donley County, Texas, as shown  
hereon.

Clarendon, Tex. April 28<sup>th</sup> 1919.

C. E. Killough,  
Surveyor, Donley Co. Tex.



SKETCH FILE NO. B6  
COUNTY DONLEY