

SKETCH  
OF THE  
N.W PART OF DUVAL COUNTY  
TAKEN FROM XEN & MAP

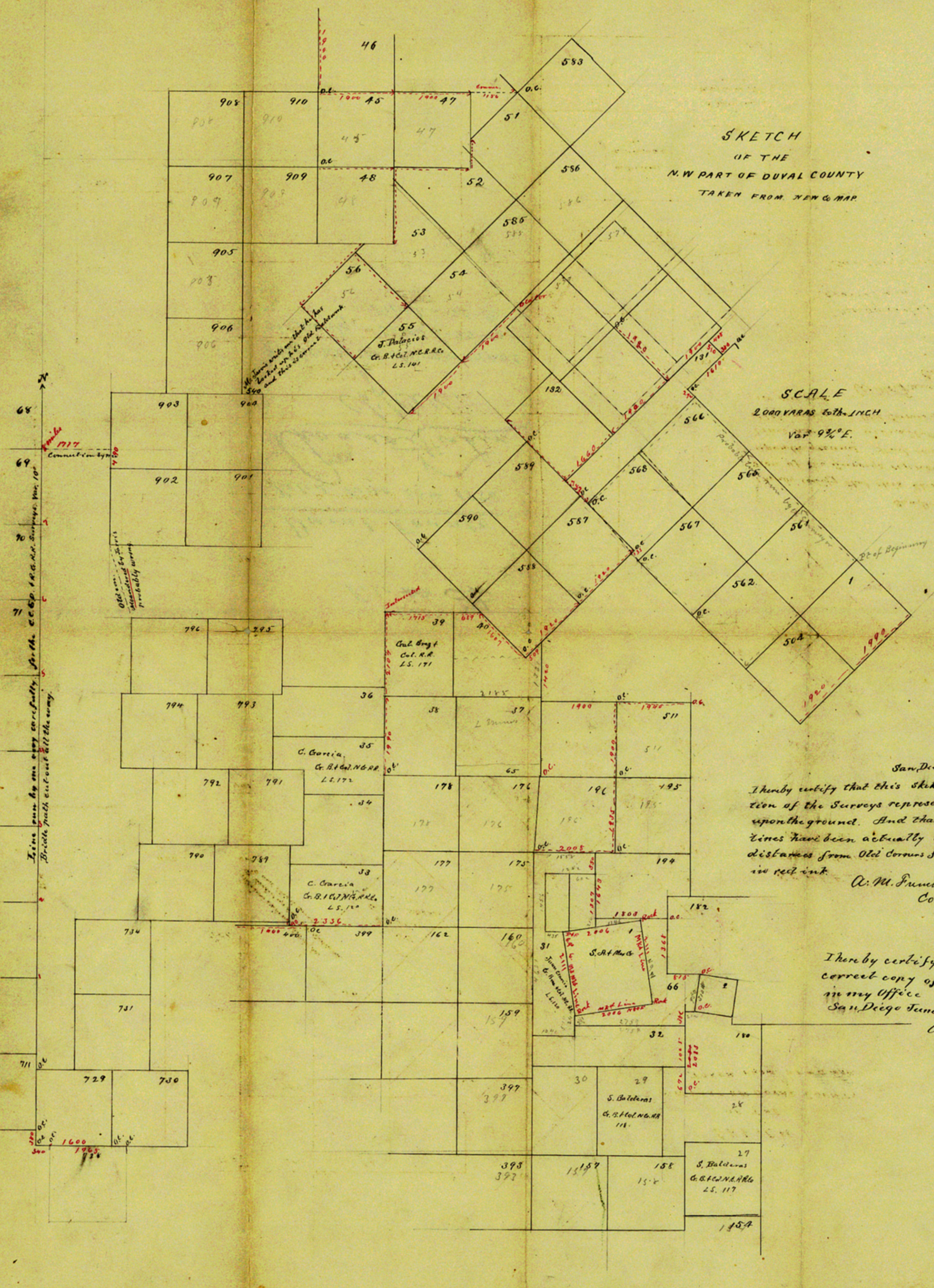
SCALE  
2000 VARAS to the INCH  
Var 9 3/4° E.

San Diego, Tex June 22, 1850  
I hereby certify that this sketch is a correct delineation of the Surveys represented as they are upon the ground. And that the dotted red lines have been actually run, and the distances from Old Corners found as figured in red ink.

A. M. Funch  
Co. Surveyor  
Duval Co.

I hereby certify that this is a correct copy of Sketches on Record in my Office  
San Diego June 22, 1850

A. M. Funch  
Co Surveyor.



68  
69  
70  
71  
 I have run by me every carefully for the C.C. & P. 1840. N.C. Survey. No. 100  
 Dotted path cut out with the survey.  
 Old survey distinguished by points probably wrong

J. Palacios  
 Co. B. & Col. N.C.R.R.  
 L.S. 101

Gal. Gray  
 Co. N.C.R.  
 L.S. 171

C. Garcia  
 Co. B. & Col. N.C.R.R.  
 L.S. 172

C. Garcia  
 Co. B. & Col. N.C.R.R.  
 L.S. 170

S. Balderas  
 Co. B. & Col. N.C.R.R.  
 L.S. 118

S. Balderas  
 Co. B. & Col. N.C.R.R.  
 L.S. 117

X