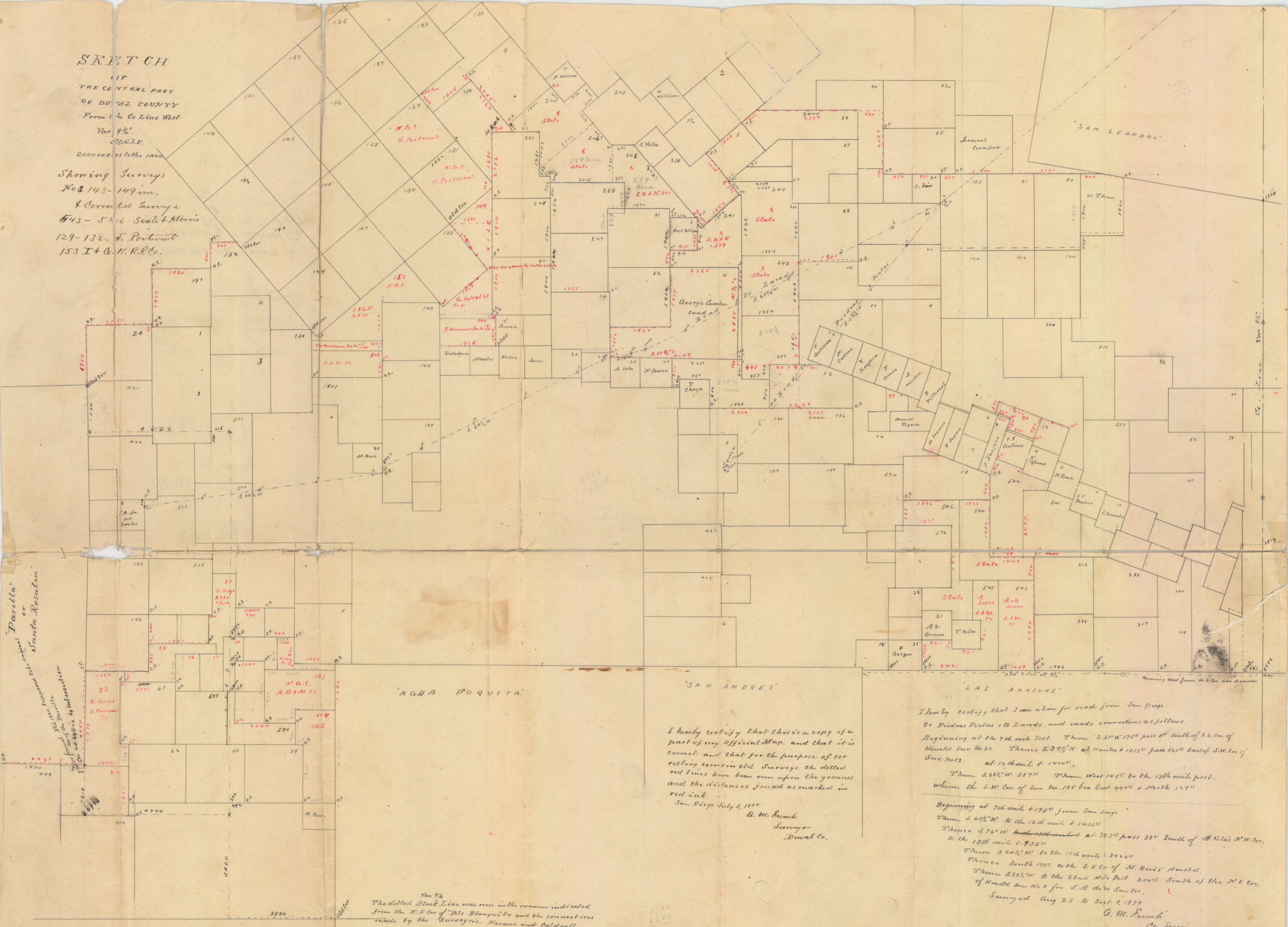


SKETCH

OF THE CENTRAL PART OF DUALZ COUNTY From the Co Line West

Year 9th. SCALE 2000 VARS TO THE INCH

Showing Surveys Nos. 143-149 in. & Corrected Surveys 543-546 Seal & Morris 129-132 J. Postrent 153 I & G. N. R.R. Co.



"Parilla" or "Santa Rosalia" survey from the Parilla survey for the R.R. Co. by intersection.

"AGUA ROQUITA"

"SAN ANDRES"

"LAS ANACUAS"

"PABLO BLANQUITO"

Year 9th
The dotted Black Line was run in the manner indicated from the N.E. Cor. of Palo Blanco to and the connections made by the Surveyors Navarro and Caldwell, appointed by the U.S. Dist Court at Galveston to make a survey of the "Sta Rosalia". They ran according to the old connection and then connected with the old corner on the ground. Feb. 1850 They found no signs of corner or line by the connections given in the Patent of "Sta Rosalia"

I hereby certify that this is a copy of a part of my Official Map, and that it is correct, and that for the purpose of correcting errors in old Surveys, the dotted red lines have been run upon the ground and the distances found as marked in red ink.
San Diego July 3, 1880

A. M. Bunch
Surveyor
Dualz Co.

I hereby certify that I ran a line for road from San Diego to Piedras Pintas & Laredo, and made connections as follows:
Beginning at the 7th mile Post Thence S. 51° W. 175° pass 8th South of S.E. Cor. of Homsted Sur No. 20 Thence S. 37° W. at 11 miles + 1213° pass 12th East of S.W. Cor. of Sec. No. 12. at 12 miles + 1400°

Thence S. 28 1/2° W. 357° Thence West 143° to the 13th mile post. Whence the S.W. Cor. of San No. 185 lies East 447° + North 129°

Beginning at 7th mile + 195° from San Diego.
Thence S. 63 1/2° W. to the 12th mile + 1433°
Thence S. 76° W. to the 11th mile at 723° pass 38th South of I. Vela's N.M. Cor. to the 13th mile + 936°
Thence S. 66 1/2° W. to the 17th mile + 3422°
Thence South 175° to the S.E. Cor. of M. Ruiz's Homsted.
Thence S. 82 1/2° W. to the 23rd Mile Post. 200° South of the N.E. Cor. of Homsted Sur No. 8 for J. A. de los Santos.
Surveyed Aug 23 to Sept 1, 1879

A. M. Bunch
Co. Surveyor
Dualz Co.

File ~~37~~ #21

Duval County

Sketch-map

file July 14, 80
Rhoads Fisher
Clyde Clerk

AM French's SR. of Surs. in
Central part of Duval Co.
dated 8-23-79 to 9-1-79
Filed July 14, 1880.

#2

Explanation

Hon W. C. Walsh.

Dear Sir

I think this Sketch will enable you to correct your map so that those Surveys which have been hanging fire so long can now be patented, viz.

I. & C. N. R. R. Co. No. 153. N. O. Collins

J. Pochevent. No. 129 + 131 " "

" " " 23 L. Cranza

B. S. E. " " 25 " "

The numbering of these last has been changed as represented on the Sketch.

Please inform W. Von Rosenberg when these are ready for patenting.

Seale & Morris 71 + 72 Sur. 543 + 545. for A. Lopez. I trust will also be found correct. I do not think it right that the numbers on these should be changed as they were not formerly objected to on account of that, and Lopez now has improvements on them.

Please give notice to Dix & French when they are ready for patenting.

I have been at some pains and expense to get these Surveys into their true position. I am working on a new map for the Co. by order of the Commission and am anxious to have it correct.

You will notice that the whole trouble was caused by errors in the Surveys Nos 240 - 246 made for J. J. Dix. Now I wish to change them

and make them over in the manner indicated on the Plat. Dix will surrender his patents for correction if they can be changed in that manner.

I put No. 241 into the shape represented to get the States 240 + 242 into better shape, and if these Surveys can be made in this manner, let me know, and I will make the Surveys and send up the patents for correction, or cancellation and reissue as the case may demand. Nos.

245. + 246 will only contain 559 Acres each. I have made the corrections in the way that seemed best to me, and call for the least changes

I send you connections made by different Surveys, they agree very closely, as near as can be expected for land Surveys.

W. M. Punch

Surveyor.

Duval Co.

#