

San Diego, Brea June 19, 1880

Hon W. C. Walsh Commr.

Dear Sir,

In explanation of this error found by me in our Co. represented on the accompanying Sketch, I have this to say.

C. H. Blucher, in making the block of Surveys beginning with Sur. No. 491, commenced as he supposed at the East Cor. of Homestead Survey for Casimiro Alanis; but the man who showed him the Cor. took him instead to the East Cor. of an old abandoned Survey made for Antonio Alanis, and that threw all his work 950° S. E. and 700° N. E. and as he never ran to any other old Cor. but only called for them when he supposed he was opposite he did not discover his error.

Surveys 500 and 502 were changed in the Office by Caldwell, and not put at all as they were surveyed upon the ground.

I have changed upon the ground Sur. No. 499 or rather have placed Corners, and if you will allow it I will send up Corrected Fieldnotes and the old Patent for Correction. As it is now it being in conflict with No. 490

Survey No 500 is also largely in conflict with Nos 489 & 490 and I have put corners for it as indicated in its present position upon the map, and also Sur. No. 502

If I be allowed to correct these in this way let me know and I will record & send up the Fieldnotes of 499, 500, 502

You will also observe that I find a large excess in running the North line of Sur. Nos. 508 & 512. I cannot account for this and can only say it is so.

Now shall I move the ^{North} South line of No 506 South to cut down the quantity and make a new survey, and then treat No. 508 in the same manner, or leave them as they are with an excess?

The balance of the vacant land is entered and I am at a loss to make the Survey.

Survey No 115 for George Alanis I must request that you do not change the numbering, though it does not strictly alternate with the old Surveys, though it does with the new ones. He purchased No. 495 and supposing the survey had been correctly made, improved upon it in good faith, and now if this is given to the State it will take all his improvements, and although the Pat of Sur. No. 495 calls for the Course of his Homestead. I have thought it best to start from the East Cor. that all three Surveys might be right in respect to themselves. I can send up his Pat. for correction if you think best. I this certificate will also enable you to Pat. Cal. Brea & Cal. L. S. No. 171 for Von Rosenberg.

Respectfully

A. M. French,
Co. Surveyor Deuel Co.

as document

Please let me know about this

V

SKETCH

of a portion of the
N.W. PART OF
DUVAL COUNTY.

Scale
2000 VARAS TO THE INCH.
Var. 9 3/4"

Showing Surveys
from

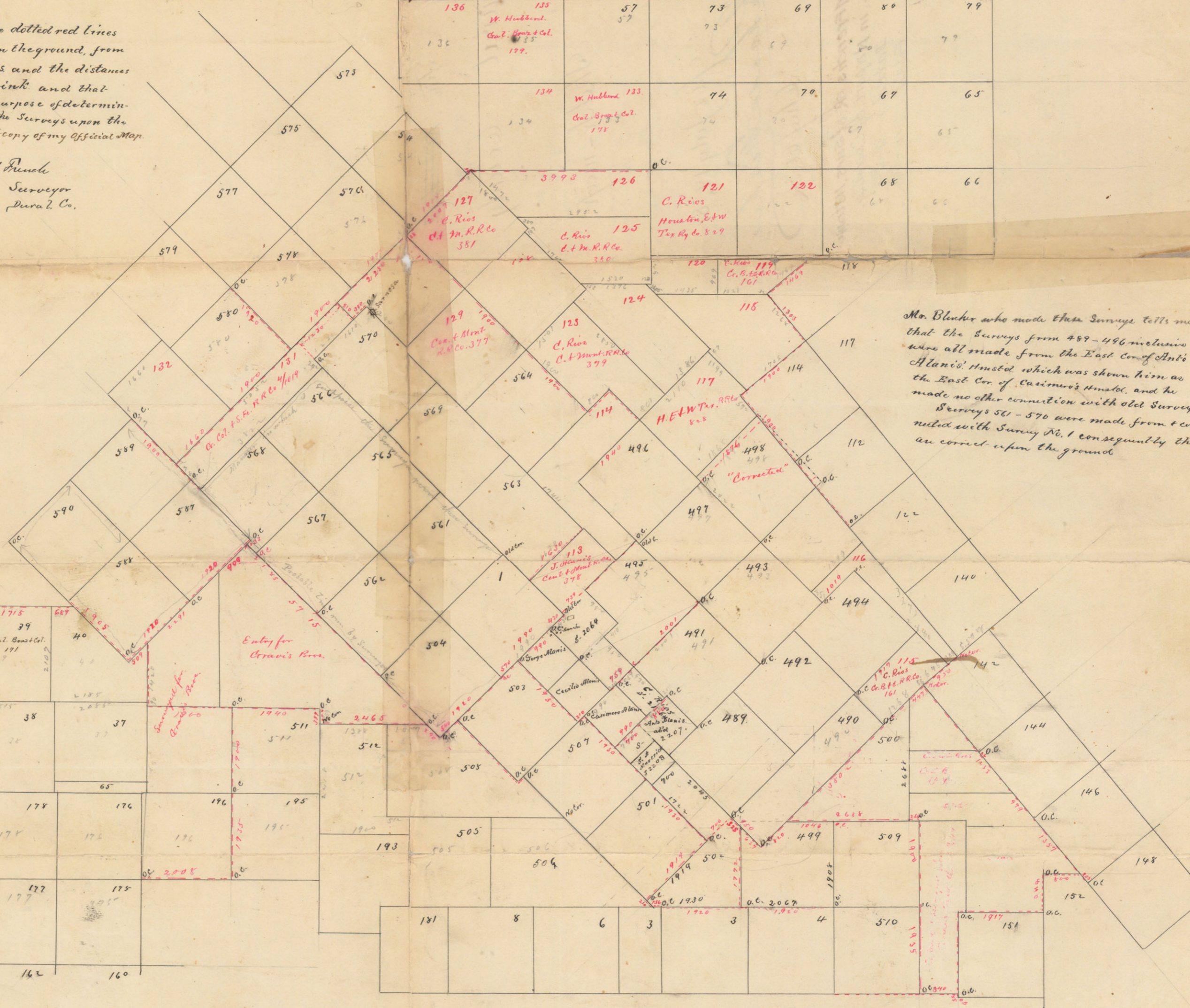
No. 113 - 140 inclusive

Surveyed Dec. 1879
and
May 1880

I hereby certify that the dotted red lines
have actually been run upon the ground, from
old and recognized corners and the distances
found as marked in red ink and that
these lines were run for the purpose of determining
the actual position of the surveys upon the
ground, and that it is a correct copy of my official map.
San Diego June 19, 1880

O. W. French
Co. Surveyor
Duval Co.

Corrected
Field notes for Sur. No. 499
Begin at N.E. Cor. Sur. No. 4
West 2067 North 1772
S. 45° E. 627 N. 45° W. 820
East 1048 South 1208
Sur. No. 500
Begin at S.E. Cor. 499
East 2067 North 2084
S. 45° W. 3802
Sur. No. 502
Begin at S.E. Cor. 499
West 1930 N. 45° W. 210
N. 45° E. 1913 N. 45° W. 1722
S. 45° E. 700 S. 45° W. 2045
South 1772



Mr. Blucher who made these surveys tells me
that the surveys from 489-496 inclusive
were all made from the East Cor. of Anti
Atlas' Hotel, which was shown him as
the East Cor. of Casimiro's Hotel, and he
made no other connection with old surveys.
Surveys 501-570 were made from & con-
nected with Survey No. 1 consequently they
are correct upon the ground

File ~~No 40~~

22

Dival County

Sketch-map

Filed July 14, 80

Rhoads Fisher
Chief Clerk

AM French's sk. of Surs. 113 to 144
inc. in Hwppt. of County.

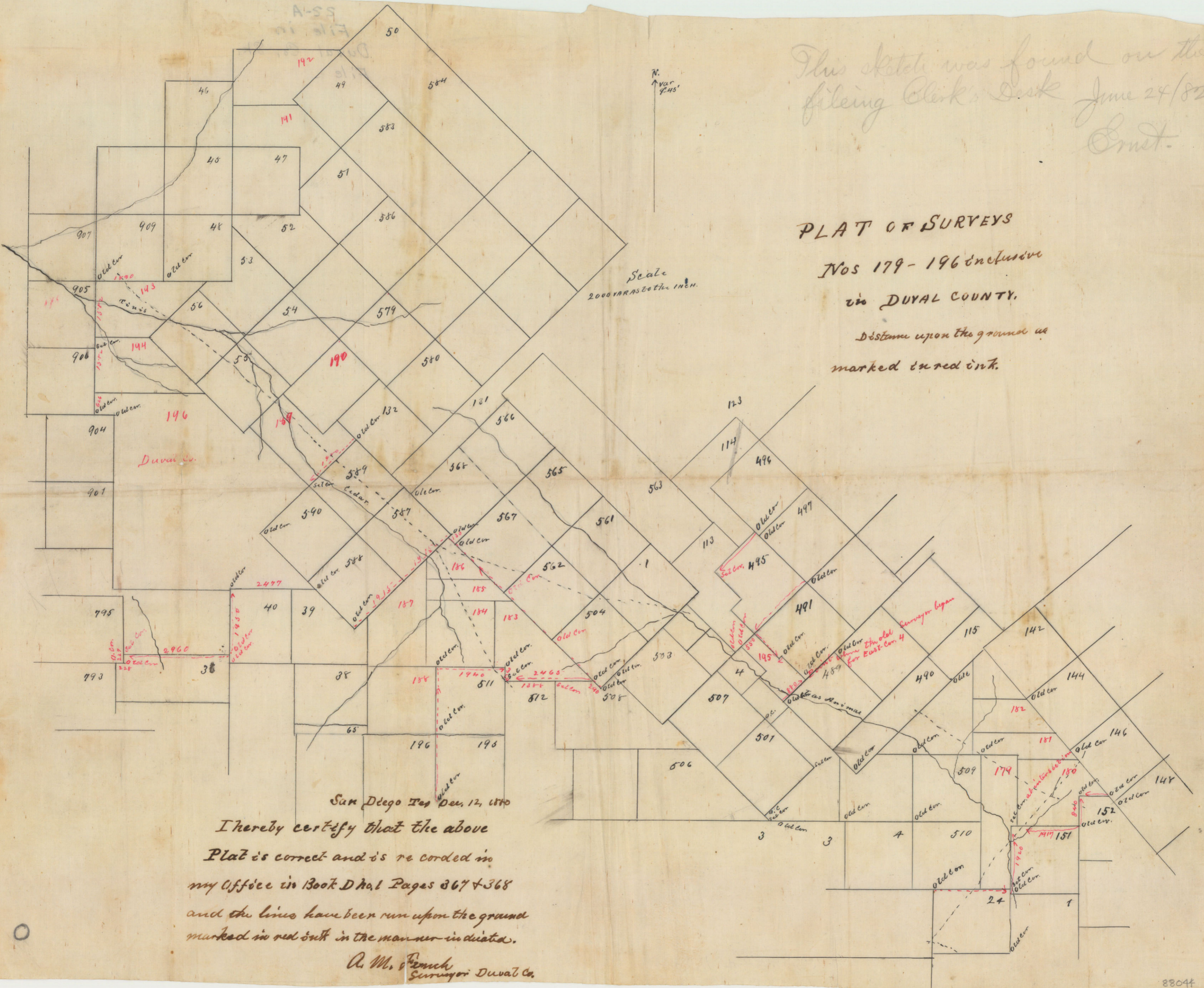
Dated 6-19-80

Filed 7-14-80

V²

This sketch was found on the
 filing Clerk's Desk June 24/82
 Ernst.

PLAT OF SURVEYS
 Nos 179-196 inclusive
 in DUVAL COUNTY,
 Distance upon the ground as
 marked in red ink.



San Diego Tex Dec. 12, 1870

I hereby certify that the above
 Plat is correct and is recorded in
 my Office in Book D hal Pages 367 & 368
 and the lines have been run upon the ground
 marked in red ink in the manner indicated.

A. M. French
 Surveyor Duval Co.