

STATE OF TEXAS
DUVAL COUNTY

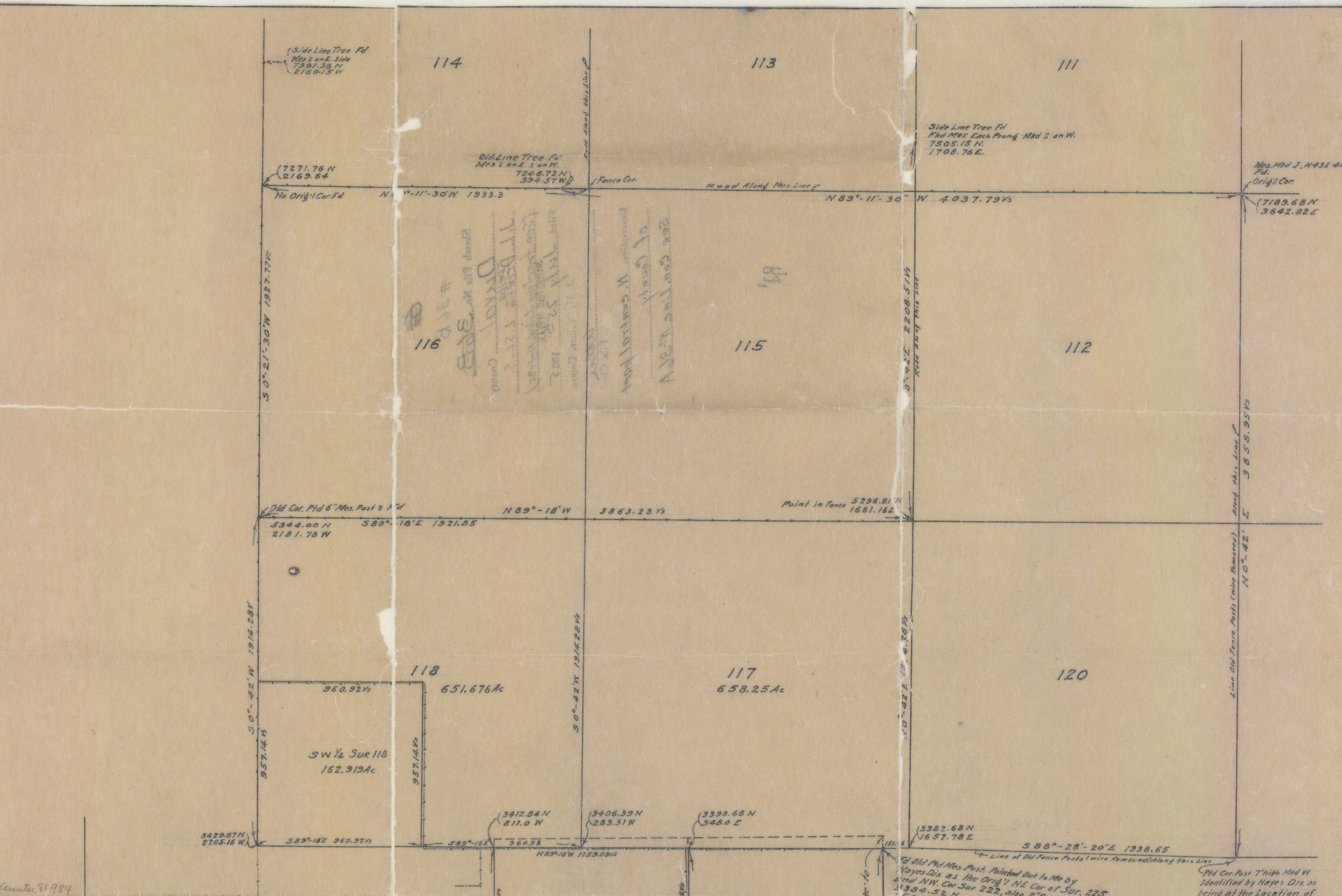
I, J. L. Dellis, a Licensed Land Surveyor of the State of Texas do hereby certify that the Adjoined Map is a true and correct Map of a Survey made on the ground by me on the dates shown showing the Location of the Corners, and lines just as I found them on the ground.
This the 23 day of July 1935.

J. L. Dellis
Licensed Land Surveyor

MAP
SHOWING
THE NE 1/4 of SUR. N° 226
G.B. & C. N.G.R.R. Co.
CERT. N° 175
AND ADJACENT SURVEYS
DUVAL COUNTY, TEXAS
SURVEYED, June 29- July 12, 1935
By J. L. Dellis, Licensed Land Surveyor
San Diego, Texas
Scale: 1" = 400 ft
Variation: N 10° 14' E

Mes G. N 565 47 1/2 Ft
5 1/2" Plat Mes Post Mid=
Original SE Cor. Sur 385

DUVAL 36B



Side Line Tree Fd
Mes E on E. Side
7397.38 N
2160.5 W

114

113

111

7271.76 N
2169.64

Old Line Tree Fd
Mes E on E. on W.
7246.72 N
394.57 W

Side Line Tree Fd
Fkd Mes Each Prong Mhd E on W.
7505.15 N.
1708.76 E.

Mes. Mhd J, N 43 E 4 V
Fd.
Orig'l Cor.

No Orig'l Cor. Fd
N 89°-11'-30" W 1933.3

Road Along This Line of
N 89°-11'-30" W 4037.79 V

7189.68 N
3642.82 E

S 0°-21'-30" W 1927.77 V

116

11 Bells 1212
Dix's Corn
Sketch file No. 3018

115

See Cor. Map N 33 E of Corn
Mhd W. Center of Post

S 0°-42' E 2208.51 V

112

Old Cor. Ptd 6" Mes. Post E Fd

N 89°-18' W 3863.23 V

Point in Fence 5296.81 N
1681.16 E

5344.00 N
2181.78 W

S 89°-18' E 1921.85

S 0°-42' W 1914.28 V

118

651.676 Ac

117

658.25 Ac

120

SW 1/4 Sur 118
162.919 Ac

3429.87 N
2205.16 W

S 89°-18' E 960.92 V

3412.84 N
811.0 W

S 89°-18' E 960.93

3406.39 N
283.31 W

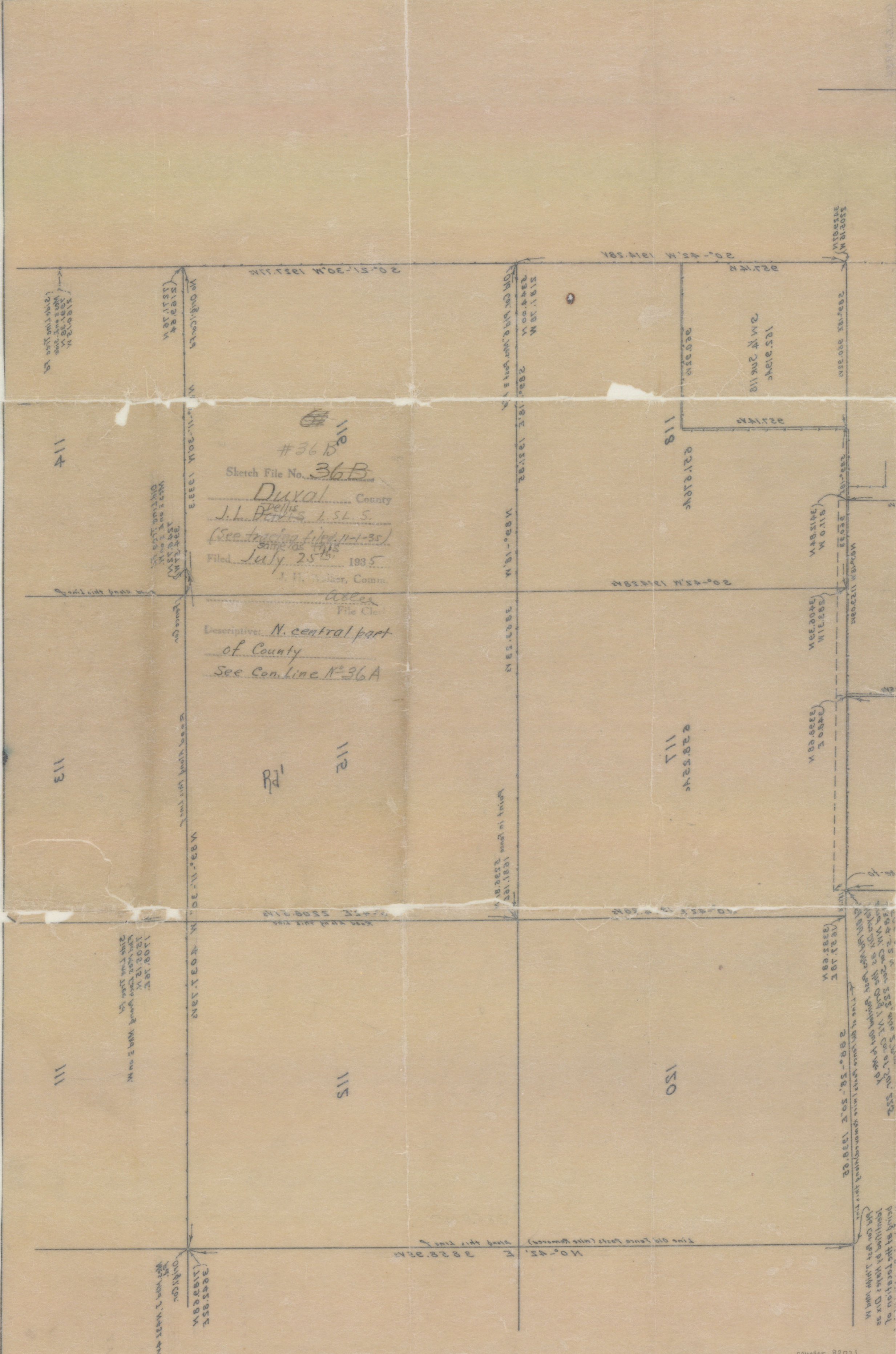
3398.68 N
348.0 E

3382.68 N
1657.78 E

S 88°-28'-20" E 1938.65

Old Ptd Mes. Post. Pointed out to me by
Hayes Dix as the Orig'l NE Cor of Sur. 225
and NW. Cor Sur 222, also 2" Ptd

Ptd Cor. Post 7' high Mhd W
Identified by Hayes Dix as
being at the Location of



Sketch File No. **36B**
 Duxal County
 J. L. DeWitt's L.S.L.S.
 (See tracing filed 11-1-35)
 Filed July 25th 1935
 J. H. [unclear], Comm.
 [unclear] File Clerk

Descriptive: *N. central part*
of County
 See Con. Line N^o 36A

112
 Rd¹

being at the location of
 [unclear] on [unclear] Dix 52
 [unclear] [unclear] [unclear]