

D-969

Ed. Houlihan Report

STATE OF TEXAS)

COUNTY OF DUVAL)

I, W. S. Embry, a licensed State Land Surveyor, do hereby certify that this report is to accompany a plat showing a Survey of J. Poitevent Survey #32, Abst #1919, and S. B. Ingram Survey #34, Abst #1917, Situated 22 miles N.W. of San Diego, Duval Co. Texas.

I am enclosing a field note description along with a print of a plat of the Delamer Ranch made by H. G. Onken in 1926, so that it might be of some aid in arriving at our construction of the placing of corners of the above surveys. Begin at an old mesquite post, knocked down and blazed, position checks original mesquite tree mkd, "G" which bears N-13°W, 42 varas, this was found by H. G. Onken in 1926 and identified as original south corner of Survey #33, and West corner of Survey #34, thence east along South Line of Survey #34, found remains of old mesq. S-53° E, 7.0 varas, thence North at 624.96 varas old corner post and fence corner, at 1828.12 varas following very old line of posts, found old corner post, existing in H. G. Onkens 1926, Survey, thence continuing N-W, with old line of posts, 722.16 varas found mesquite plug set by H.G. Onken in 1926, as the east corner of Survey #31, we set 6" pointed post for the North Corner of 34, by using a continuation of a line from 6" ptd.post to original "G" tree N.E., to the North Corner of Survey #80, at this point Mr H. G. Onken identified and found original tree mkd "A", N. 64°-E, 14 varas, in 1926 Survey, as being the East Corner of Survey #78, the distance from this point S.E. to the East Corner of Survey 80, Checks with distance given in H.G. Onkens 1926 field note description, there is no evidence of bearing trees as of this date as all has been cabled and bull dozed down.

Using a line from old "G" tree, the West Corner of 34, to old "A" tree the east Corner of Survey #78, was our construction in establishing the S.E. Lines of Survey #32, and Survey #78.

Back to 6" ptd. Mesq. post, the east corner of 31, and the South Corner of 32, we followed line of very old fence posts N.W. at 1082.34 Varas, we set a 5/8" iron rod, being on a S.W. extention of very old line of post (found on the ground), continuing N.W. at 1082.34 varas. We set a 5/8" iron rod, for West Corner of Survey 32, no evidence of any original Corner found, thence N.E. 1719.36 varas set 6" ptd post, in line of old posts (found on ground), for the north Corner of Survey #32, and West Corner Survey #78, thence S.E. Along old line of posts at 1084.32 varas, found old Corner post (base good) from whence old mesq. mkd "B" (in good condition) brs S-60°-42' E. 15.12 varas, We set a 5/8" iron rod in base for the East Corner of Northwest 1/2 of Survey #32. Thence N.E. line of Survey # 78, as we have constructed same, checks with distances given in H. G. Onkens Survey of 1926, and as no corners were found this distance was used in our construction.

This the 21st day of March, 1959.

Respectfully,

W. S. Embry

W. S. Embry
Licensed State Land Surveyor

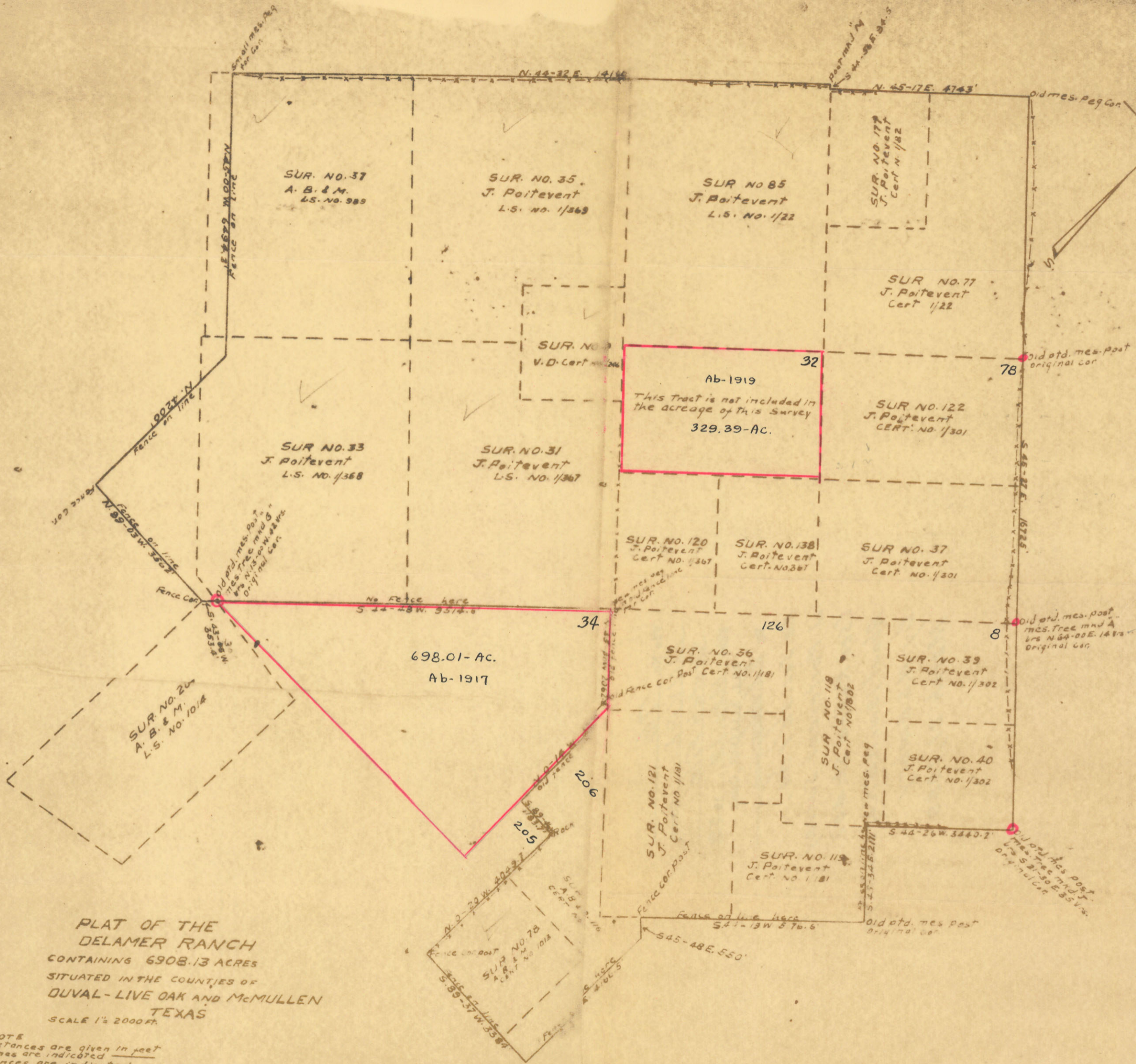
RECEIVED

MAY 12 1959

General Land Office

A

RECEIVED
MAY 12 1959
General Land Office



PLAT OF THE
DELAMER RANCH
CONTAINING 6908.13 ACRES
SITUATED IN THE COUNTIES OF
DUVAL-LIVE OAK AND McMULLEN
TEXAS
SCALE 1" = 2000 FT.

NOTE
Distances are given in feet
Lines are indicated
Fences are indicated
Original survey lines are indicated

I, H.G. Onken, surveyor, do hereby certify that the metes and bounds as indicated on this map were determined by actual survey on the ground.
H.G. Onken

This goes with Q1, 7 and 8 Survey

D. 9. 69

File No. 76
DUYAL County
Sketch File
Filed May 12 19 59
BILL ALLCORN, Com'r
By W.S. Embry

Re. Sec. 32 & 34,
J. Poitevent Survey
(See Rolled Sk. 40)
About 19 mi. N. 15° W. of San Diego
By W.S. Embry
March 21, 1959

4